



Level 11/183 Macquarie Street Sydney NSW

- Stunning commercial suite with exceptional views
- Prestigious, professional and inspired workspace
- Newly renovated with modern and stylish interiors
- Ultra-impressive views overlooking Sydney Harbour
- Views of the Sydney Opera House and Fort Denison
- North east aspect overlooking Botanical Gardens
- Prime corner positioning and excellent natural light
- New carpet, lighting and freshly painted throughout
- Open plan layout plus a separate room for storage
- Reception or utilities desk with custom built joinery
- Internal kitchen facilities with water connectivity
- Impressive commercial building with two elevators
- Prime location near Martin Place and Chifley Tower
- Surrounded by quality restaurants, cafes and bars
- Handy to Wynyard Station and Circular Quay Ferries
- Opposite NSW Parliament House and State Library
- Located among Australia's most prolific businesses

Building Size : 65 sqm
View : <https://www.noonanproperty.com.au/lease/nsw/sydney-city/sydney/commercial/offices/6536409>



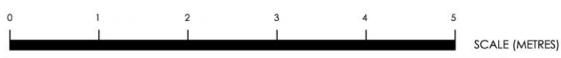
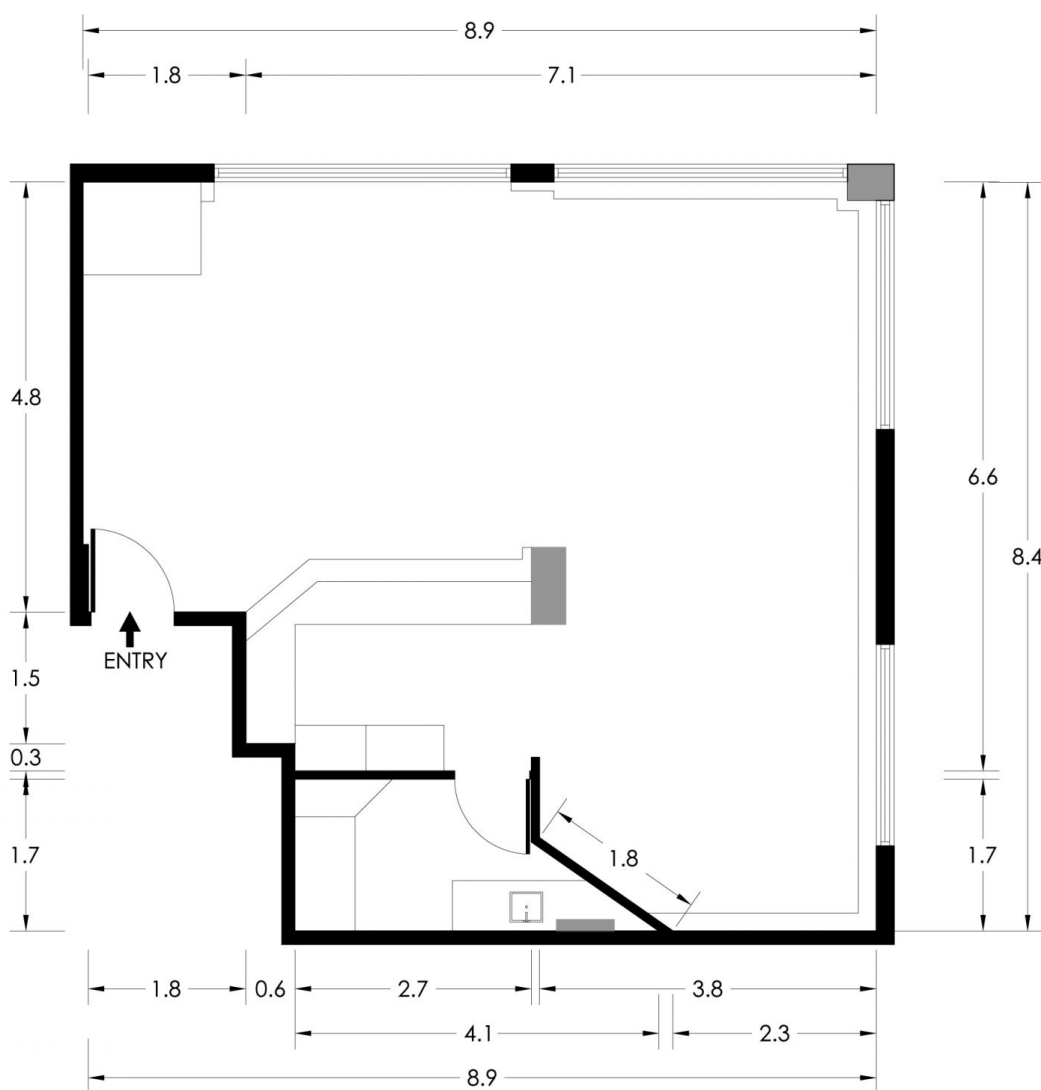
Tim Noonan
02 9231 6000



Ben Kennedy
0449 286 129

SUITE 111

183 MACQUARIE STREET SYDNEY



*PLANS SHOWN ONLY INDICATIVE OF LAYOUT. DIMENSIONS ARE APPROXIMATE.
Floor plan supplied by V-Mark Design Pty Ltd. This floor plan is provided for indicative purposes only.
Measurements are approximate and not to scale. The vendor, agency and supplier will accept no liability
for its accuracy. Interested parties are advised to make their own independent enquiries.

NOONAN
PROPERTY