



201/105 Pitt Street Sydney NSW

- Modern and impressive commercial suite
- Large windows and excellent natural light
- Attractive views overlooking Pitt Street
- High quality and versatile fitout included
- 2 meeting rooms with audio visual display
- Mixture of offices and open workspaces
- Easy access to on-floor kitchen facilities
- High ceilings maximising light and space
- Access to a large rooftop BBQ terrace
- Prominent and stylish commercial building
- Impressive main lobby area with two lifts
- Exceptional CBD location near Martin Place
- Minutes to Circular Quay and Barangaroo
- Adjoining underground access to Wynyard
- Surrounded by Sydney's best restaurants
- Attractive and flexible lease terms available

Building Size : 98 sqm

View : <https://www.noonanproperty.com.au/lease/nsw/sydney-city/sydney/commercial/offices/6579393>

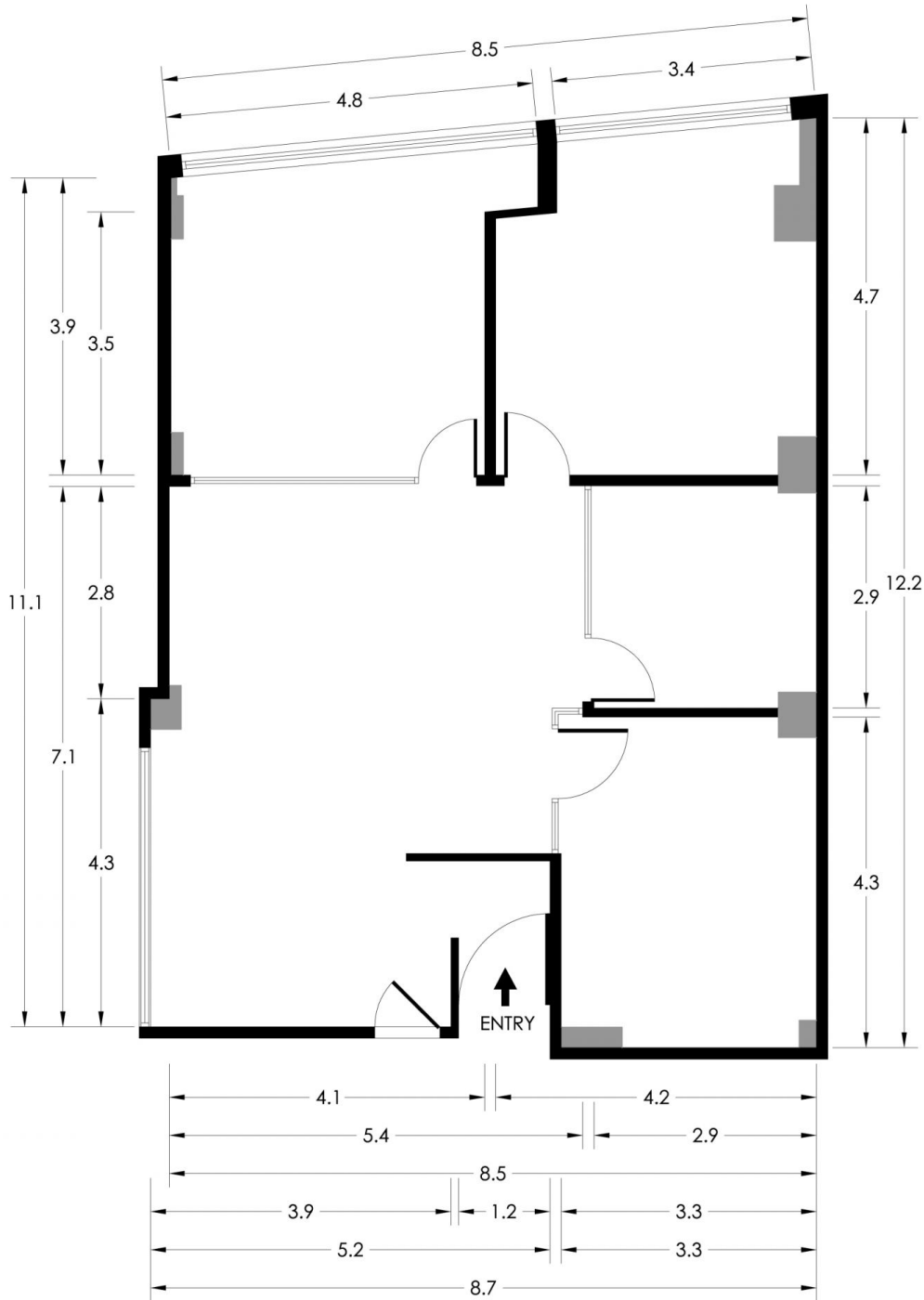


Tim Noonan
02 9231 6000



Ben Kennedy
0449 286 129

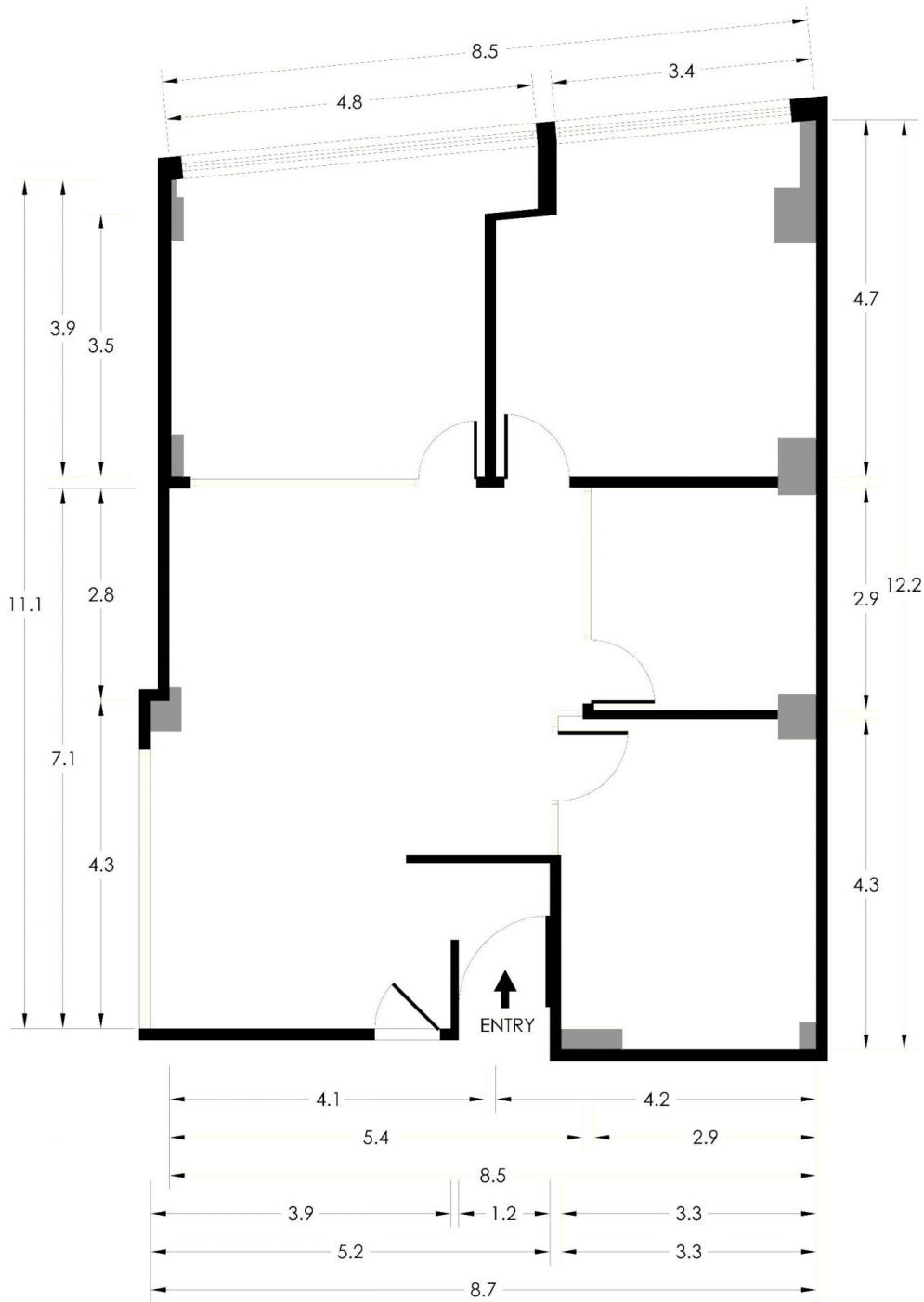
SUITE 201 105 PITT STREET SYDNEY



*PLANS SHOWN ONLY INDICATIVE OF LAYOUT. DIMENSIONS ARE APPROXIMATE.
Floor plan supplied by V-Mark Design Pty Ltd. This floor plan is provided for indicative purposes only. Measurements are approximate and not to scale. The vendor, agency and supplier will accept no liability for its accuracy. Interested parties are advised to make their own independent enquiries.

**NOONAN
PROPERTY**

SUITE 201 105 PITT STREET SYDNEY



*PLANS SHOWN ONLY INDICATIVE OF LAYOUT. DIMENSIONS ARE APPROXIMATE.
Floor plan supplied by V-Mark Design Pty Ltd. This floor plan is provided for indicative purposes only. Measurements are approximate and not to scale. The vendor, agency and supplier will accept no liability for its accuracy. Interested parties are advised to make their own independent enquiries.

**NOONAN
PROPERTY**