

1305/276 Pitt Street Sydney NSW

- Impressive and professional commercial suite
- East facing frontage with top floor positioning
- Large windows providing plenty of natural light
- Attractive views including Hyde Park glimpses
- Well-presented office fitout with high ceilings
- Integrated workstations and storage cabinets
- Excellent security with dual entranceway doors
- Ducted air conditioning and 24hr security access
- Easy access to bathroom and kitchen facilities
- Prestigious commercial building with two lifts
- Newly renovated lobby with high spec finishes
- Prime midtown location near Town Hall Station
- Minutes to World Square, QVB and Hyde Park
- Close to Haymarket, Cockle Bay and Barangaroo

Building Size : 52 sqm

View : <https://www.noonanproperty.com.au/lease/nsw/sydney-city/sydney/commercial/offices/6587814>



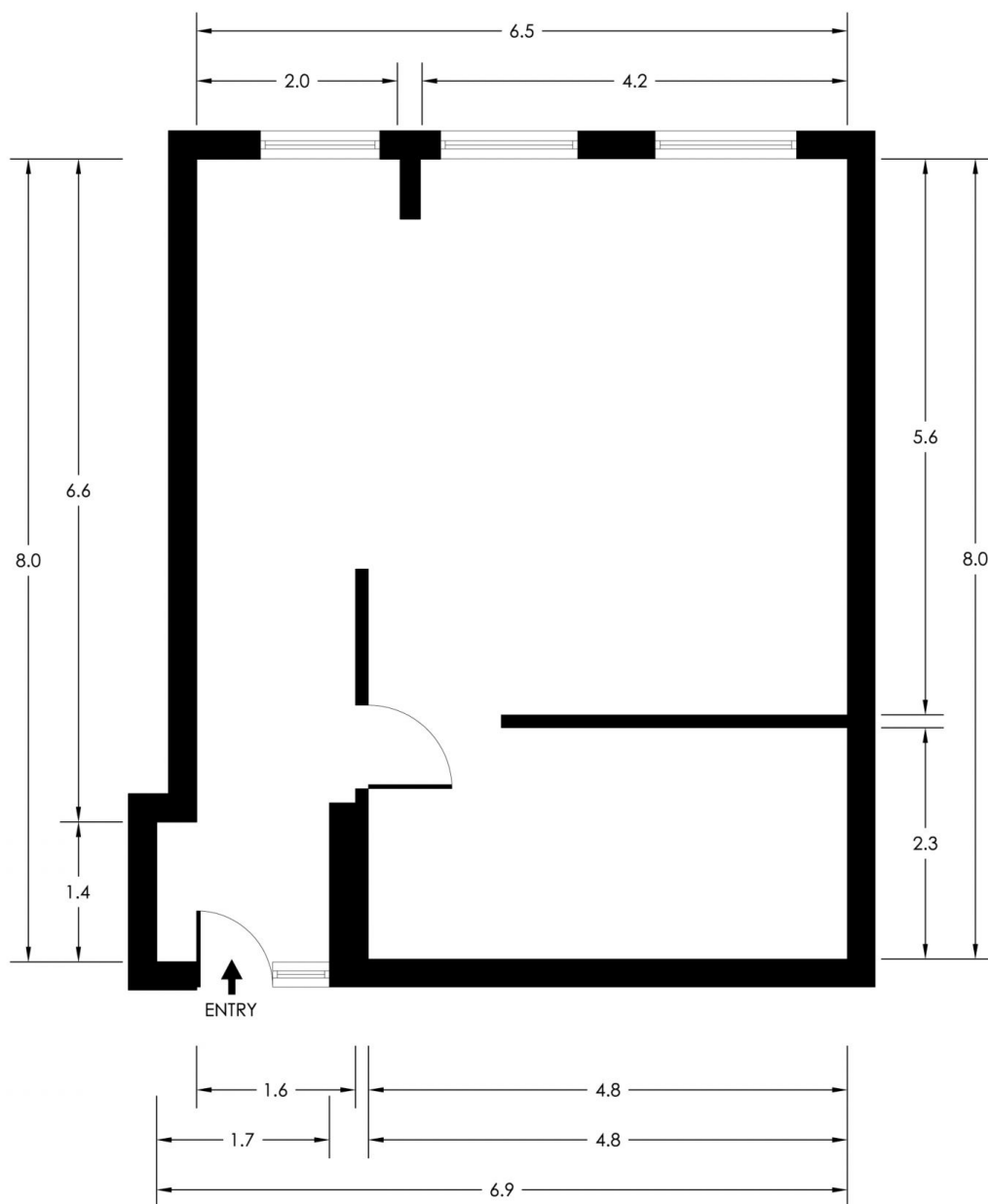
Tim Noonan
02 9231 6000



Ben Kennedy
0449 286 129

Size - 52 sqm approx

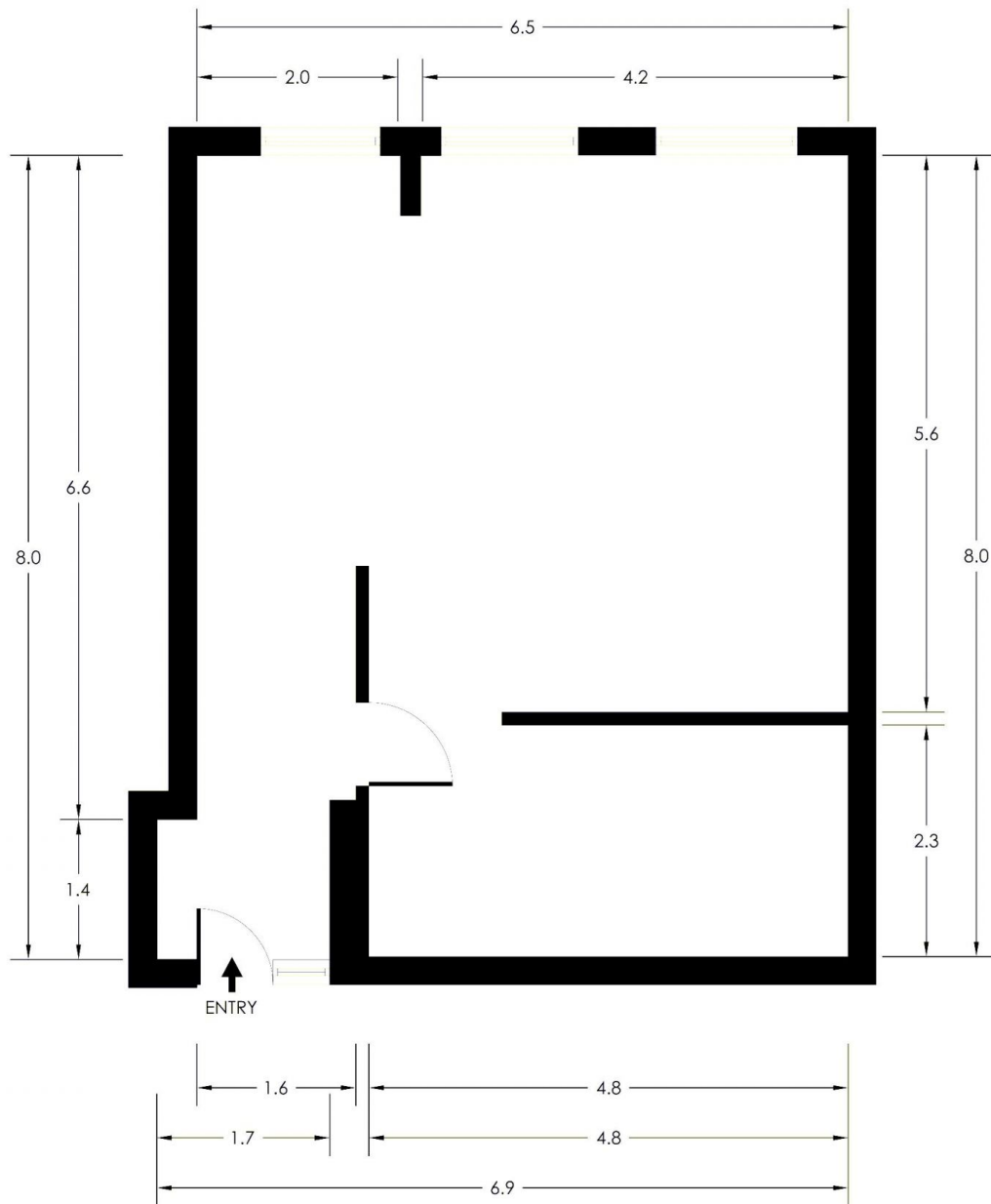
SUITE 1305-276 PITT STREET SYDNEY



*PLANS SHOWN ONLY INDICATIVE OF LAYOUT. DIMENSIONS ARE APPROXIMATE.
Floor plan supplied by V-Mark Design Pty Ltd. This floor plan is provided for indicative purposes only.
Measurements are approximate and not to scale. The vendor, agency and supplier will accept no liability
for its accuracy. Interested parties are advised to make their own independent enquiries.

NOONAN PROPERTY

SUITE 1305-276 PITT STREET SYDNEY



*PLANS SHOWN ONLY INDICATIVE OF LAYOUT. DIMENSIONS ARE APPROXIMATE.
Floor plan supplied by V-Mark Design Pty Ltd. This floor plan is provided for indicative purposes only.
Measurements are approximate and not to scale. The vendor, agency and supplier will accept no liability
for its accuracy. Interested parties are advised to make their own independent enquiries.

NOONAN PROPERTY