



1/44 Bridge Street Sydney NSW

- Boutique office suite in premium location
- Large windows and excellent natural light
- Corner positioning with expansive views
- Modern fitout maximising light and space
- Open plan layout suitable for workstations
- Separate office area or private boardroom
- Internal kitchenette with fridge and storage
- Quality bathroom amenities incl. a shower
- Existing data connections, NBN compatible
- Independently controlled air conditioning
- Dual zoning also permits residential usage
- Iconic heritage building in superb location
- Opposite the exciting AMP developments
- Surrounded by Sydney's finest restaurants
- Minutes to Circular Quay and Wynyard St.
- Easy walk to Botanic Gardens & The Rocks

Price : \$800/m2 Gross PA
Building Size : 70 sqm
View : <https://www.noonanproperty.com.au/lease/nsw/sydney-city/sydney/commercial/offices/6672225>

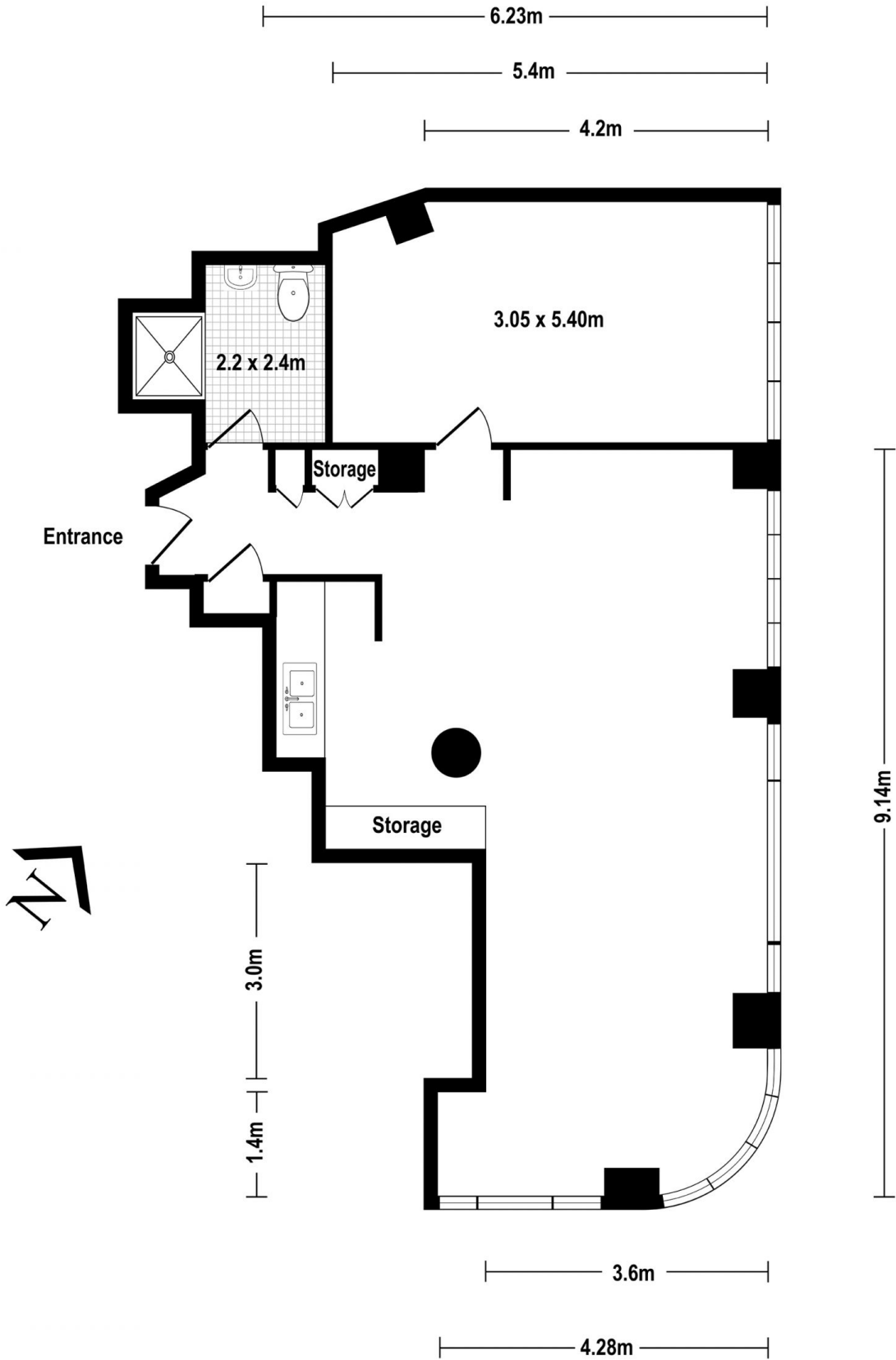


Tim Noonan
02 9231 6000



Ben Kennedy
02 9231 6000

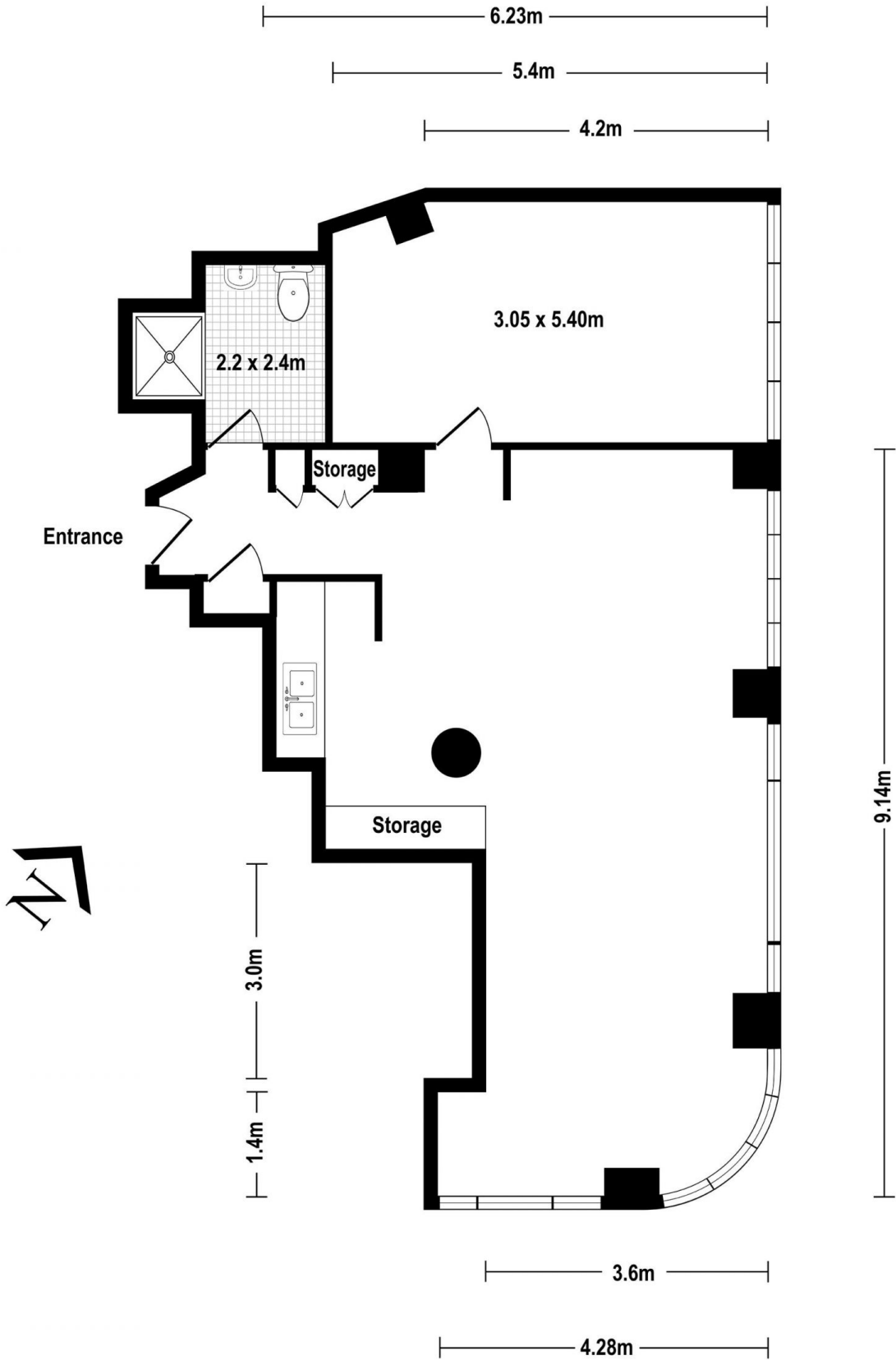
Suite 1, 44 Bridge Street SYDNEY



Approximate Total SQM - 66

This floor plan is intended as a guide only. Layout dimension are approximate only. No representation or warranties of any nature whatsoever are given or intended. Any person using this information should rely on their own enquiries.

Suite 1, 44 Bridge Street SYDNEY



Approximate Total SQM - 66

This floor plan is intended as a guide only. Layout dimension are approximate only. No representation or warranties of any nature whatsoever are given or intended. Any person using this information should rely on their own enquiries.