



701/350 Kent Street Sydney NSW

- Quality space with expansive and attractive views
- Prime position with only one other suite on the floor
- Impressive, professional and efficient workspace
- Three window frontages and excellent natural light
- North east facing with attractive city skyline views
- Fully fitted out with modern and stylish interiors
- High ceilings maximising light and space throughout
- Magnificent corner executive office or meeting room
- Spacious open plan area with multiple workstations
- Additional conference room plus separate storage
- Large internal kitchen and staff breakout with views
- Striking main foyer area and two newly installed lifts
- Accessible via Clarence and Kent Street entranceways
- Surrounded by Sydney's finest restaurants and cafes
- Minutes to Darling Harbour, Wynyard and Hyde Park

Type : Offices
Building Size : 198 sqm
Land Size : 198 sqm
View : <https://www.noonanproperty.com.au/lease/nsw/sydney-city/sydney/commercial/offices/6694964>



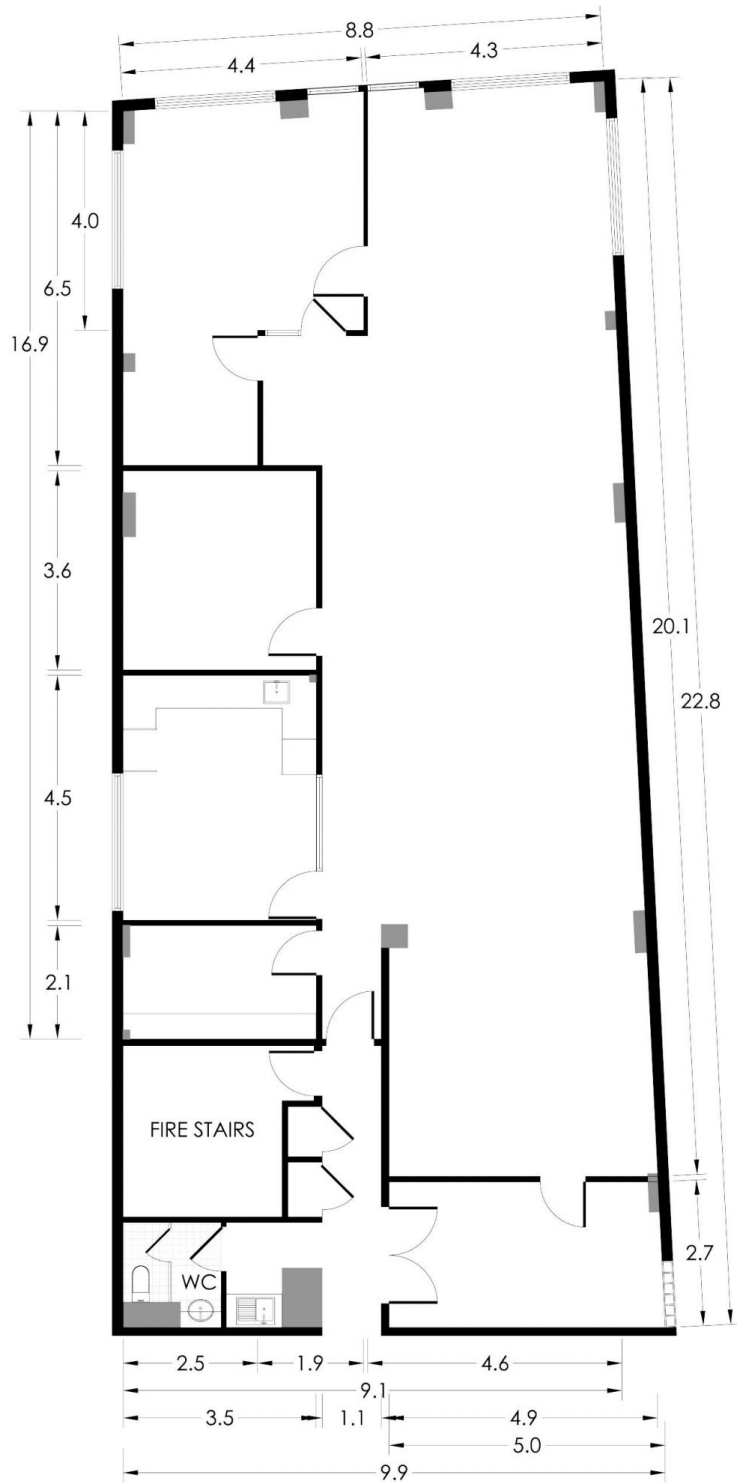
Tim Noonan
0416 286 129



Ben Kennedy
0449 286 129

[For full version visit the website](https://www.noonanproperty.com.au)

SUITE 701 350 KENT STREET SYDNEY



*PLANS SHOWN ONLY INDICATIVE OF LAYOUT. DIMENSIONS ARE APPROXIMATE.
 Floor plan supplied by V-Mark Design Pty Ltd. This floor plan is provided for indicative purposes only.
 Measurements are approximate and not to scale. The vendor, agency and supplier will accept no liability
 for its accuracy. Interested parties are advised to make their own independent enquiries.

**NOONAN
PROPERTY**