

65 York Street Sydney NSW

- Creative commercial suite with Art Deco charm
- Set in one of Sydney's most esteemed buildings
- Impressive, professional and vibrant workspace
- Four window frontages and great natural light
- High ceilings and views overlooking York Street
- Exposed services, pendant lighting & ducted A/C
- Modish reception with direct boardroom access
- Spacious open plan area with 20 x workstations
- Internal kitchenette facilities with a dishwasher
- Separate and secure storage available if required
- Mezzanine positioning with direct lobby access
- Imperial building with imposing street presence
- Exquisite Art Deco Palazzo style built circa 1930
- Striking main lobby area with high spec finishes
- Excellent location near Wynyard and Barangaroo
- Close to Martin Place & George Street Light Rail
- Walking distance to Circular Quay and Town Hall

Building Size : 231 sqm
Land Size : 231 sqm
View : <https://www.noonanproperty.com.au/lease/nsw/sydney-city/sydney/commercial/offices/6877232>

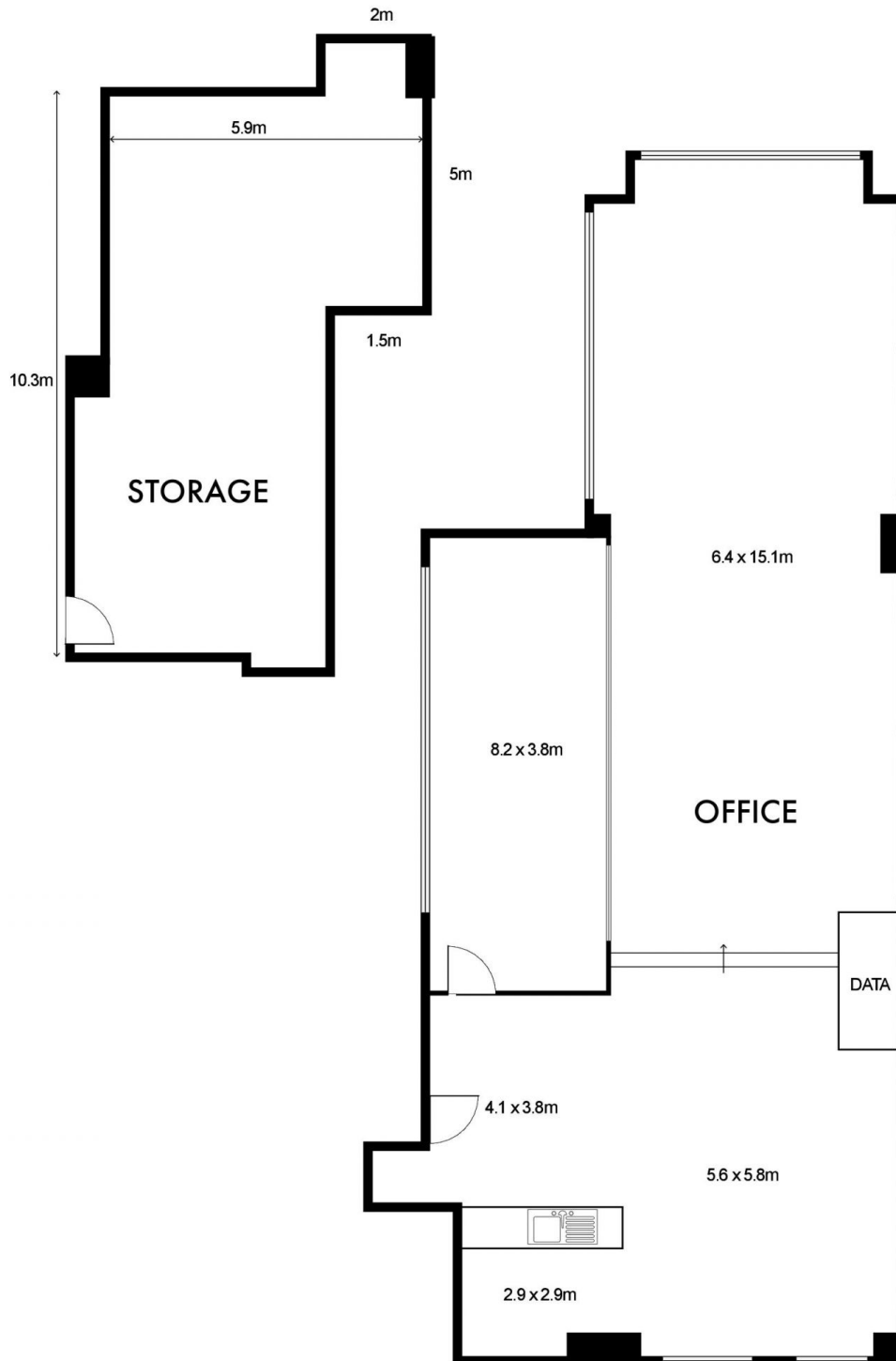


Ben Kennedy
0449 286 129



Tim Noonan
02 9231 6000

65 YORK STREET SYDNEY



0 1 2 3 4 5
SCALE (METRES)

*PLANS SHOWN ONLY INDICATIVE OF LAYOUT. DIMENSIONS ARE APPROXIMATE.
Floor plan supplied by V-Mark Design Pty Ltd. This floor plan is provided for indicative purposes only.
Measurements are approximate and not to scale. The vendor, agency and supplier will accept no liability
for its accuracy. Interested parties are advised to make their own independent enquiries.

NOONAN
PROPERTY