



401/491 Kent Street Sydney NSW

- Prime commercial suite near Town Hall
- Forefront positioning and excellent light
- East facing with attractive tree line views
- High ceilings maximizing light and space
- Stylish and well-designed fitout included
- Spacious reception and boardroom area
- Private office and open plan workspaces
- Custom built cabinetry and ample storage
- Established telephone and data networks
- Direct and prominent lift lobby exposure
- Newly renovated building with three lifts
- Elegantly designed by Davenport Campbell
- Striking entrance featuring Carrara marble
- Distinguished group of building occupants
- Superb mid-town location near Town Hall

Type : Offices
Building Size : 87 sqm
Land Size : 87 sqm
View : <https://www.noonanproperty.com.au/lease/nsw/sydney-city/sydney/commercial/offices/6881393>



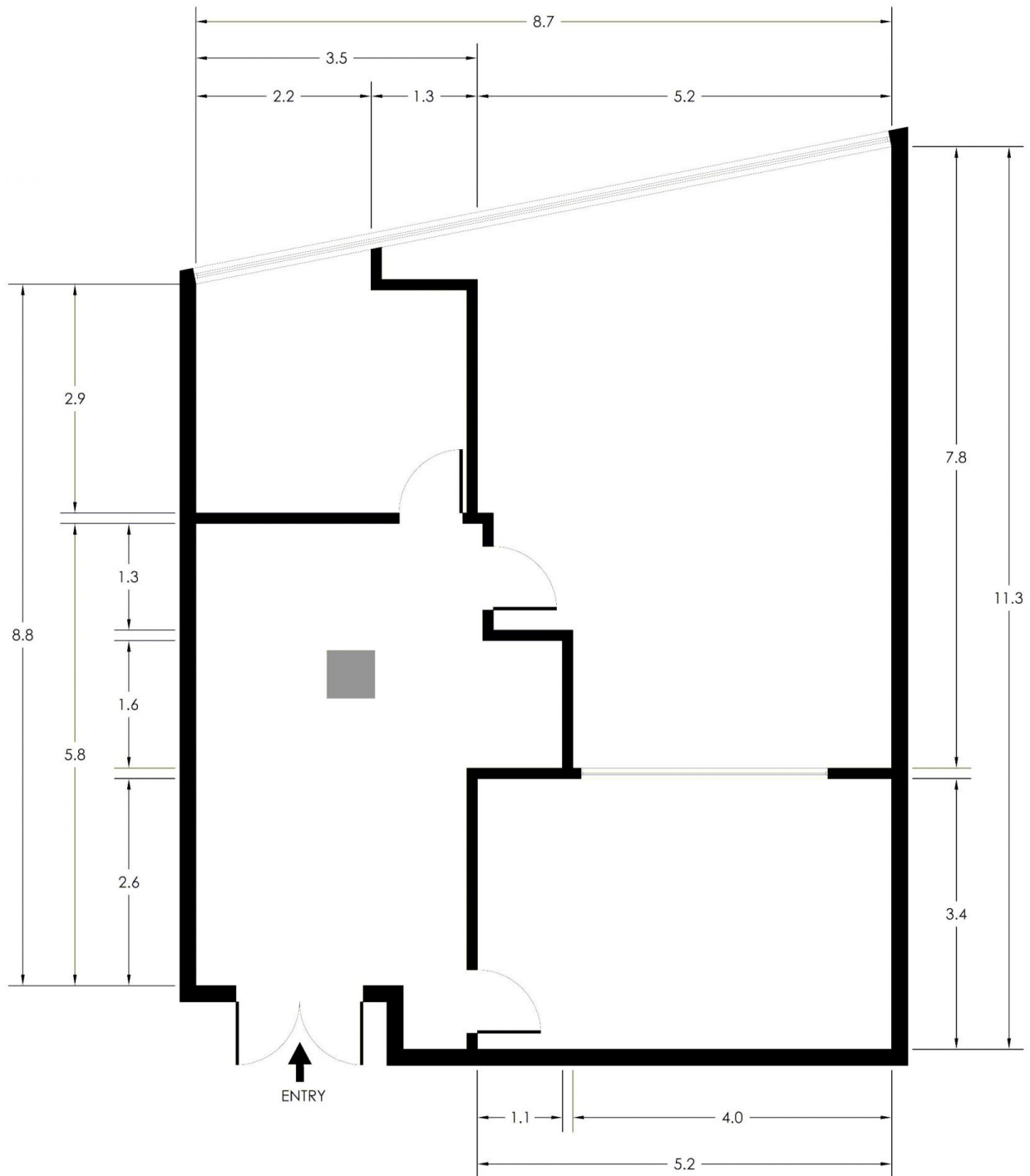
Tim Noonan
0416 286 129



Ben Kennedy
0449 286 129

[For full version visit the website](#)

SUITE 401 491 KENT STREET SYDNEY



*PLANS SHOWN ONLY INDICATIVE OF LAYOUT. DIMENSIONS ARE APPROXIMATE.
Floor plan supplied by V-Mark Design Pty Ltd. This floor plan is provided for indicative purposes only.
Measurements are approximate and not to scale. The vendor, agency and supplier will accept no liability
for its accuracy. Interested parties are advised to make their own independent enquiries.

NOONAN PROPERTY