



## 1301/84 Pitt Street Sydney NSW

- High quality office suite near Martin Place
- Penthouse positioning with balcony access
- High ceilings and spectacular natural light
- Striking views overlooking the CBD skyline
- Large windows maximising light and space
- Attractive reception area with marble tiling
- 5 large executive offices or meeting rooms
- Spacious open plan areas for workstations
- Floor to ceiling glass partitions throughout
- Communal bathroom and shower facilities
- Popular building in highly coveted location
- Attractive main lobby area with three lifts
- Close to Wynyard Station and Barangaroo
- Short walk to Circular Quay and Pitt St Mall
- Surrounded by Sydney's finest restaurants

Size - 210 sqm approx.

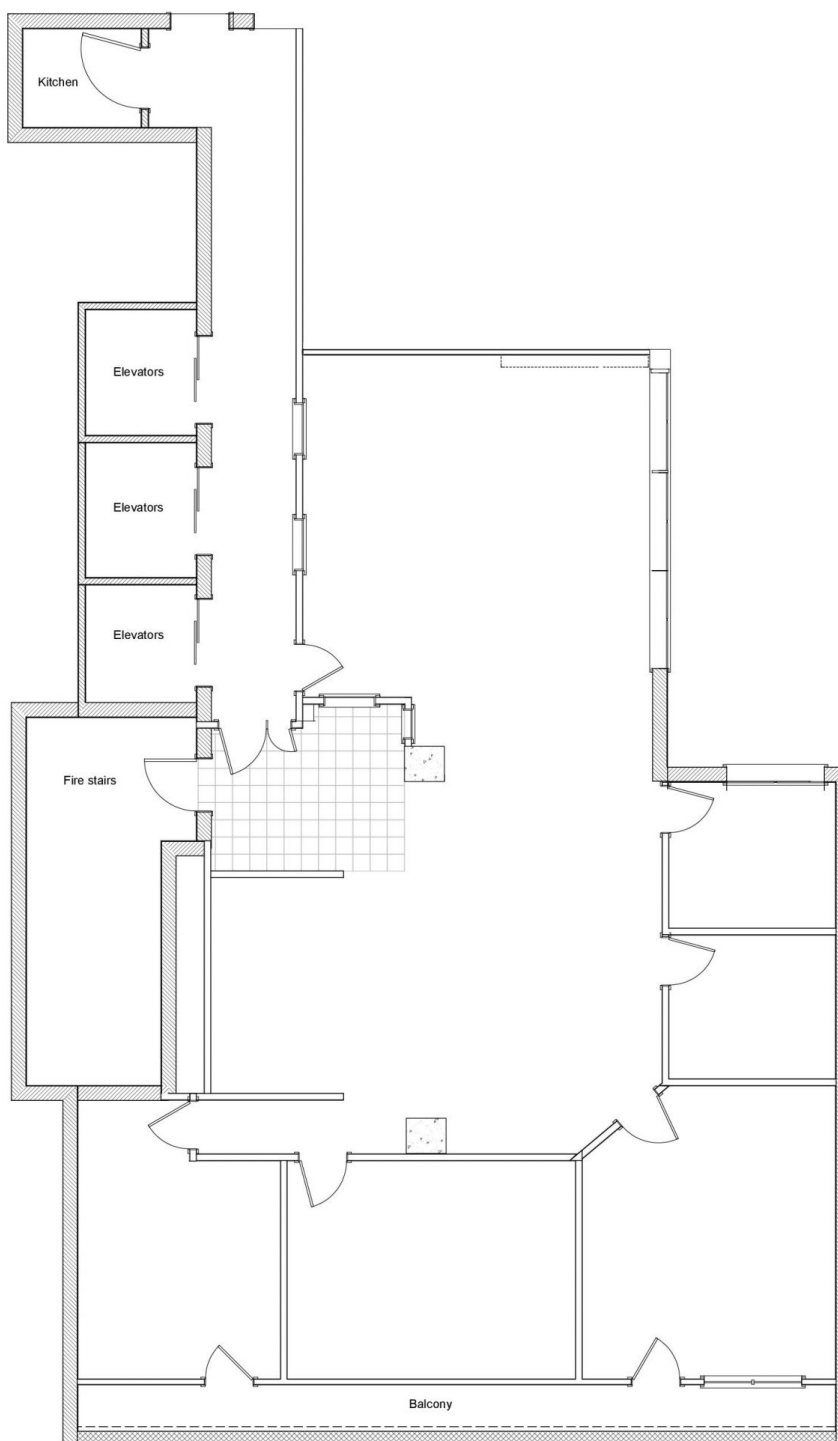
**Price** : \$700/m2 Gross PA  
**Building Size** : 210 sqm  
**Land Size** : 210 sqm  
**View** : <https://www.noonanproperty.com.au/lease/nsw/sydney-city/sydney/commercial/offices/7184091>



**Tim Noonan**  
02 9231 6000

# SUITE 1301

## 84 PITT STREET SYDNEY



\*PLANS SHOWN ONLY INDICATIVE OF LAYOUT. DIMENSIONS ARE APPROXIMATE.  
Floor plan supplied by V-Mark Design Pty Ltd. This floor plan is provided for indicative purposes only.  
Measurements are approximate and not to scale. The vendor, agency and supplier will accept no liability  
for its accuracy. Interested parties are advised to make their own independent enquiries.

# NOONAN PROPERTY