



263 Clarence Street Sydney NSW

2 🚗

Noonan Property are pleased to present Levels 2 and 3, 263 Clarence Street, Sydney for sale. These spectacular properties represent an exclusive opportunity to acquire one or two contiguous whole floor commercial strata properties with parking and storage spaces in a highly sought-after location near Town Hall.

Price : Contact Exclusive Agents

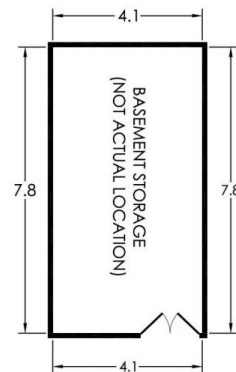
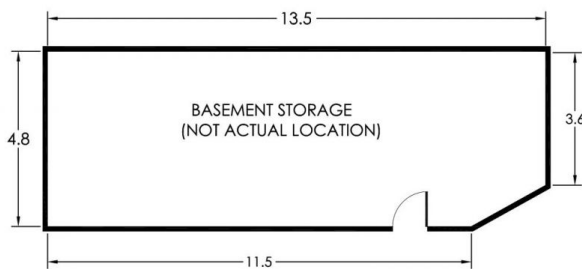
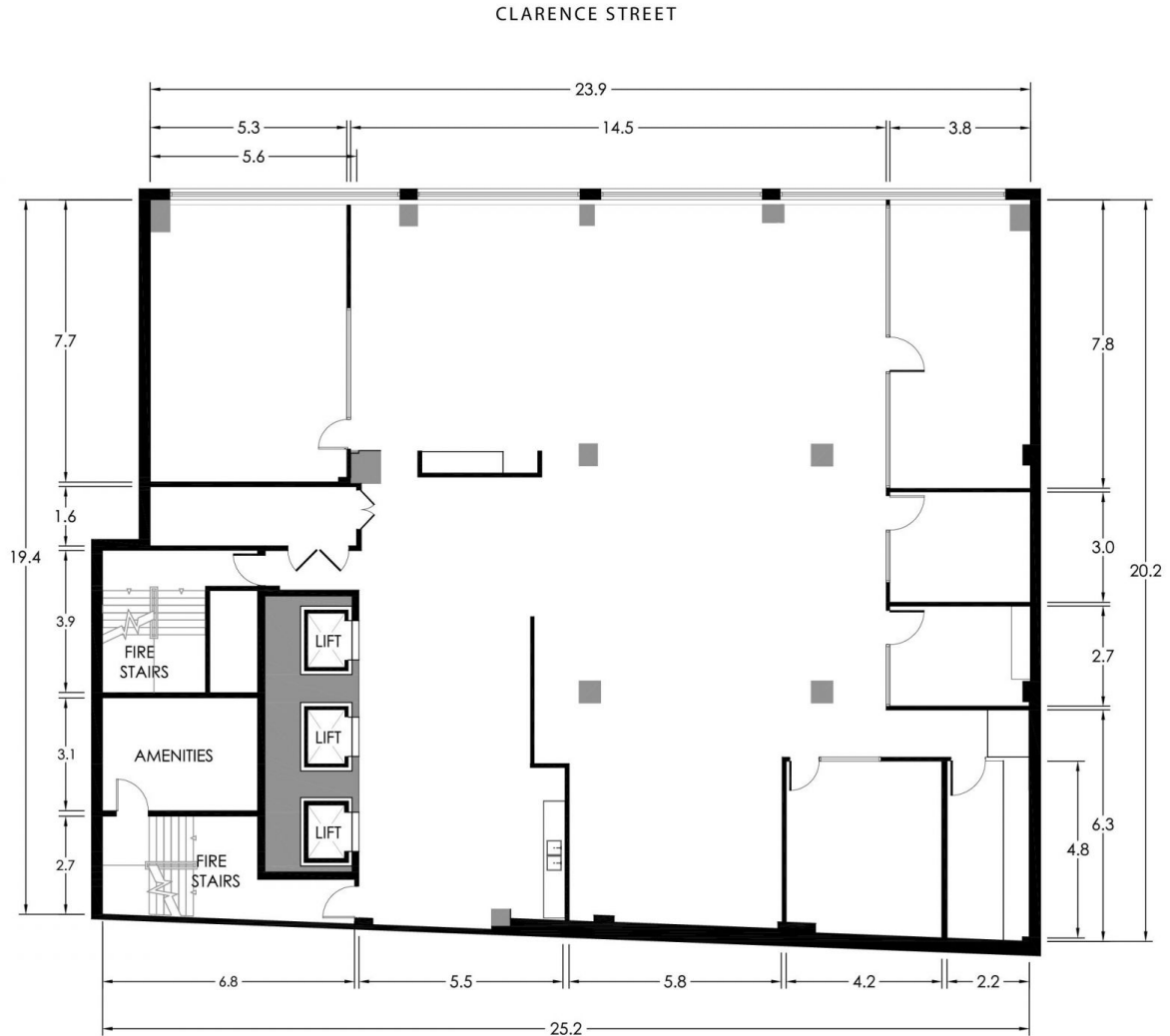
View : <https://www.noonanproperty.com.au/sale/nsw/sydney-city/sydney/commercial/offices/7297859>

- Two contiguous whole floor commercial assets
- Exclusive parking and storage facilities included
- Available for purchase individually or collectively
- Industrial design features with bespoke interiors
- Polished concrete flooring and pendant lighting
- High ceilings, exposed services, quality cabinetry
- Large windows providing excellent natural light
- Collection of offices and open plan workspaces
- Impressive meeting rooms with AV connectivity
- Spacious and luxurious kitchen breakout areas



Tim Noonan
02 9231 6000

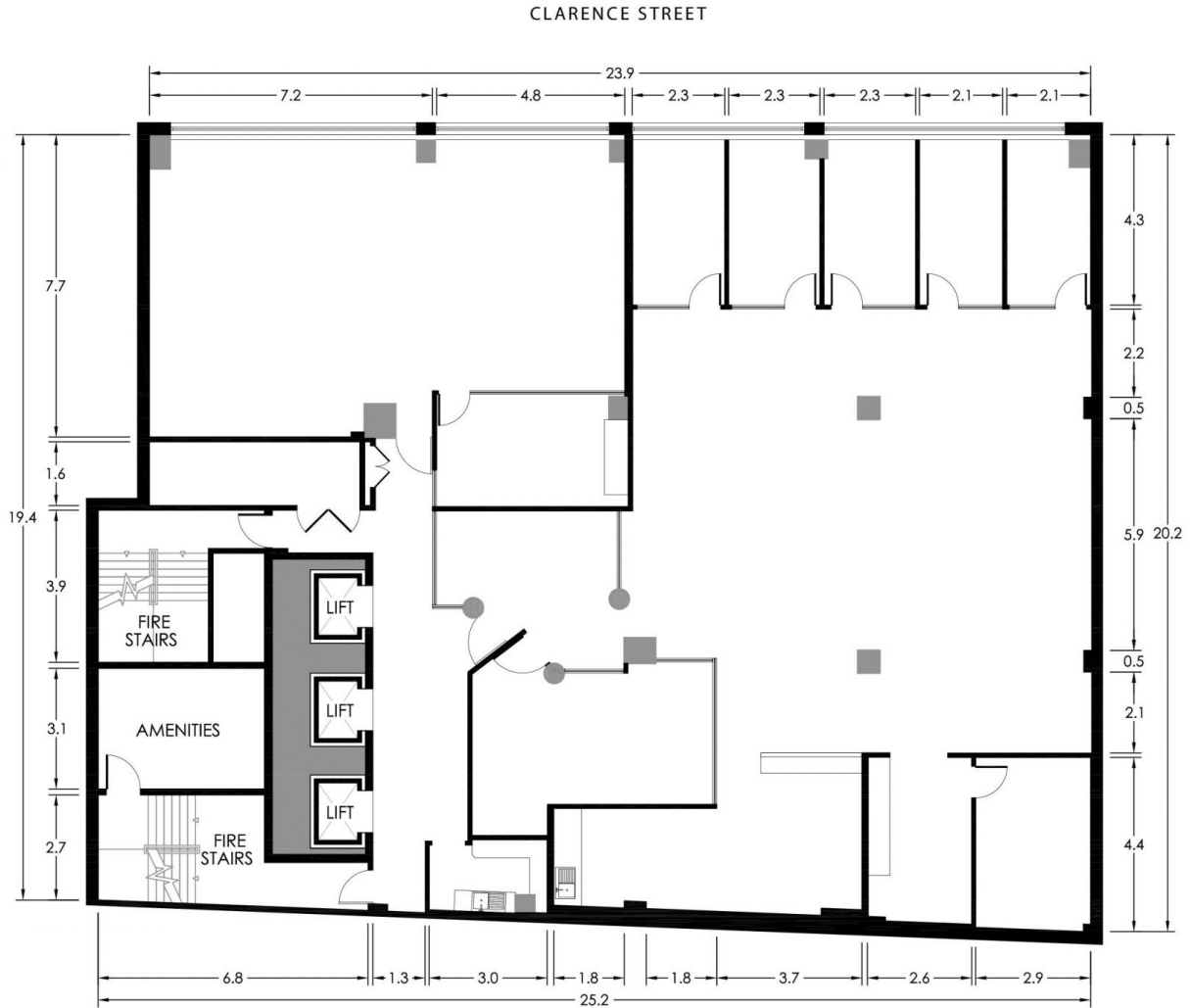
LEVEL 2 263 CLARENCE STREET SYDNEY



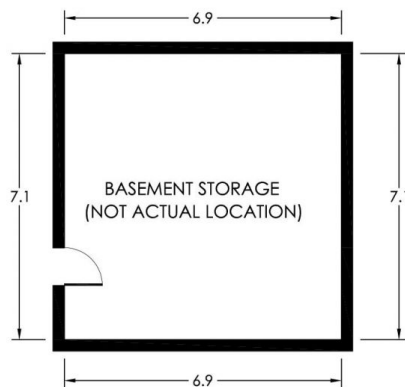
*PLANS SHOWN ONLY INDICATIVE OF LAYOUT. DIMENSIONS ARE APPROXIMATE.
 Floor plan supplied by V-Mark Design Pty Ltd. This floor plan is provided for indicative purposes only.
 Measurements are approximate and not to scale. The vendor, agency and supplier will accept no liability
 for its accuracy. Interested parties are advised to make their own independent enquiries.

**NOONAN
PROPERTY**

LEVEL 3 263 CLARENCE STREET SYDNEY



LEVEL 3



*PLANS SHOWN ONLY INDICATIVE OF LAYOUT. DIMENSIONS ARE APPROXIMATE.
 Floor plan supplied by V-Mark Design Pty Ltd. This floor plan is provided for indicative purposes only.
 Measurements are approximate and not to scale. The vendor, agency and supplier will accept no liability
 for its accuracy. Interested parties are advised to make their own independent enquiries.

**NOONAN
PROPERTY**