



202/234 George Street Sydney NSW

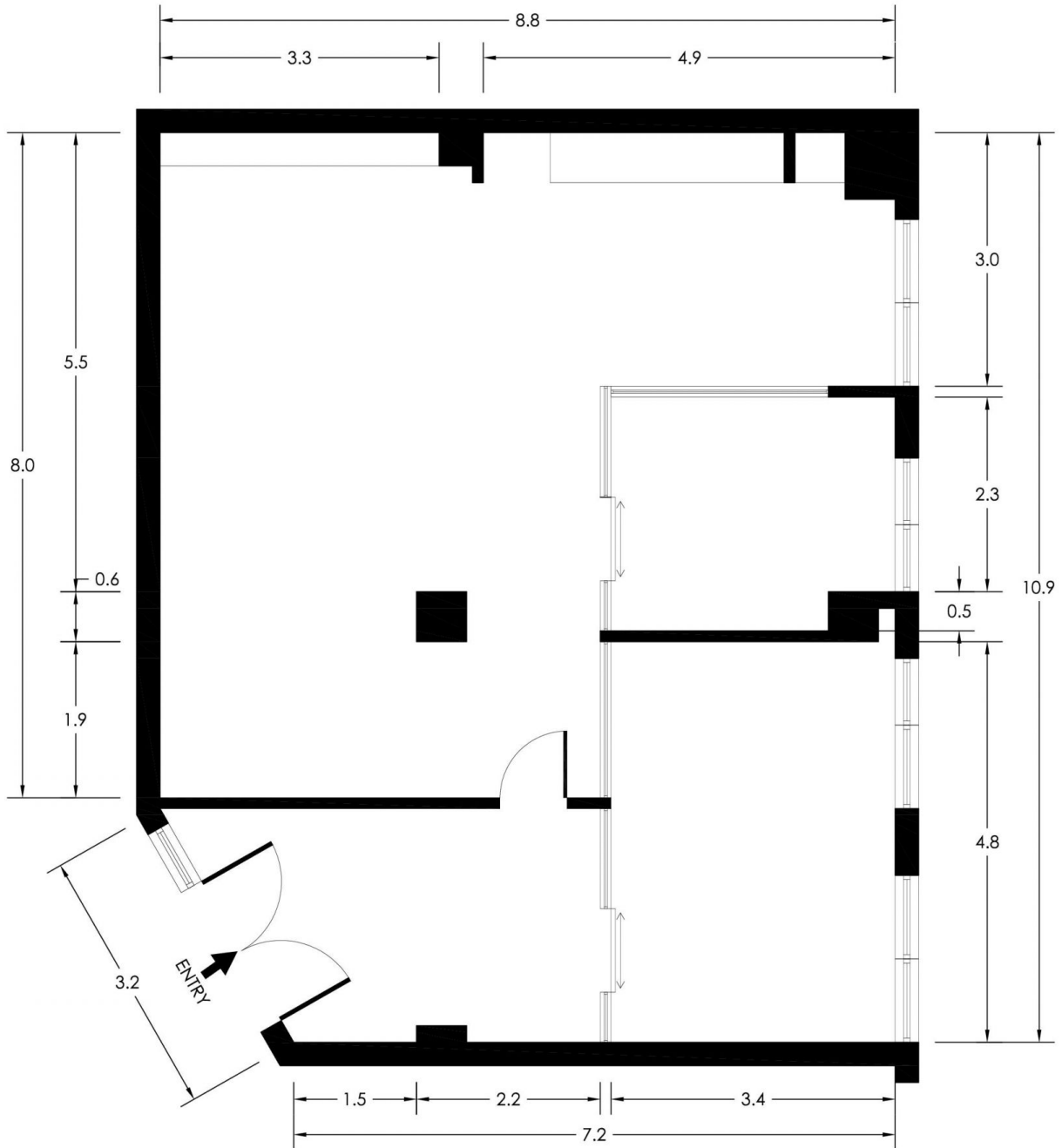
- Premium commercial suite in enviable location
- Striking, contemporary and inspired workspace
- Prime positioning in an acclaimed CBD building
- Large windows providing excellent natural light
- Attractive aspect overlooking Grosvenor Street
- Quality fitout with modern finishes throughout
- Pendant lighting and full height glass partitions
- Impressive reception area with timber flooring
- Spacious boardroom area with AV connectivity
- Open plan workspaces plus an executive office
- Separate utilities space with integrated storage
- On floor kitchen plus male and female facilities
- Stylish building with prominent street presence
- Prime location near Wynyard and Circular Quay
- Handy to Barangaroo, the ASX and Martin Place
- Easy access to the new George Street Light Rail
- Surrounded by premium restaurants and hotels

Price : \$1000/m2 Gross PA
Building Size : 95 sqm
Land Size : 95 sqm
View : <https://www.noonanproperty.com.au/lease/nsw/sydney-city/sydney/commercial/offices/7336426>



Tim Noonan
02 9231 6000

SUITE 202 234 GEORGE STREET SYDNEY



*PLANS SHOWN ONLY INDICATIVE OF LAYOUT. DIMENSIONS ARE APPROXIMATE.
Floor plan supplied by V-Mark Design Pty Ltd. This floor plan is provided for indicative purposes only.
Measurements are approximate and not to scale. The vendor, agency and supplier will accept no liability
for its accuracy. Interested parties are advised to make their own independent enquiries.

NOONAN
PROPERTY