



202/234 George Street Sydney NSW

Noonan Property are pleased to present Suite 202, 234 George Street, Sydney for sale via Private Treaty. This is an exciting opportunity to acquire one of Sydney's finest commercial strata properties in a highly coveted location near Circular Quay and Wynyard.

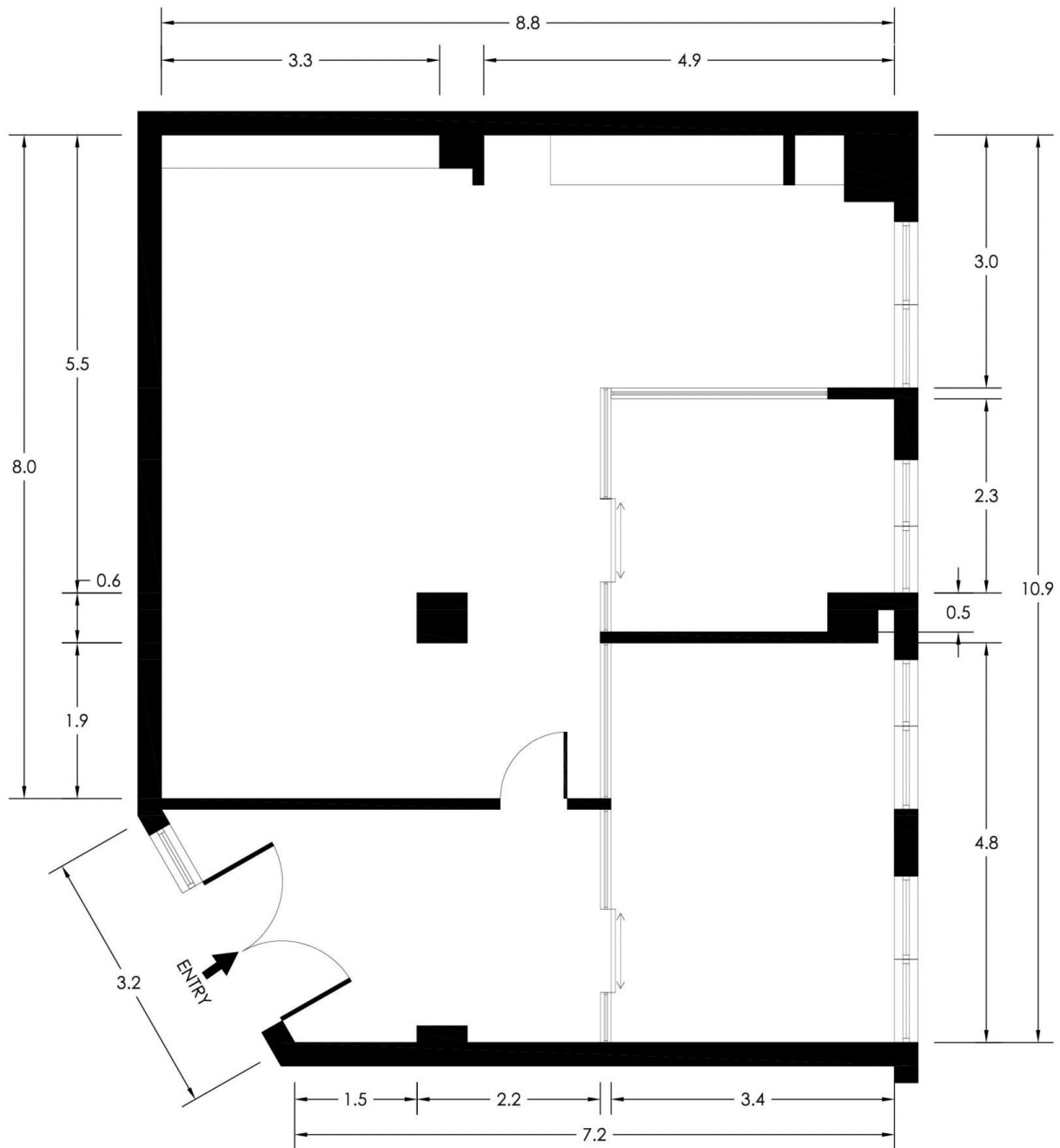
- Premium commercial suite in enviable location
- Striking, contemporary and inspired workspace
- Prime positioning in an acclaimed CBD building
- Large windows providing excellent natural light
- Attractive aspect overlooking Grosvenor Street
- Quality fitout with modern finishes throughout
- Pendant lighting and full height glass partitions
- Impressive reception area with timber flooring
- Spacious boardroom area with AV connectivity
- Open plan workspaces plus an executive office
- Separate utilities space with integrated storage

Price : \$1,950,000
Building Size : 95 sqm
Land Size : 95 sqm
View : <https://www.noonanproperty.com.au/sale/nsw/sydney-city/sydney/commercial/offices/7370430>



Tim Noonan
02 9231 6000

SUITE 202
234 GEORGE STREET SYDNEY



*PLANS SHOWN ONLY INDICATIVE OF LAYOUT. DIMENSIONS ARE APPROXIMATE.
Floor plan supplied by V-Mark Design Pty Ltd. This floor plan is provided for indicative purposes only.
Measurements are approximate and not to scale. The vendor, agency and supplier will accept no liability
for its accuracy. Interested parties are advised to make their own independent enquiries.

NOONAN
PROPERTY