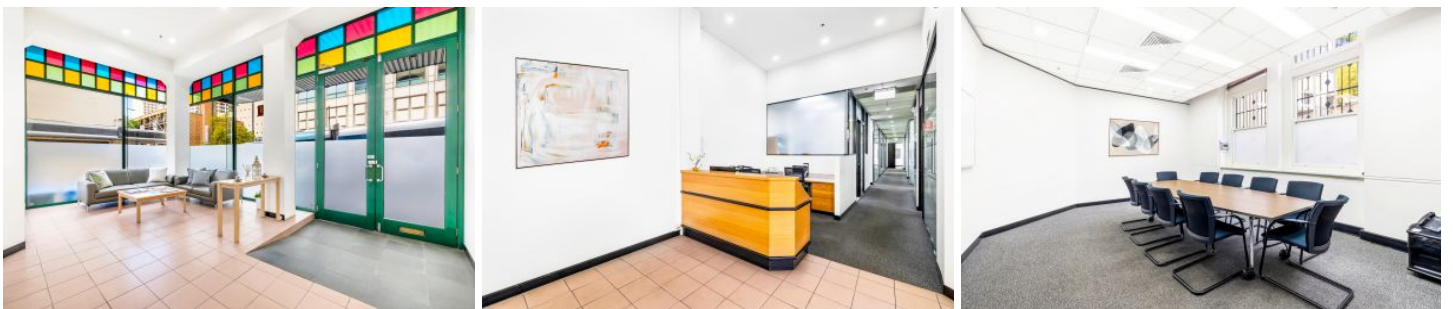


NOONAN PROPERTY



154 Elizabeth Street Sydney NSW

Noonan Property are pleased to offer for lease an impressive and unique ground floor commercial space comprising 388 sqm with excellent street front exposure at 154 Elizabeth Street, Sydney.

This premium offering represents an exciting opportunity to occupy an exclusive commercial property with ultra high ceilings, corner positioning and excellent natural light in a highly coveted location near Museum Station, Haymarket, World Square, Downing Centre and Hyde Park.

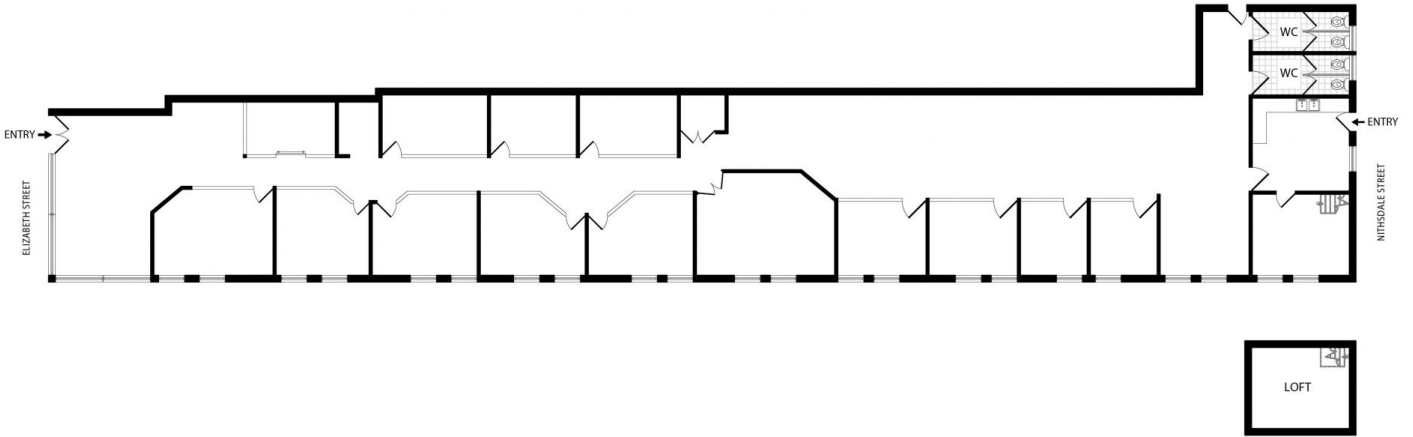
The property features direct street access and is ideally suited for retail, office or showroom purposes. Internally the property has been stylishly designed for a leading accounting firm with a high-quality fitout featuring a combination of impressive meeting rooms, executive offices and open plan workspaces along with internal

Price : \$575/m2 Gross PA
Building Size : 388 sqm
Land Size : 388 sqm
View : <https://www.noonanproperty.com.au/lease/nsw/sydney-city/sydney/commercial/offices/7462117>



Tim Noonan
02 9231 6000

GROUND FLOOR 154 ELIZABETH STREET SYDNEY



0 1 2 3 4 5 SCALE (METRES)

*PLANS SHOWN ONLY INDICATIVE OF LAYOUT. DIMENSIONS ARE APPROXIMATE.
Floor plan supplied by V-Mark Design Pty Ltd. This floor plan is provided for indicative purposes only. Measurements are approximate and not to scale. The vendor, agency and supplier will accept no liability for its accuracy. Interested parties are advised to make their own independent enquiries.

**NOONAN
PROPERTY**