

NOONAN PROPERTY



148 Elizabeth Street Sydney NSW

3 🚗

Noonan Property are pleased to offer for lease an impressive whole floor commercial property comprising 337 sqm with excellent natural light at 148 Elizabeth Street, Sydney.

This premium yet inexpensive offering represents an unique opportunity to occupy an exclusive commercial property with high ceilings, whole floor positioning and excellent natural light in a highly coveted location near Museum Station, Haymarket, World Square, Surry Hills and Hyde Park.

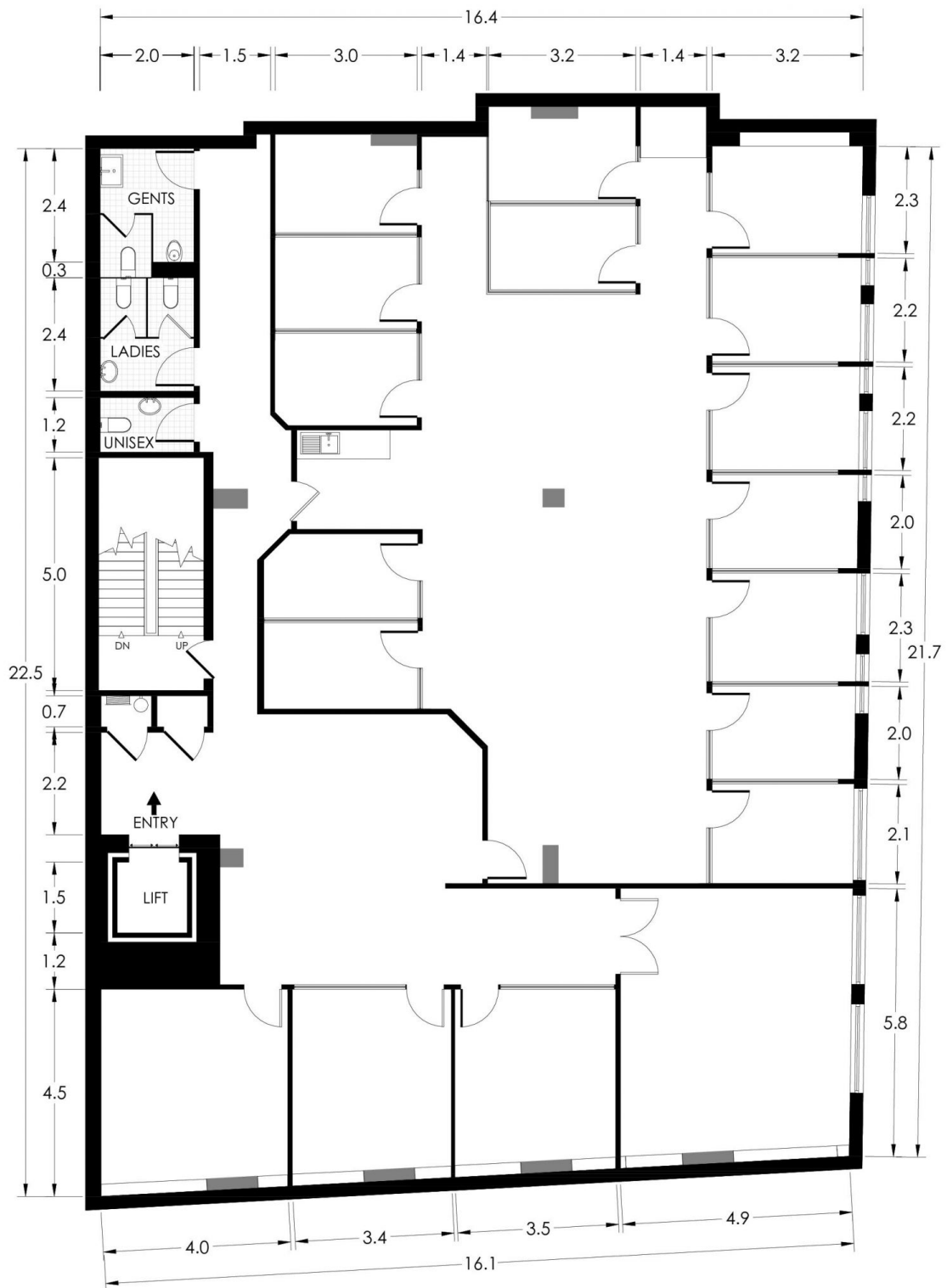
Internally the property has been stylishly designed for a legal business with a high-quality fitout featuring a combination of impressive meeting rooms, executive offices and open plan workspaces along with internal kitchen, bathroom and ample storage facilities. There is

Price : \$495/m2 Gross PA
Building Size : 337 sqm
Land Size : 337 sqm
View : <https://www.noonanproperty.com.au/lease/nsw/sydney-city/sydney/commercial/offices/7547741>



Tim Noonan
02 9231 6000

LEVEL 2 148 ELIZABETH STREET SYDNEY



*PLANS SHOWN ONLY INDICATIVE OF LAYOUT. DIMENSIONS ARE APPROXIMATE.
 Floor plan supplied by V-Mark Design Pty Ltd. This floor plan is provided for indicative purposes only.
 Measurements are approximate and not to scale. The vendor, agency and supplier will accept no liability
 for its accuracy. Interested parties are advised to make their own independent enquiries.

NOONAN
PROPERTY