



## Level 14/70 Pitt Street Sydney NSW

Noonan Property Sydney are pleased to present for sale The Penthouse and Rooftop Terrace, Level 14, 70 Pitt Street, Sydney.

This premium property represents a spectacular opportunity to acquire a whole floor commercial penthouse comprising 348 sqm plus a large rooftop terrace comprising 146 sqm positioned within Sydney's most desirable business location near Wynyard, Circular Quay and Martin Place.

The Level 14 penthouse features large window frontages, excellent natural light, internal kitchen amenities and impressive skyline views capturing many of Sydney's landmark commercial buildings including Angel Place, Grosvenor Place, Chifley Tower, Aurora Place and Australia Square.

**Price** : Guide \$3,600,000

**View** : <https://www.noonanproperty.com.au/sale/nsw/sydney-city/sydney/commercial/offices/7554729>

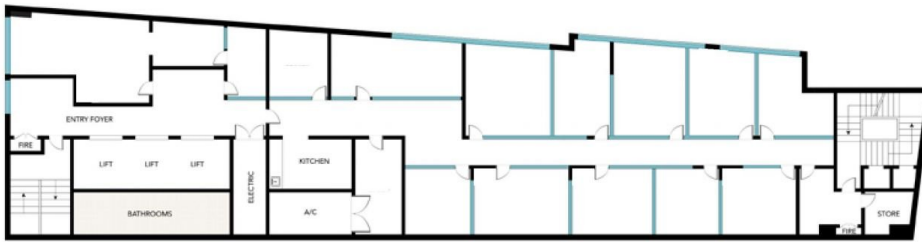


**Tim Noonan**  
02 9231 6000

# PENTHOUSE AND ROOFTOP TERRACE, LEVEL 14, 70 PITT STREET, SYDNEY



CURRENT FLOOR PLAN - LEVEL 14



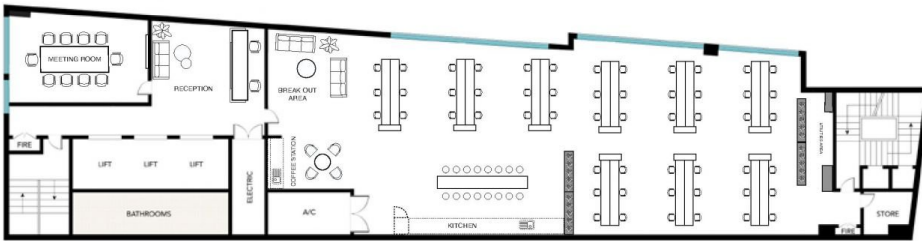
Level 14: 348 sqm

CURRENT FLOOR PLAN - ROOFTOP



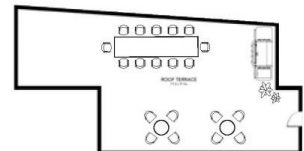
Rooftop: 146 sqm

CONCEPT FITOUT DESIGN - LEVEL 14



Level 14: 348 sqm

CONCEPT FITOUT DESIGN - ROOFTOP



Rooftop: 146 sqm



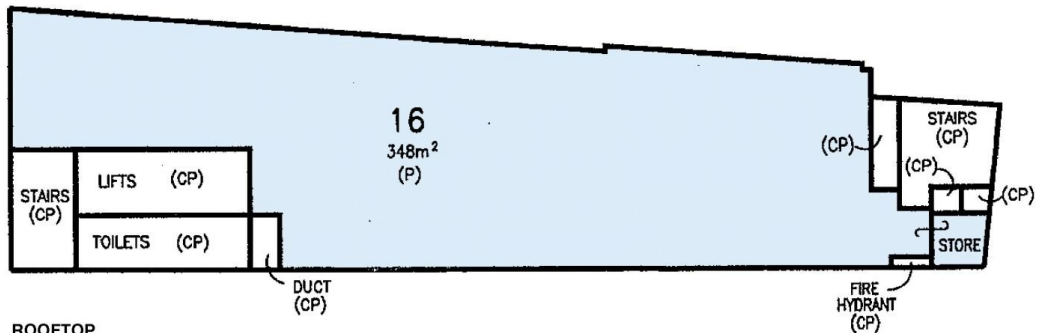
\*PLANS SHOWN ONLY INDICATIVE OF LAYOUT. DIMENSIONS ARE APPROXIMATE.  
 Floor plan supplied by V-Mark Design Pty Ltd. This floor plan is provided for indicative purposes only. Measurements are approximate and not to scale. The vendor, agency and supplier will accept no liability for its accuracy. Interested parties are advised to make their own independent enquiries.

**NOONAN**  
PROPERTY

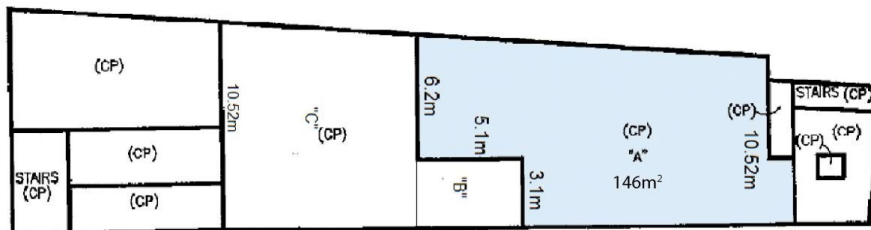
# PENTHOUSE AND ROOFTOP TERRACE, LEVEL 14, 70 PITT STREET, SYDNEY



LEVEL 14



ROOFTOP



\*PLANS SHOWN ONLY INDICATIVE OF LAYOUT. DIMENSIONS ARE APPROXIMATE.  
 Floor plan supplied by V-Mark Design Pty Ltd. This floor plan is provided for indicative purposes only. Measurements are approximate and not to scale. The vendor, agency and supplier will accept no liability for its accuracy. Interested parties are advised to make their own independent enquiries.

**NOONAN**  
PROPERTY