



## 802/60 York Street Sydney NSW

- Modern and impressive commercial suite
- Large windows and excellent natural light
- Freshly painted and new carpet throughout
- Prime positioning overlooking York Street
- Direct and prominent lift lobby exposure
- Efficient and easily sub dividable floor plan
- Modern male and female bathroom facilities
- Striking common areas with quality finishes
- Prominent commercial building with two lifts
- Main lobby area with popular café & bakery
- Well managed building with quality services
- Prestigious, convenient and vibrant location
- Close to Martin Place, QVB and Barangaroo
- Minutes to Town Hall and Wynyard Station
- Surrounded by excellent amenities and cafes

Size - 130 sqm approx.

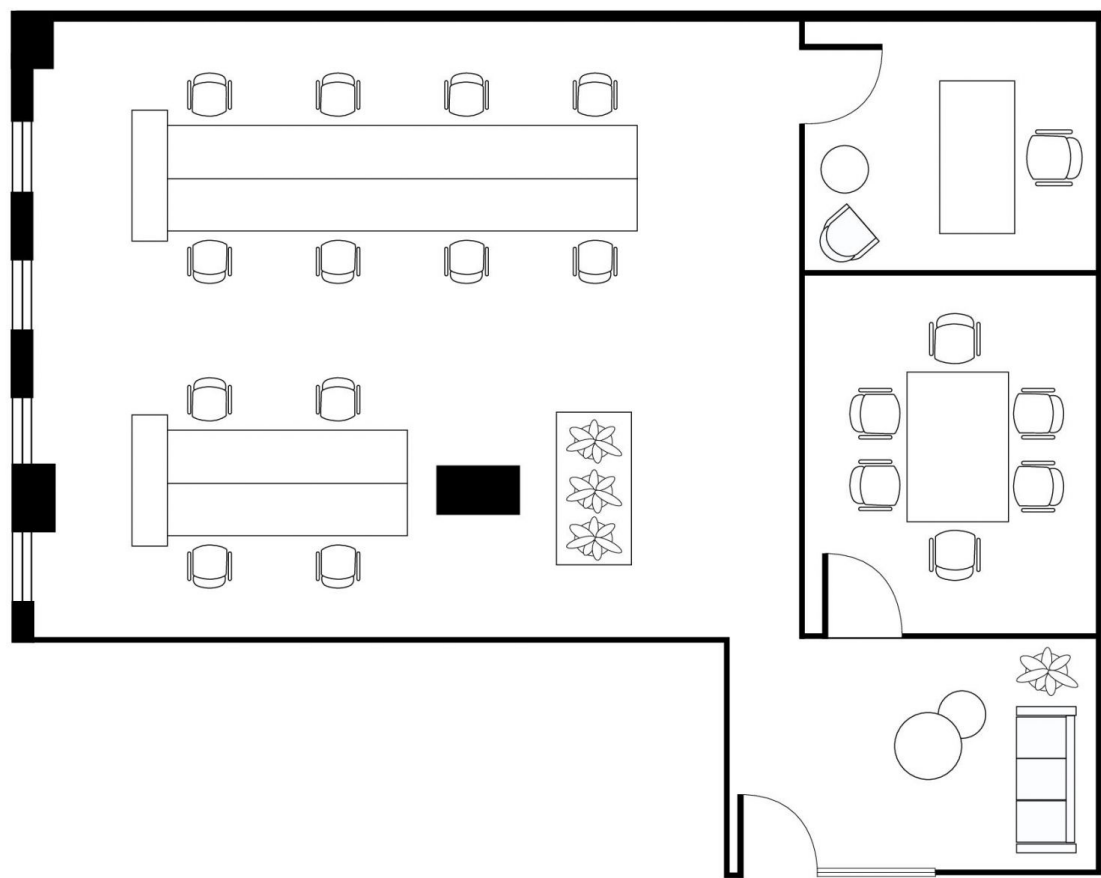
**Price** : \$500/m2 Gross PA  
**Building Size** : 130 sqm  
**Land Size** : 130 sqm  
**View** : <https://www.noonanproperty.com.au/lease/nsw/sydney-city/sydney/commercial/offices/7626520>



**Tim Noonan**  
**02 9231 6000**

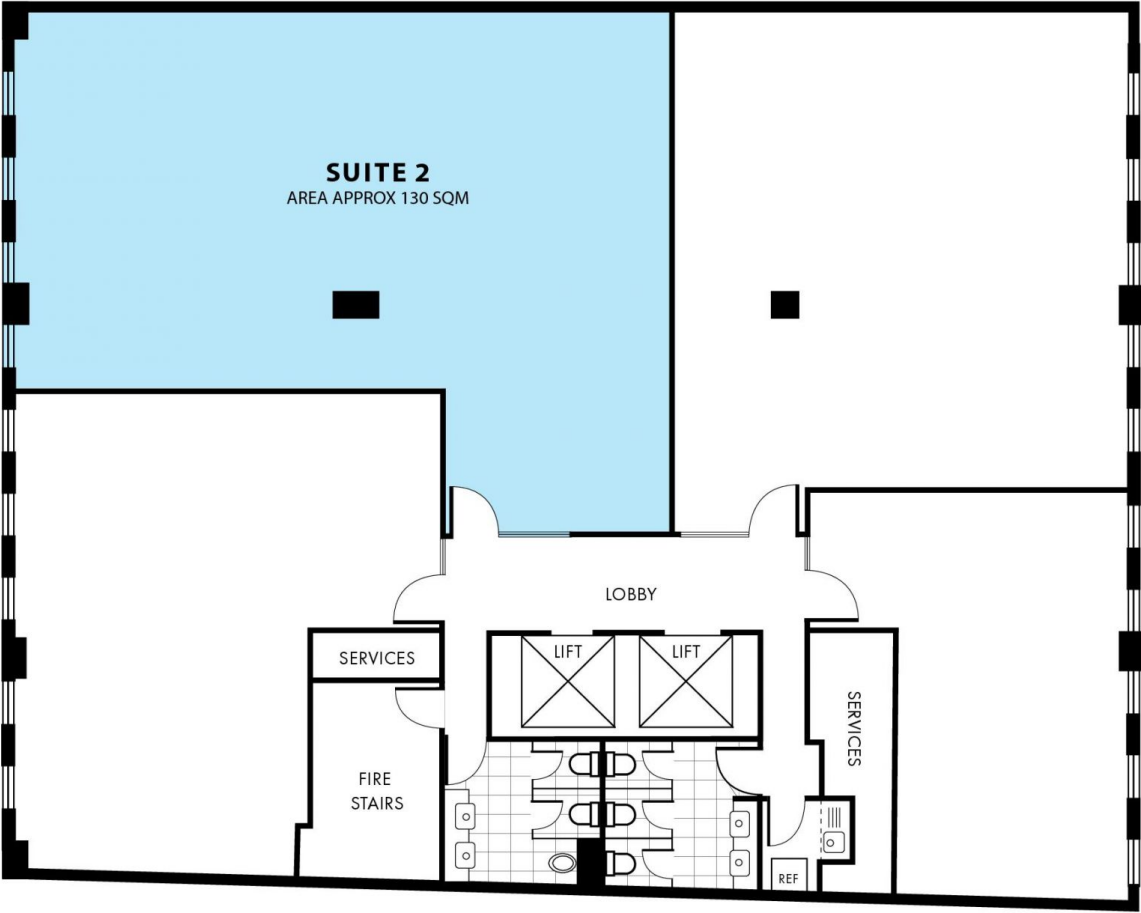
# SUITE 802, LEVEL 8, 60 YORK STREET SYDNEY

SUITE 802 - CONCEPT FITOUT DESIGN



\*PLANS SHOWN ONLY INDICATIVE OF LAYOUT. DIMENSIONS ARE APPROXIMATE.

# SUITE 802, LEVEL 8, 60 YORK STREET SYDNEY



\*PLANS SHOWN ONLY INDICATIVE OF LAYOUT. DIMENSIONS ARE APPROXIMATE.

**NOONAN**  
**PROPERTY**