



151 Castlereagh Street Sydney NSW

Noonan Property are pleased to offer for sub-lease this impressive and highly economical commercial space comprising 150 sqm approx in a highly coveted location near Martin Place, Town Hall and Hyde Park.

This unique offering is an opportunity to exclusively occupy three executive offices and an open plan workspace for multiple workstations along with shared access to two impressive meeting rooms with AV connectivity, a spacious reception area with signage available, utilities area and a large breakout space with quality kitchen amenities.

Internally the office has been stylishly fitted out with modern interiors and additional features include large windows, high ceilings and excellent natural light.

[For full version visit the website](https://www.noonanproperty.com.au/lease/nsw/sydney-city/sydney/commercial/offices/7633568)

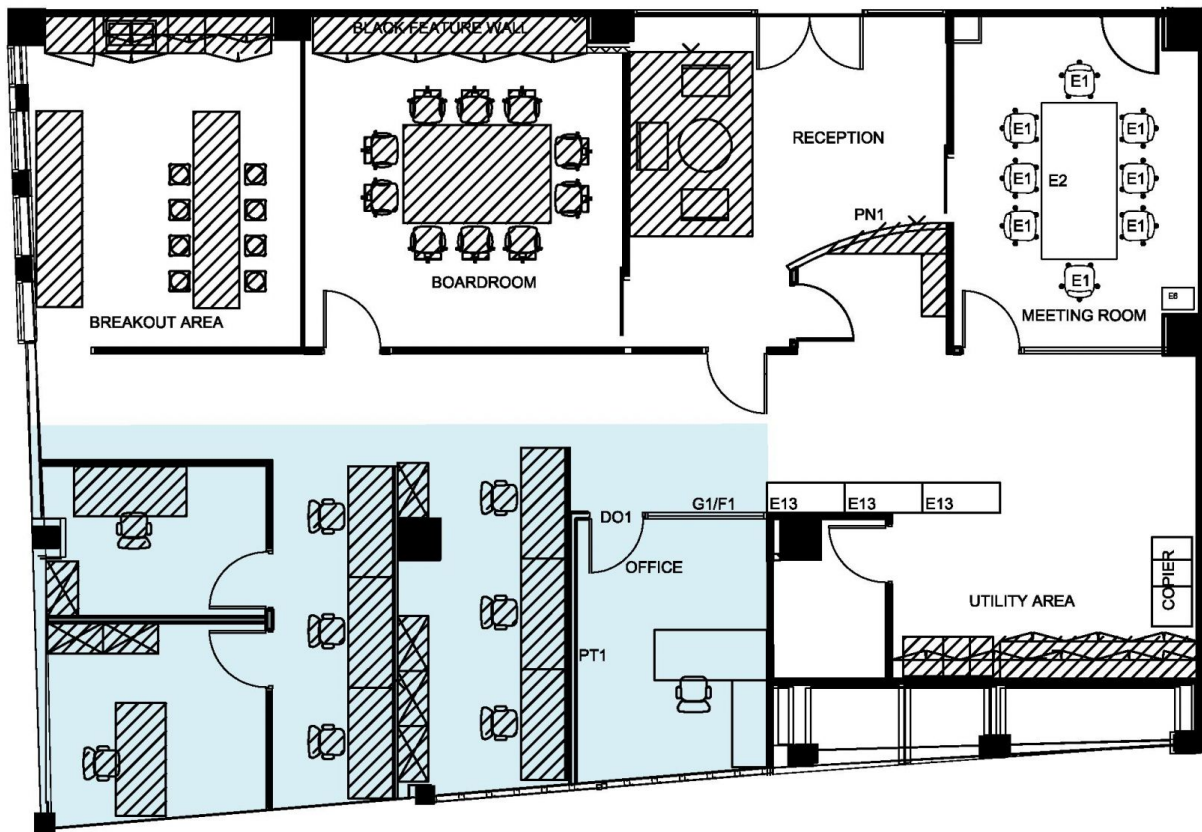
Type : Offices
Building Size : 150 sqm
Land Size : 150 sqm
View : <https://www.noonanproperty.com.au/lease/nsw/sydney-city/sydney/commercial/offices/7633568>



Tim Noonan
0416 286 129

SUITE 501

151 CASTLEREAGH STREET SYDNEY



*PLANS SHOWN ONLY INDICATIVE OF LAYOUT. DIMENSIONS ARE APPROXIMATE.
Floor plan supplied by V-Mark Design Pty Ltd. This floor plan is provided for indicative purposes only.
Measurements are approximate and not to scale. The vendor, agency and supplier will accept no liability
for its accuracy. Interested parties are advised to make their own independent enquiries.

NOONAN PROPERTY