



## 101/370 Pitt Street Sydney NSW

Noonan Property are pleased to offer for lease this modern and impressive commercial suite comprising 127 sqm with excellent natural light in the esteemed Chambers building located at 370 Pitt Street, Sydney.

This premium offering is a unique opportunity to occupy an exclusive commercial property with high ceilings, corner positioning, expansive window frontages and excellent natural light in a highly coveted location near Town Hall, Museum Station, Haymarket, World Square, Surry Hills and Hyde Park.

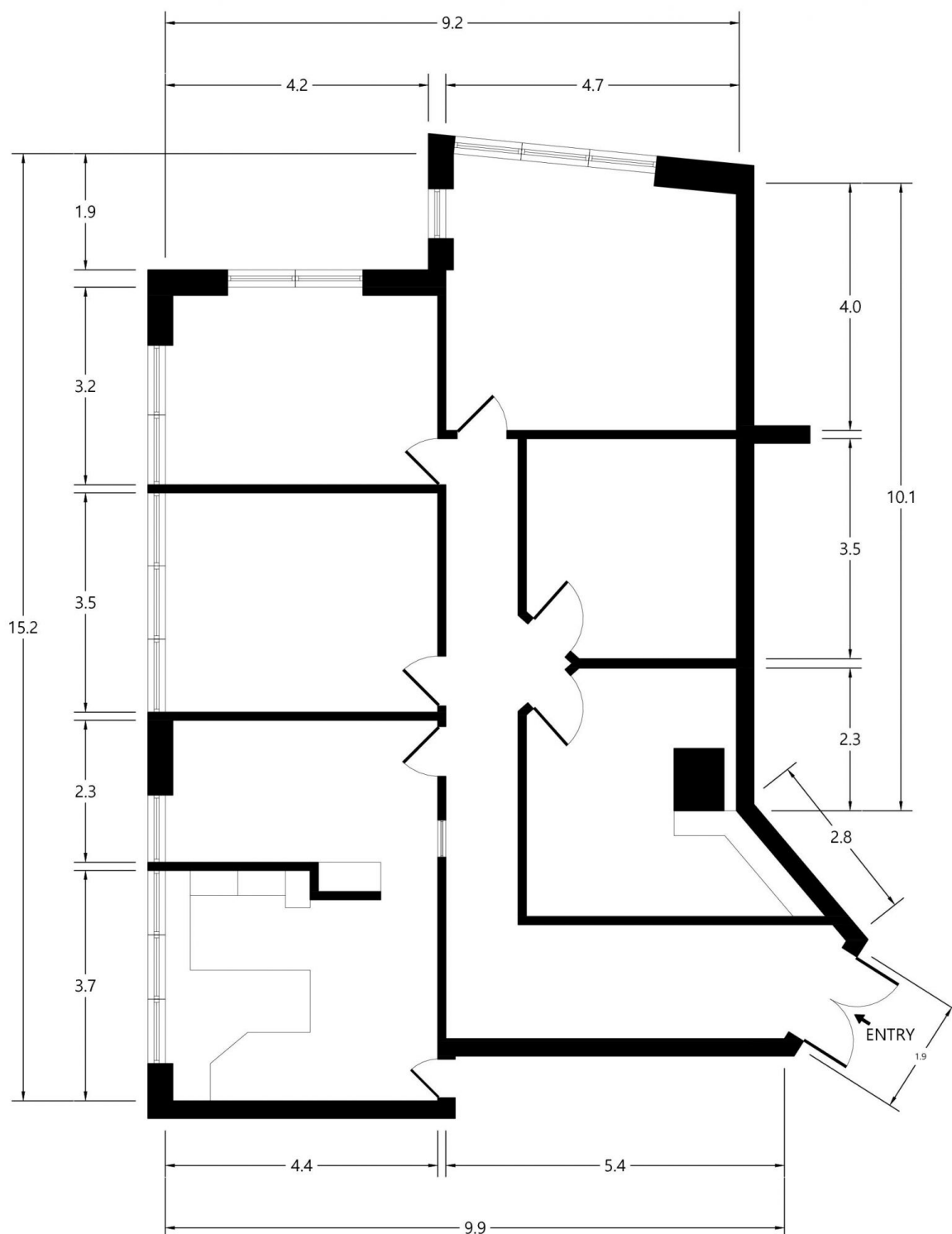
Internally the property has been freshly painted and stylishly designed for a legal business with a quality fitout featuring a combination of impressive meeting rooms and executive offices along with easy access to kitchen and bathroom amenities.

**Price** : \$500/m2 Gross PA  
**Building Size** : 127 sqm  
**Land Size** : 127 sqm  
**View** : <https://www.noonanproperty.com.au/lease/nsw/sydney-city/sydney/commercial/offices/7696577>



**Tim Noonan**  
**02 9231 6000**

# SUITE 101, THE CHAMBERS 370 PITT STREET SYDNEY



0 1 2 3 4 5  
SCALE (METRES)

\*PLANS SHOWN ONLY INDICATIVE OF LAYOUT. DIMENSIONS ARE APPROXIMATE.  
Floor plan supplied by V-Mark Design Pty Ltd. This floor plan is provided for indicative purposes only.  
Measurements are approximate and not to scale. The vendor, agency and supplier will accept no liability  
for its accuracy. Interested parties are advised to make their own independent enquiries.

**NOONAN**  
**PROPERTY**