



102/84 Pitt Street Sydney NSW

- High quality office suite near Martin Place
- Stylish and efficient office fitout included
- Exec office plus 6 open plan workstations
- Impressive boardroom with AV connectivity
- Large windows maximising light and space
- Custom built cabinetry and ample storage
- Established telephone and data networks
- Internal kitchen facilities with ZIP HydroTap
- Adjoining bathroom and shower amenities
- Direct and prominent lift lobby exposure
- Attractive main lobby area with three lifts
- Highly coveted location near Martin Place
- Close to Wynyard Station and Barangaroo
- Short walk to Circular Quay and Pitt St Mall
- Surrounded by Sydney's finest restaurants

Size - 77 sqm approx.

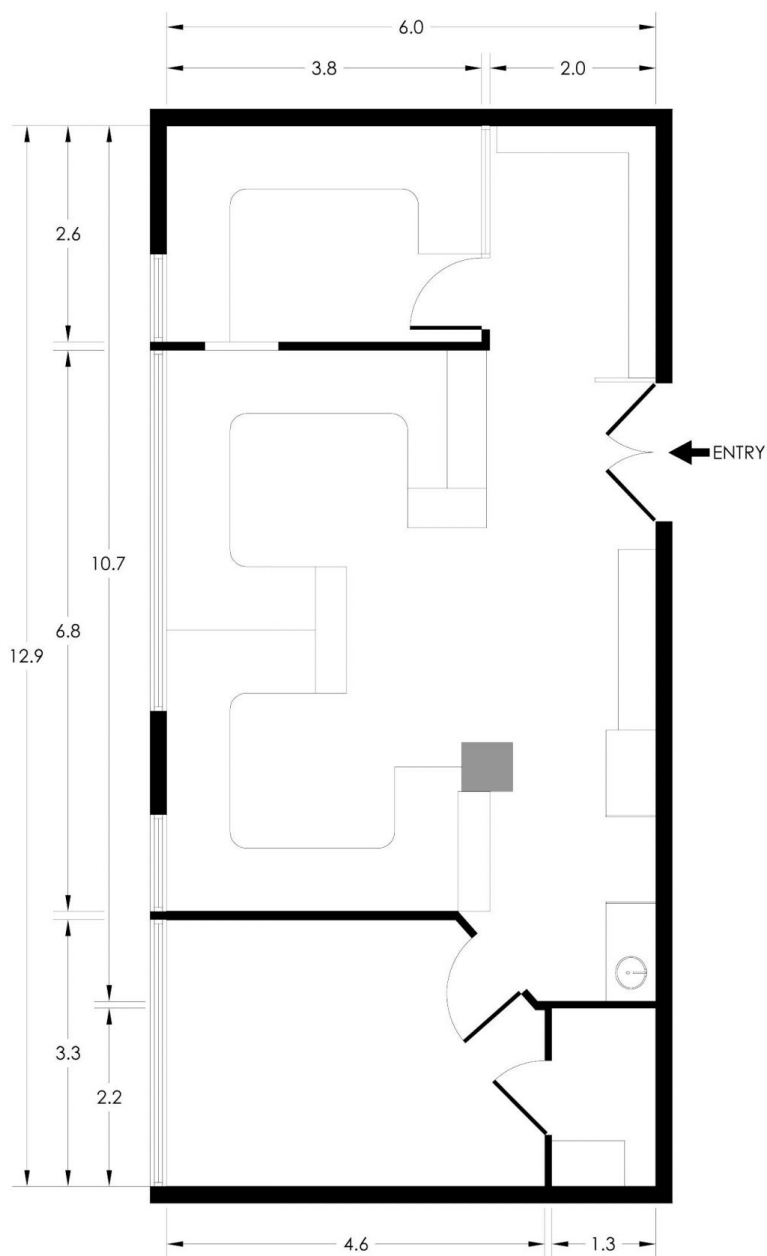
Price : \$750/m2 Gross PA
Building Size : 77 sqm
Land Size : 77 sqm
View : <https://www.noonanproperty.com.au/lease/nsw/sydney-city/sydney/commercial/offices/7704583>



Tim Noonan
02 9231 6000

SUITE 102

84 PITT STREET SYDNEY



*PLANS SHOWN ONLY INDICATIVE OF LAYOUT. DIMENSIONS ARE APPROXIMATE.
Floor plan supplied by V-Mark Design Pty Ltd. This floor plan is provided for indicative purposes only.
Measurements are approximate and not to scale. The vendor, agency and supplier will accept no liability
for its accuracy. Interested parties are advised to make their own independent enquiries.

NOONAN PROPERTY