



505/64 Castlereagh Street Sydney NSW

Noonan Property Sydney are pleased to present for sale Suite 505, Castlereagh Chambers, 64 Castlereagh Street, Sydney.

This exclusive property represents an exciting opportunity to acquire a boutique commercial suite comprising 53 sqm in one of Sydney's most prized commercial strata buildings with world famous neighbours including Bulgari at ground level, Hermès, Dior, Valentino, Chanel, Paspaley and Cartier.

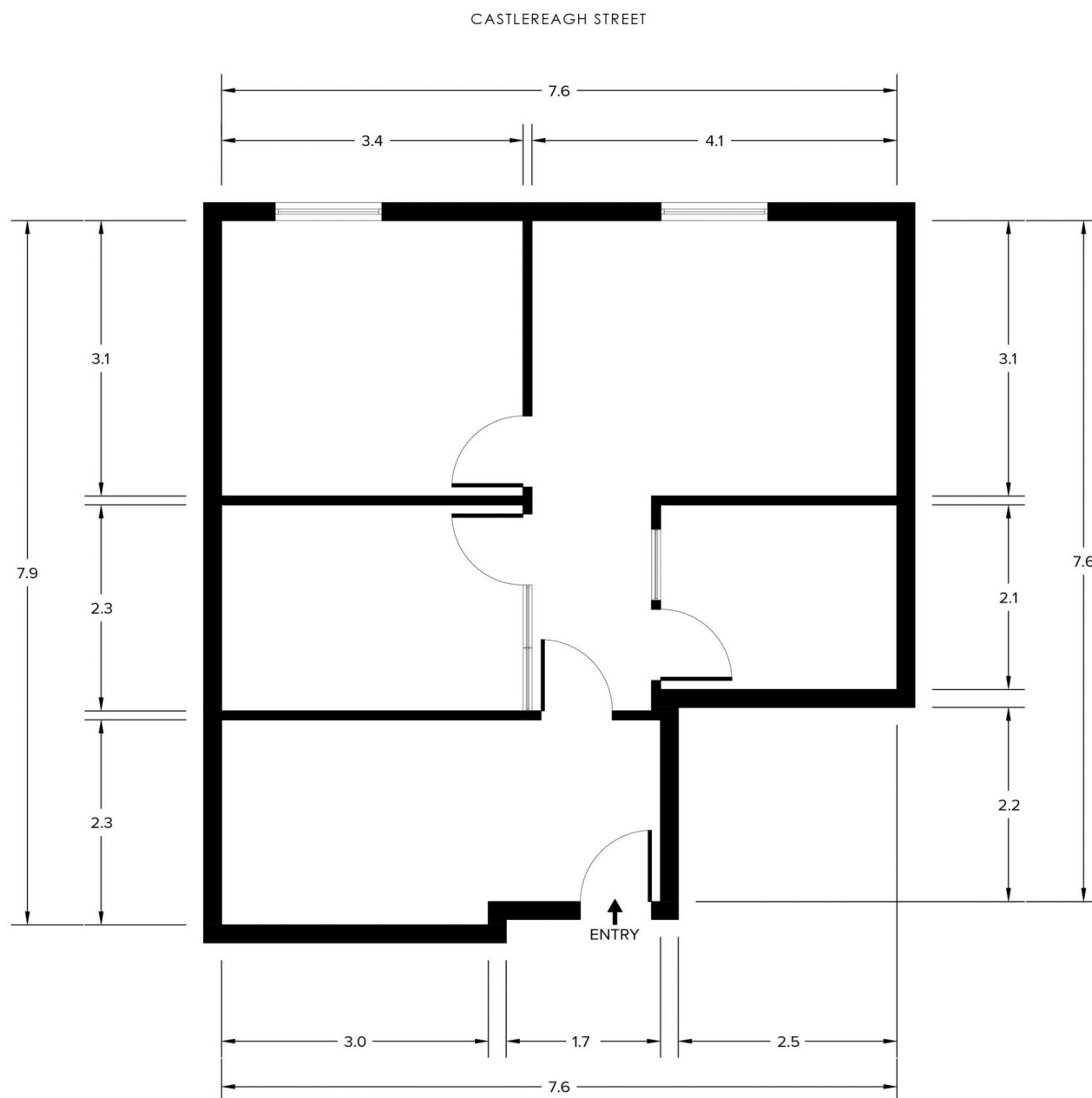
Suite 505 features front positioning on Level 5, high ceilings, security intercom access, an efficient floor plan and two large windows overlooking King and Castlereagh Streets providing excellent natural light and impressive views across to the MLC Centre.

Building Size : 53 sqm
Land Size : 53 sqm
View : <https://www.noonanproperty.com.au/sale/nsw/sydney-city/sydney/commercial/offices/7743140>



Tim Noonan
02 9231 6000

SUITE 505, CASTLEREAGH CHAMBERS
64 CASTLEREAGH STREET SYDNEY



*PLANS SHOWN ONLY INDICATIVE OF LAYOUT. DIMENSIONS ARE APPROXIMATE.
Floor plan supplied by V-Mark Design Pty Ltd. This floor plan is provided for indicative purposes only.
Measurements are approximate and not to scale. The vendor, agency and supplier will accept no liability
for its accuracy. Interested parties are advised to make their own independent enquiries.

NOONAN
PROPERTY