

502/70 Pitt Street Sydney NSW

Noonan Property are pleased to offer for lease this modern and impressive commercial suite comprising 65 sqm in a quality commercial building located at 70 Pitt Street, Sydney.

This superbly located property features modern interiors, high ceilings, forefront positioning, large windows, excellent natural light, prominent lift lobby exposure and attractive views overlooking Pitt Street.

Internally the property is presented with an open plan layout that could easily accommodate 8 workstations plus ancillary meeting spaces. The property also features easy access to kitchen and bathroom amenities.

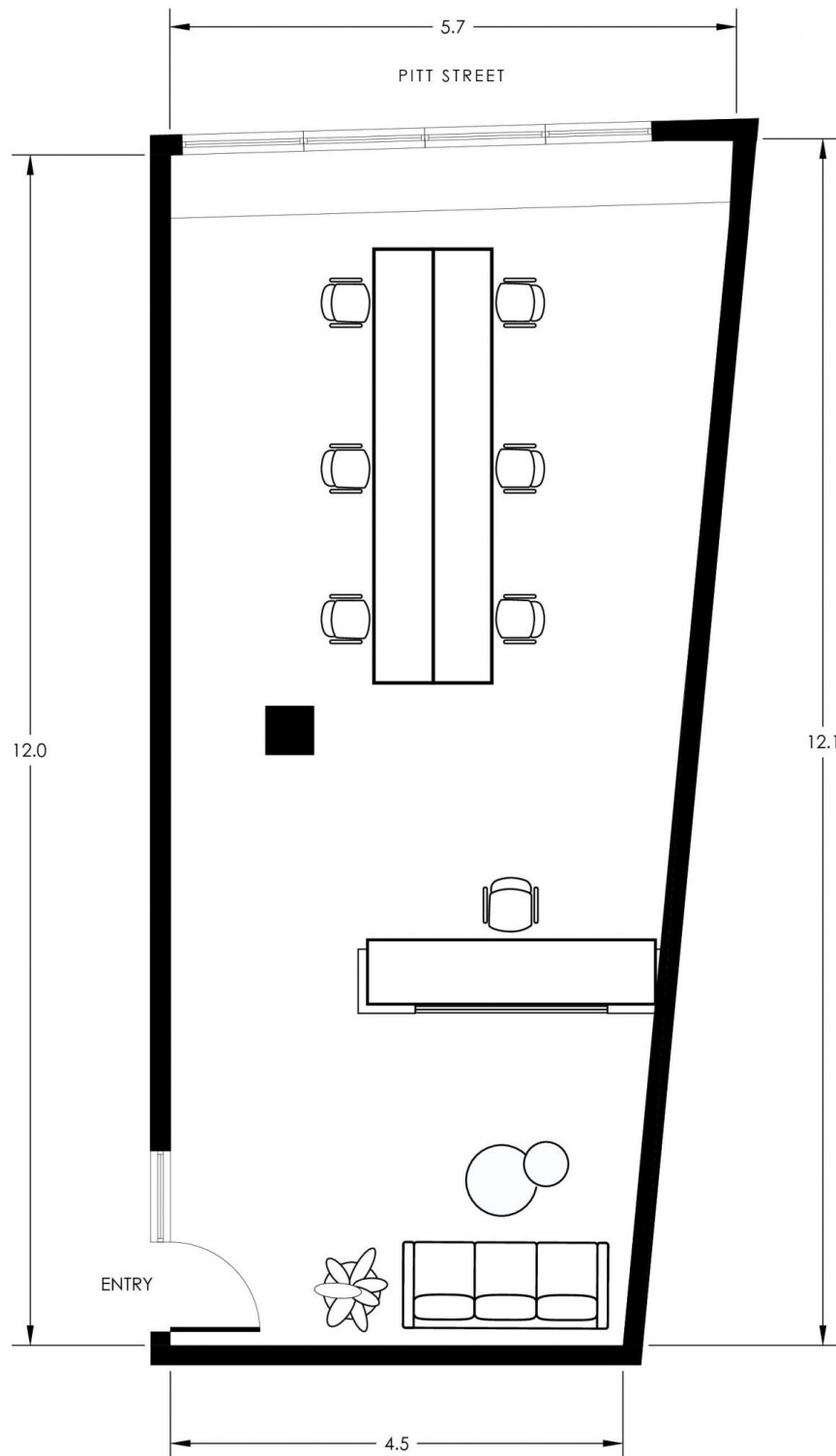
70 Pitt Street is a stylish and popular commercial building and the main lobby area is impressive and spacious with

Price : \$600/m2 Gross PA
Building Size : 65 sqm
Land Size : 65 sqm
View : <https://www.noonanproperty.com.au/lease/nsw/sydney-city/sydney/commercial/offices/7791213>



Tim Noonan
02 9231 6000

SUITE 502 70 PITT STREET SYDNEY



*PLANS SHOWN ONLY INDICATIVE OF LAYOUT. DIMENSIONS ARE APPROXIMATE.
Floor plan supplied by V-Mark Design Pty Ltd. This floor plan is provided for indicative purposes only.
Measurements are approximate and not to scale. The vendor, agency and supplier will accept no liability
for its accuracy. Interested parties are advised to make their own independent enquiries.

NOONAN PROPERTY