

## Level 9/22 Market Street Sydney NSW

Noonan Property Sydney are pleased to present for lease this modern and impressive whole floor commercial property comprising 475 sqm with harbour views in a quality commercial building located at 22 Market Street, Sydney.

This superbly located property features high ceilings, corner positioning, harbour views and extensive window frontages overlooking Market Street and Kent Street providing excellent natural light throughout the entire property.

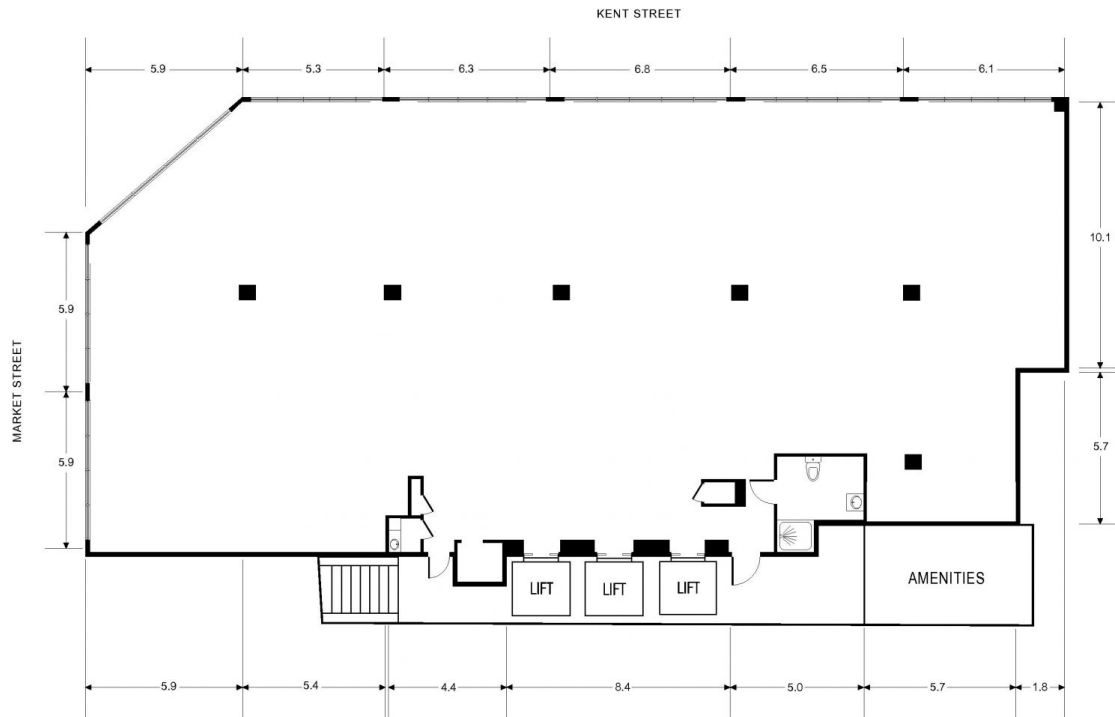
Internally the layout is open plan and ready for a new business to complete their perfect office fitout. The property also includes internal kitchen and bathroom facilities including a shower, ducted air conditioning and easy access to communal male and female bathroom amenities.

**Price** : \$575/m2 Gross PA  
**Building Size** : 475 sqm  
**Land Size** : 475 sqm  
**View** : <https://www.noonanproperty.com.au/lease/nsw/sydney-city/sydney/commercial/offices/7799899>



**Tim Noonan**  
**02 9231 6000**

LEVEL 9, 22 MARKET STREET SYDNEY



0 1 2 3 4 5  
SCALE (METRES)

Dimensions and layout are approximate.  
This floor plan is for marketing purposes only.  
V-Mark gives no guarantee or warranty over the accuracy of this plan.

**NOONAN  
PROPERTY**