



51 Drutt Street Sydney NSW

- Modern and impressive commercial suite
- Attractive views overlooking Darling Harbour
- Large windows and excellent natural light
- Versatile layout with three rooms included
- High ceilings and integrated storage space
- Popular commercial building with four lifts
- Striking main lobby area with marble tiling
- Exclusive location near Town Hall and QVB
- Close to World Square and Darling Harbour
- Surrounded by Sydney's finest restaurants

Size - 121 sqm approx.

Rental - \$495 per sqm gross per annum plus GST
(\$59,895 per annum plus GST)

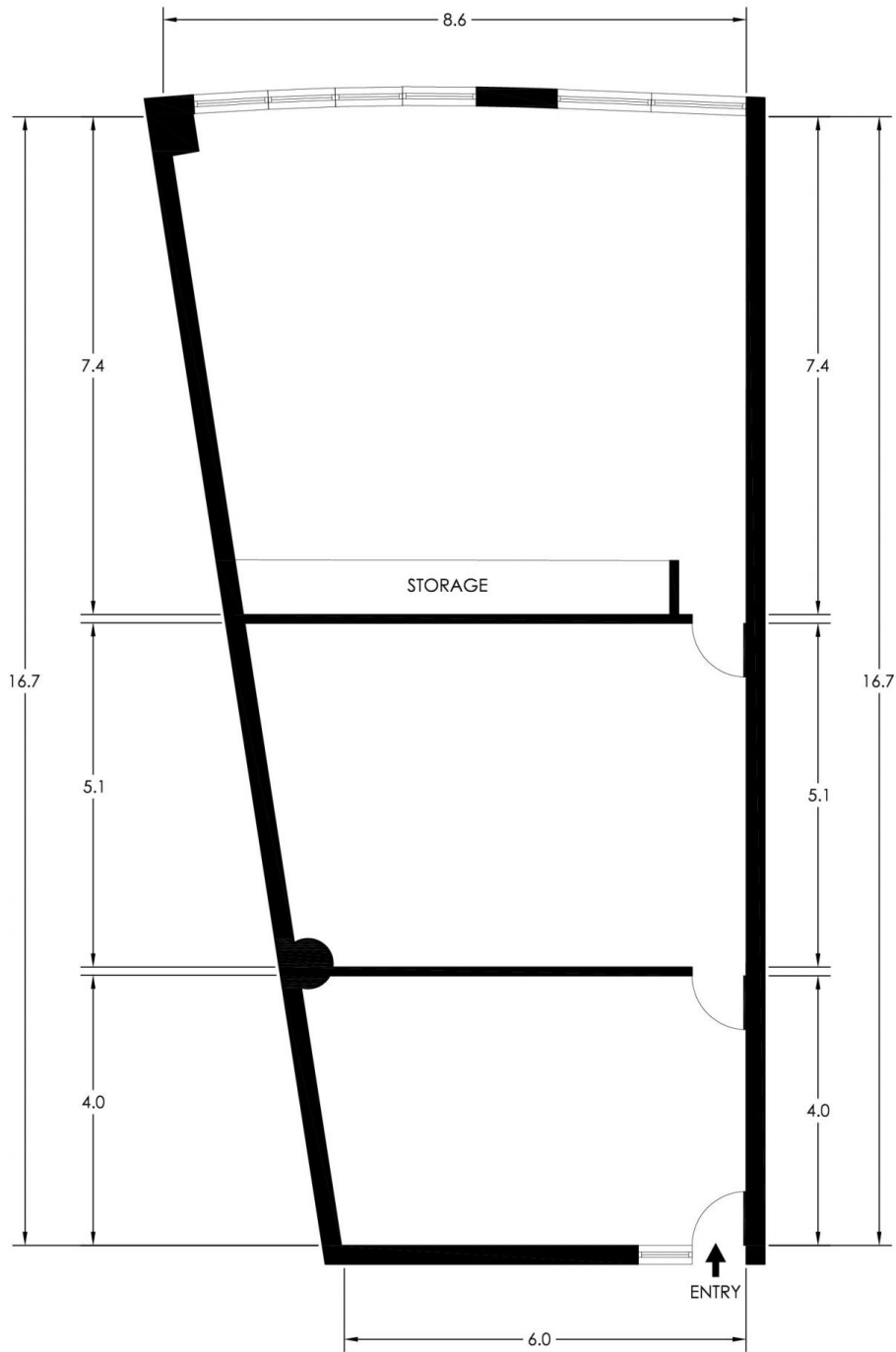
Tim Noonan

Price : \$495/m2 Gross PA
Building Size : 121 sqm
Land Size : 121 sqm
View : <https://www.noonanproperty.com.au/lease/nsw/sydney-city/sydney/commercial/offices/7816113>



Tim Noonan
02 9231 6000

SUITE 68 51 DRUITT STREET SYDNEY



*PLANS SHOWN ONLY INDICATIVE OF LAYOUT. DIMENSIONS ARE APPROXIMATE.
Floor plan supplied by V-Mark Design Pty Ltd. This floor plan is provided for indicative purposes only.
Measurements are approximate and not to scale. The vendor, agency and supplier will accept no liability
for its accuracy. Interested parties are advised to make their own independent enquiries.

NOONAN PROPERTY