



## 701-707/229 Macquarie Street Sydney NSW

Noonan Property Sydney are pleased to exclusively present for sale Suites 701-707, William Bland Centre, 229-231 Macquarie Street, Sydney.

This elite offering provides owner occupiers and investors with a once in a generational opportunity to acquire four adjoining commercial strata properties comprising 172 sqm with spectacular harbour views in a dress circle location near Hyde Park, Martin Place, Queen's Square and Wynyard.

The property's elevated and magnificent views overlooking Sydney Harbour, The Domain, Woolloomooloo, NSW Parliament House and Sydney Hospital are awe-inspiring and exclusive to a limited number of high-rise floors within the building.

**Price** : Contact Exclusive Agents  
**Building Size** : 172 sqm  
**Land Size** : 172 sqm  
**View** : <https://www.noonanproperty.com.au/sale/nsw/sydney-city/sydney/commercial/offices/7880276>

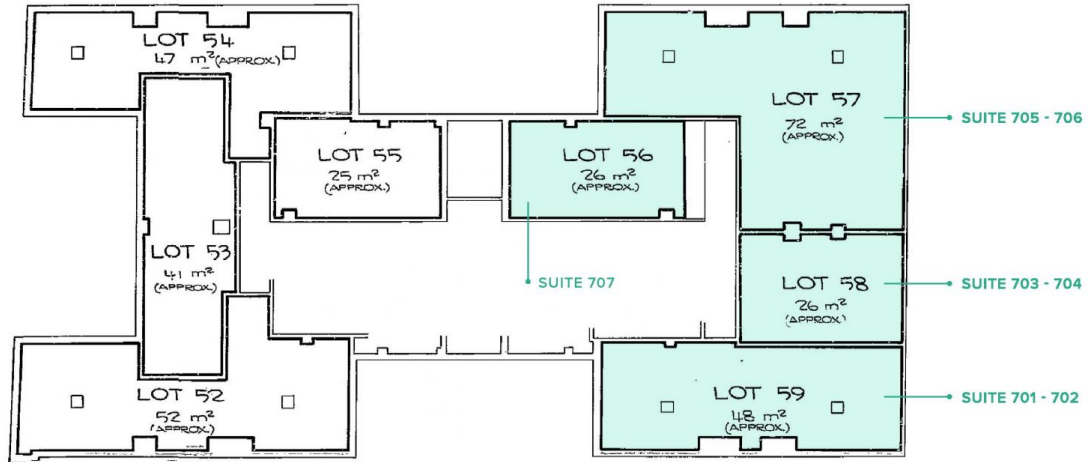


**Tim Noonan**  
02 9231 6000

# LEVEL 7/229 MACQUARIE STREET SYDNEY



SEVENTH FLOOR



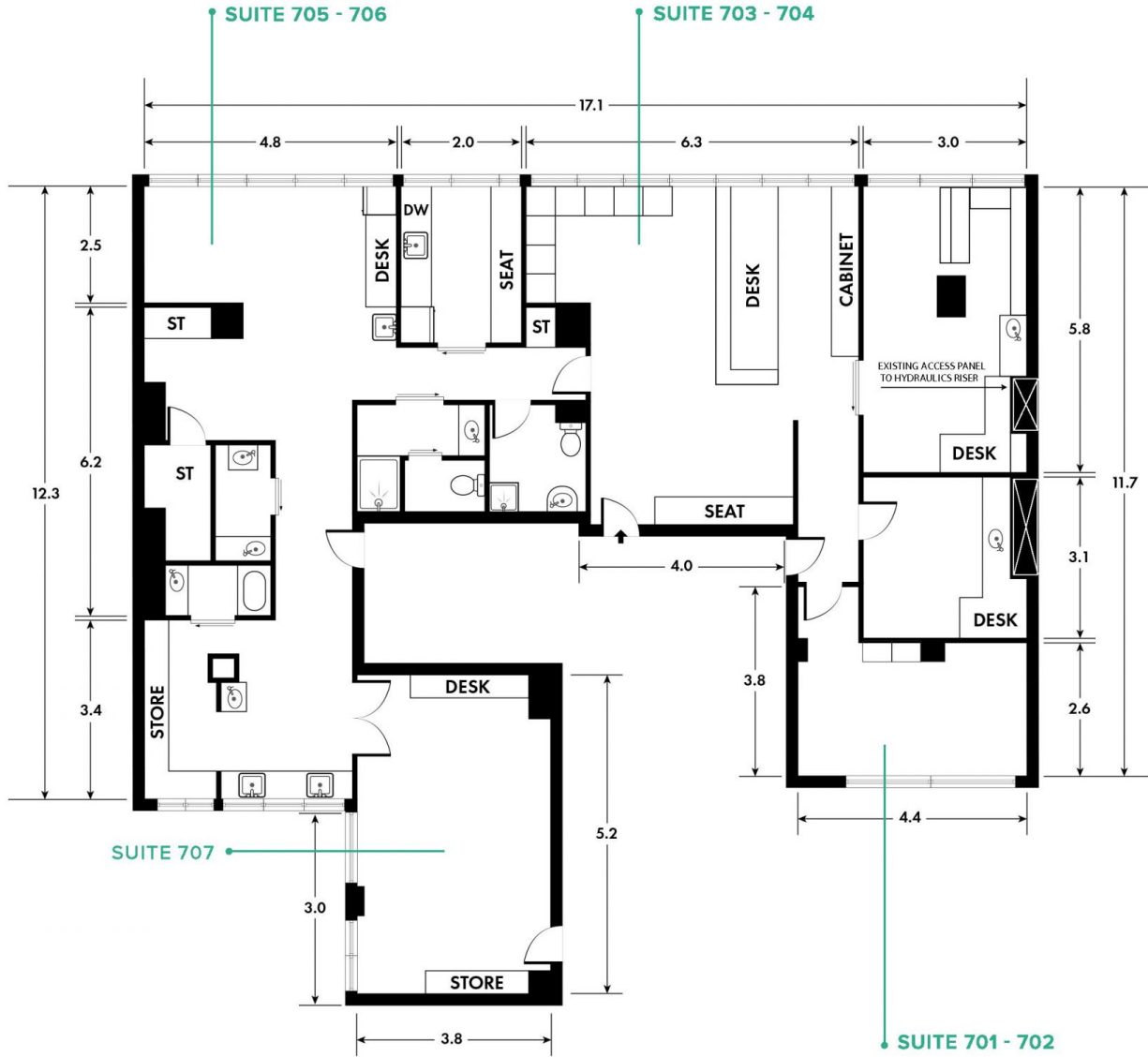
\*PLANS SHOWN ONLY INDICATIVE OF LAYOUT. DIMENSIONS ARE APPROXIMATE.  
Floor plan supplied by V.Mark Design Pty Ltd. This floor plan is provided for indicative purposes only.  
Measurements are approximate and not to scale. The vendor, agency and supplier will accept no liability  
for its accuracy. Interested parties are advised to make their own independent enquiries.

## NOONAN PROPERTY

# LEVEL 7/229 MACQUARIE STREET SYDNEY



MACQUARIE STREET



\*PLANS SHOWN ONLY INDICATIVE OF LAYOUT. DIMENSIONS ARE APPROXIMATE.  
Floor plan supplied by V-Mark Design Pty Ltd. This floor plan is provided for indicative purposes only. Measurements are approximate and not to scale. The vendor, agency and supplier will accept no liability for its accuracy. Interested parties are advised to make their own independent enquiries.

## NOONAN PROPERTY