

## 1003/250 Pitt Street Sydney NSW

Noonan Property are pleased to present for sale Suite 1003, Ashington Place, 250 Pitt Street, Sydney.

This premium offering represents an exciting opportunity to acquire one of Sydney's most exclusive commercial strata properties comprising 46 sqm in a highly coveted location near Town Hall, Martin Place, Hyde Park, World Square and the highly anticipated Gadigal Station (formerly Pitt Street Metro Station) development, which is scheduled to open in 2024.

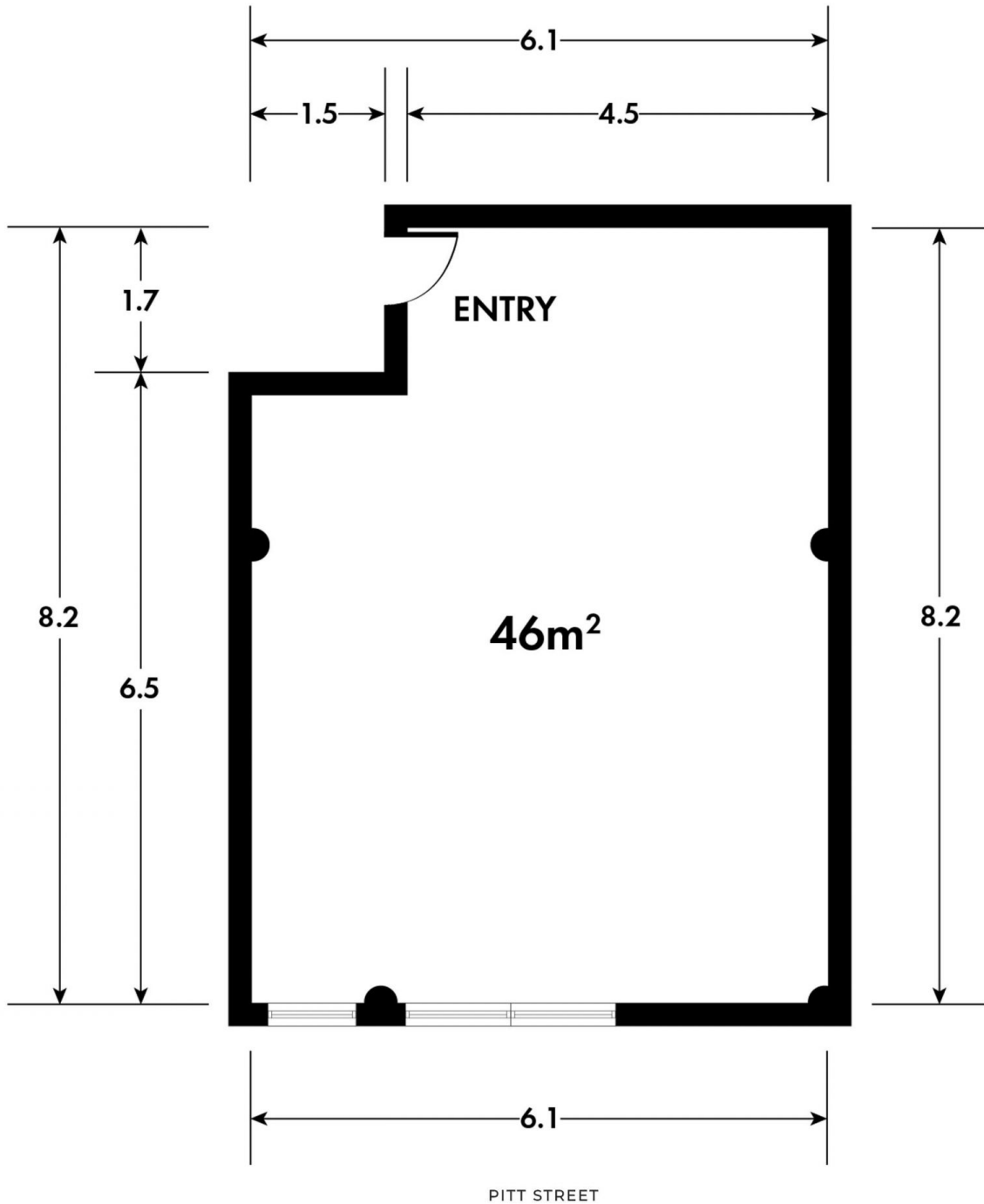
Suite 1003 features prime sub-penthouse positioning on Level 10, high ceilings, polished timber flooring, pendant lighting, large windows, expansive city skyline views with glimpses of Town Hall and the Queen Victoria Building and excellent natural light throughout the entire property.

**Price** : Guide \$775,000  
**Building Size** : 46 sqm  
**Land Size** : 46 sqm  
**View** : <https://www.noonanproperty.com.au/sale/nsw/sydney-city/sydney/commercial/offices/7891413>



**Tim Noonan**  
02 9231 6000

SUITE 1003 250 PITT STREET  
SYDNEY



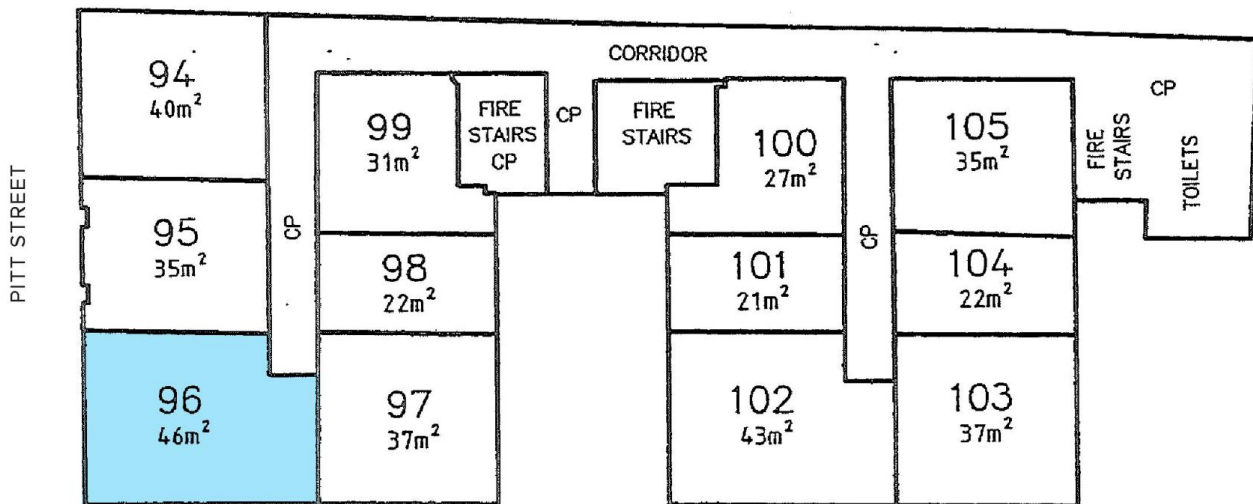
\*PLANS SHOWN ONLY INDICATIVE OF LAYOUT. DIMENSIONS ARE APPROXIMATE.  
Floor plan supplied by V-Mark Design Pty Ltd. This floor plan is provided for indicative purposes only. Measurements are approximate and not to scale. The vendor, agency and supplier will accept no liability for its accuracy. Interested parties are advised to make their own independent enquiries.

**NOONAN**  
**PROPERTY**

# SUITE 1003 250 PITT STREET SYDNEY



LEVEL TEN



\*PLANS SHOWN ONLY INDICATIVE OF LAYOUT. DIMENSIONS ARE APPROXIMATE.  
Floor plan supplied by V-Mark Design Pty Ltd. This floor plan is provided for indicative purposes only. Measurements are approximate and not to scale. The vendor, agency and supplier will accept no liability for its accuracy. Interested parties are advised to make their own independent enquiries.

## NOONAN PROPERTY