

705/65 York Street Sydney NSW

Noonan Property Sydney are pleased to present for sale Suite 705, 65 York Street, Sydney.

This premium offering represents an exciting opportunity to acquire one of Sydney's most exclusive commercial strata properties comprising 125 sqm in a prestigious location near Wynyard, Martin Place and Barangaroo.

Suite 705 features prime corner positioning on Level 7 with a 23 metre frontage, high ceilings, prominent lift lobby exposure and expansive windows providing excellent natural light throughout the entire property along with attractive and expansive cityscape views.

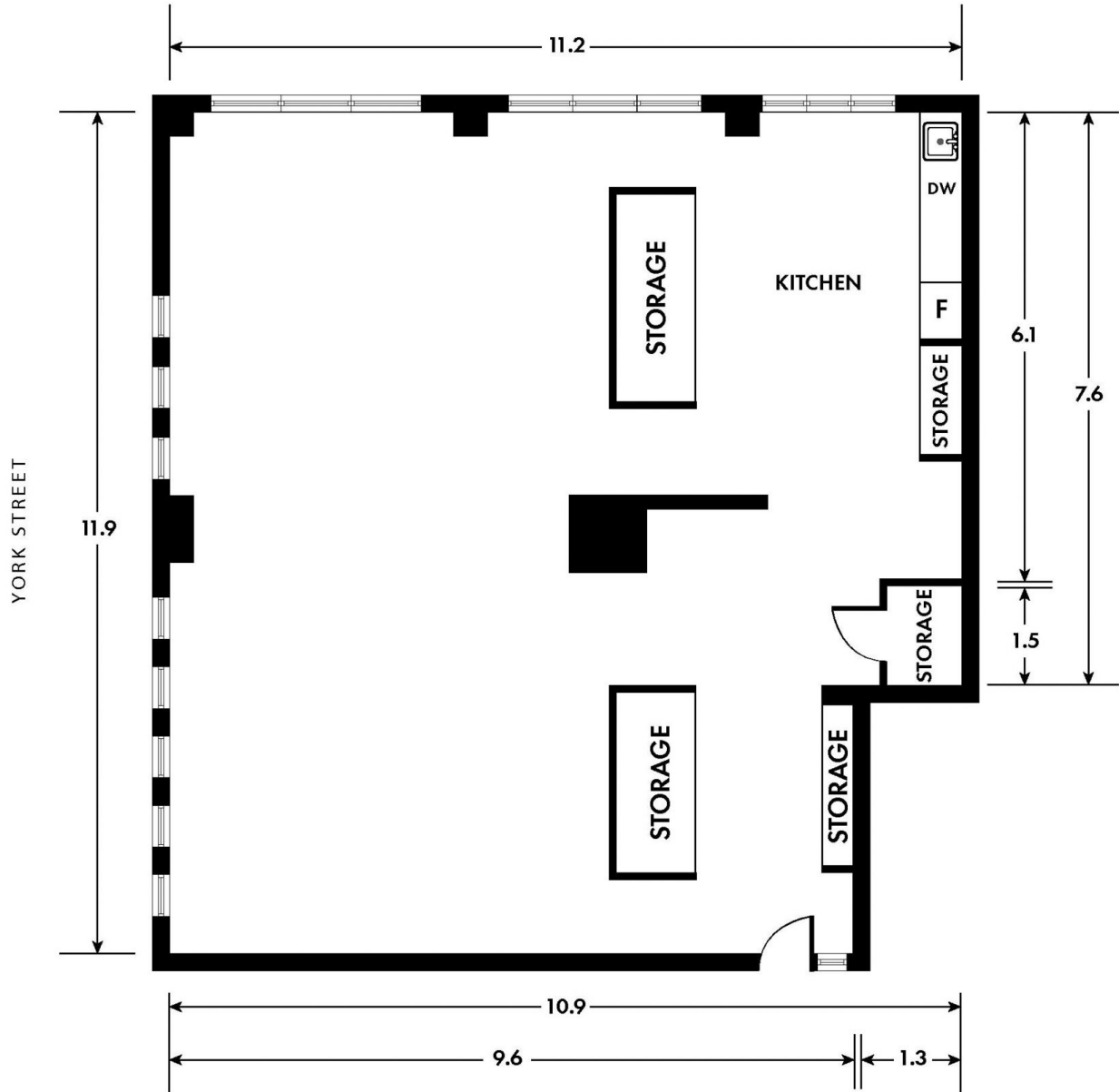
Internally the property features a stylish and modern fitout incorporating spacious open plan work areas and multiple workstations. The property is suitable for a variety of

| | |
|----------------------|---|
| Price | : Under Offer |
| Building Size | : 125 sqm |
| Land Size | : 125 sqm |
| View | : https://www.noonanproperty.com.au/sale/nsw/sydney-city/sydney/commercial/offices/7905055 |



Tim Noonan
02 9231 6000

SUITE 705, 65 YORK STREET SYDNEY



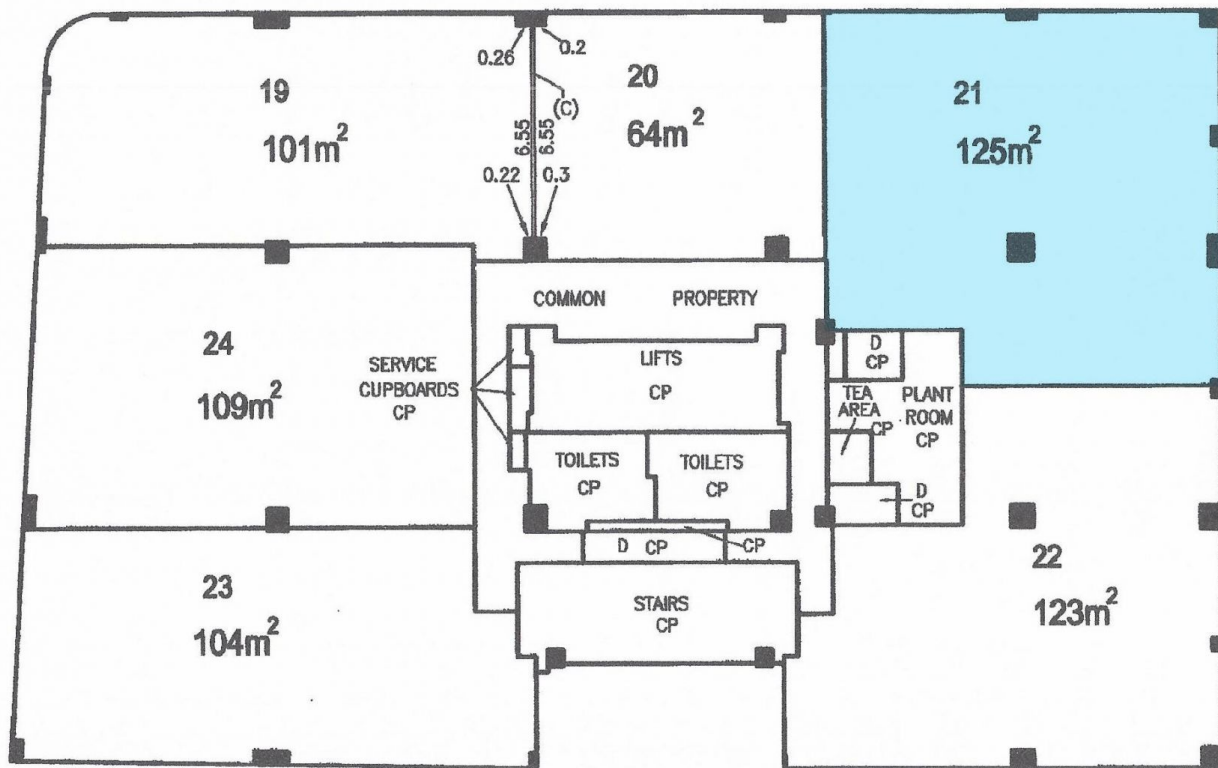
*PLANS SHOWN ONLY INDICATIVE OF LAYOUT. DIMENSIONS ARE APPROXIMATE.
Floor plan supplied by V-Mark Design Pty Ltd. This floor plan is provided for indicative purposes only. Measurements are approximate and not to scale. The vendor, agency and supplier will accept no liability for its accuracy. Interested parties are advised to make their own independent enquiries.

NOONAN
PROPERTY



LEVEL 7

YORK STREET



*PLANS SHOWN ONLY INDICATIVE OF LAYOUT. DIMENSIONS ARE APPROXIMATE.
Floor plan supplied by V-Mark Design Pty Ltd. This floor plan is provided for indicative purposes only. Measurements are approximate and not to scale. The vendor, agency and supplier will accept no liability for its accuracy. Interested parties are advised to make their own independent enquiries.