



## Level 4/82 Elizabeth Street Sydney NSW

Noonan Property are pleased to present for sale Level 4, 82 Elizabeth Street, Sydney.

This premium offering represents an exciting opportunity to acquire a stylishly renovated whole floor commercial property comprising 215 sqm with excellent natural light in a prestigious location near Queen's Square, Hyde Park and the highly anticipated Martin Place Metro Station development, which is scheduled to open in 2024.

Level 4 features a highly efficient and easily subdividable floor plan, whole floor positioning and dual window frontages providing excellent natural light throughout the entire property along with attractive views overlooking Elizabeth Street.

Internally the property features a stylish and

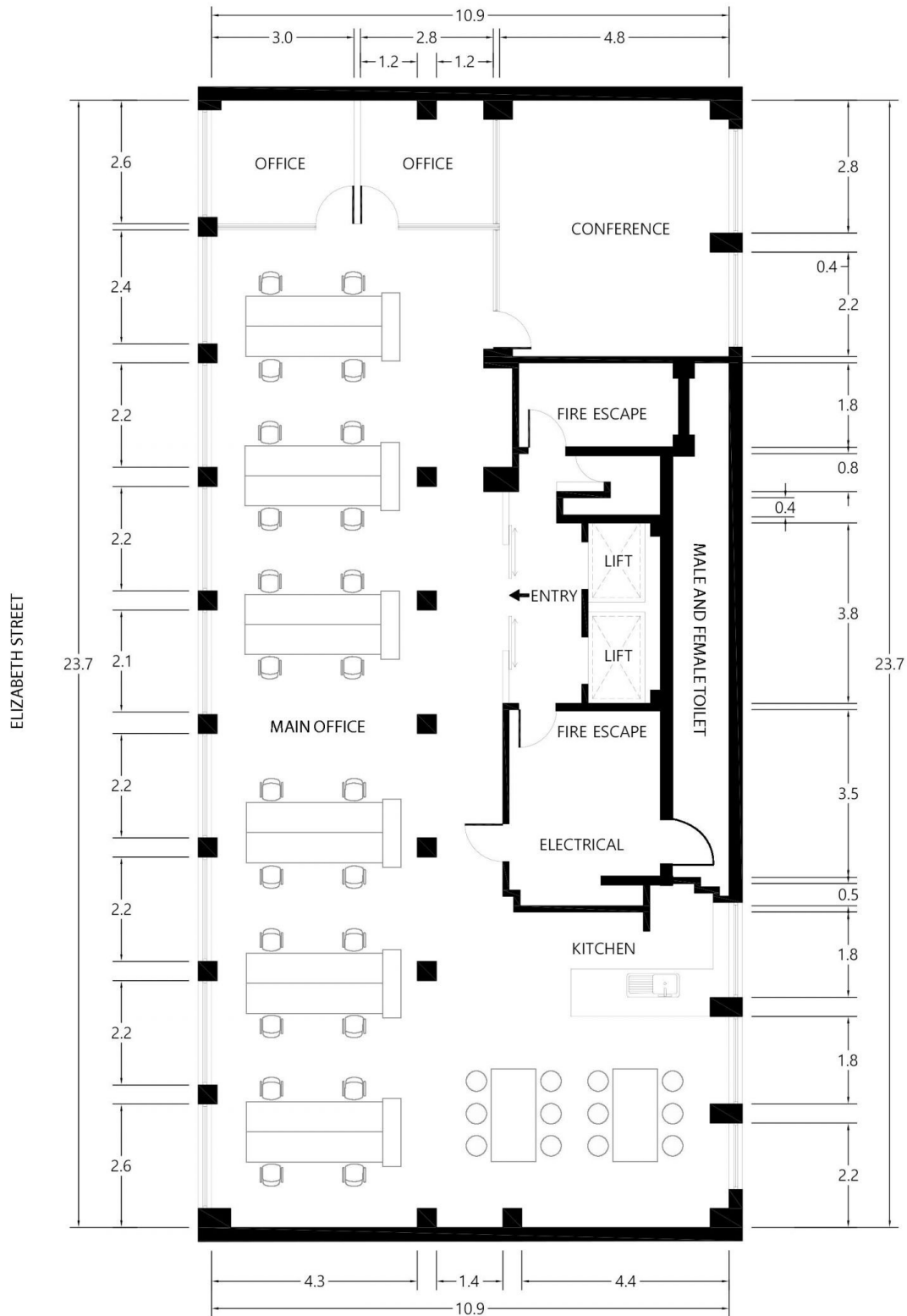
**Price** : \$2,675,000  
**Building Size** : 215 sqm  
**Land Size** : 215 sqm  
**View** : <https://www.noonanproperty.com.au/sale/nsw/sydney-city/sydney/commercial/offices/7905648>



**Tim Noonan**  
**02 9231 6000**

# LEVEL 4

## 82 ELIZABETH STREET SYDNEY



\*PLANS SHOWN ONLY INDICATIVE OF LAYOUT. DIMENSIONS ARE APPROXIMATE.  
 Floor plan supplied by V-Mark Design Pty Ltd. This floor plan is provided for indicative purposes only.  
 Measurements are approximate and not to scale. The vendor, agency and supplier will accept no liability

**NOONAN**  
**PROPERTY**