



## 450/311 Castlereagh Street Sydney NSW

2 

Noonan Property Sydney are pleased to present for sale Suite 450, 311 Castlereagh Street, Sydney.

This exclusive offering represents a rare opportunity to acquire a high quality commercial strata property comprising 151 sqm plus a double lock up garage comprising 33 sqm in a prestigious location near Museum Station, Central Station, World Square, Town Hall and Haymarket.

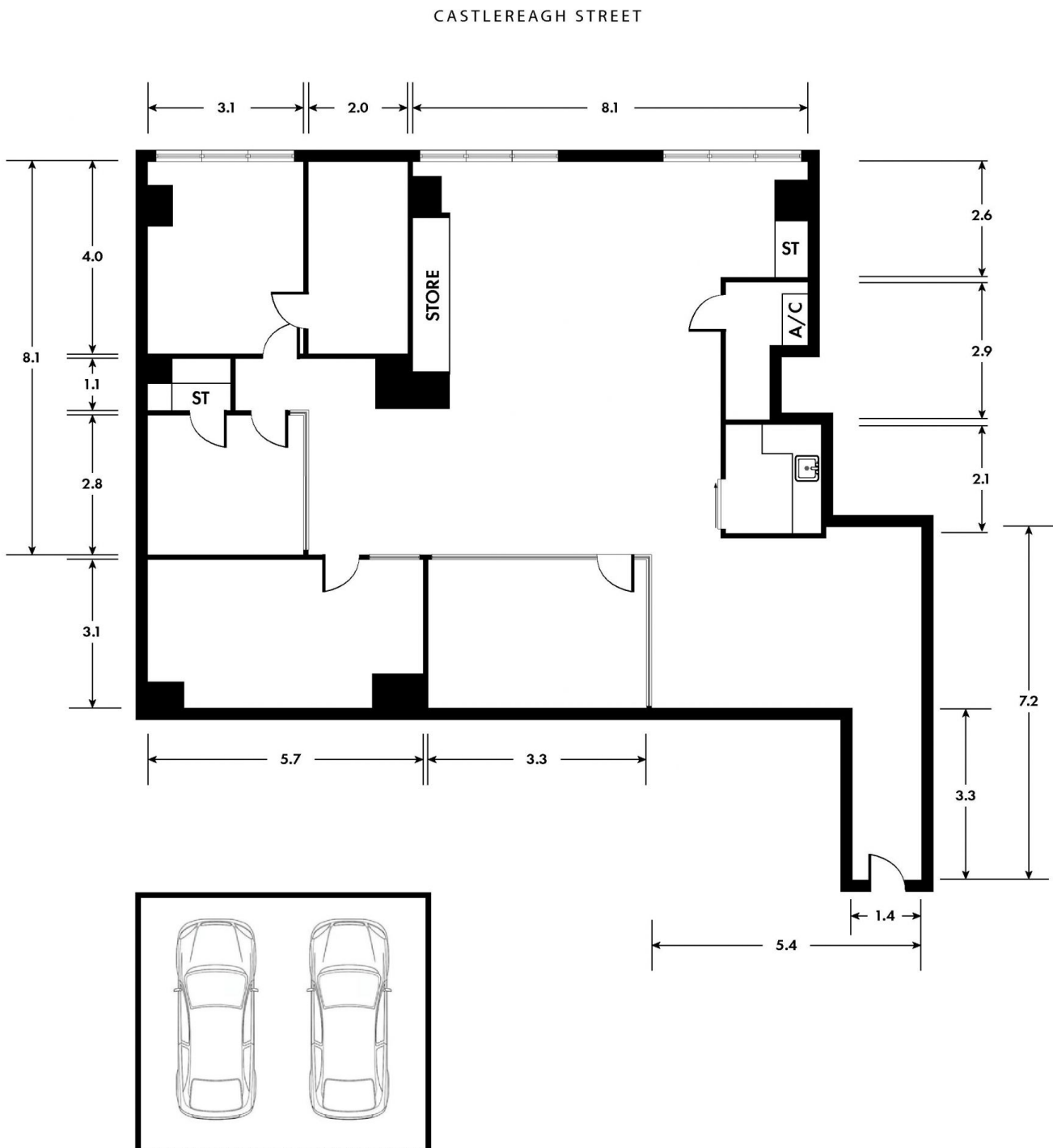
Suite 450 features front positioning on Level 5 with an easterly aspect, high ceilings, two car spaces within a lock up garage and large floor to ceiling glass windows overlooking Castlereagh Street providing excellent natural light throughout the entire property along with attractive leafy views.

**Price** : Guide \$1,500,000  
**Building Size** : 184 sqm  
**Land Size** : 184 sqm  
**View** : <https://www.noonanproperty.com.au/sale/nsw/sydney-city/sydney/commercial/offices/7906668>



**Tim Noonan**  
02 9231 6000

# SUITE 450, 311 CASTLEREAGH STREET SYDNEY



\*PLANS SHOWN ONLY INDICATIVE OF LAYOUT. DIMENSIONS ARE APPROXIMATE.

Floor plan supplied by V-Mark Design Pty Ltd. This floor plan is provided for indicative purposes only. Measurements are approximate and not to scale. The vendor, agency and supplier will accept no liability for its accuracy. Interested parties are advised to make their own independent enquiries.

**NOONAN**  
**PROPERTY**