



## 1302/370 Pitt Street Sydney NSW

Noonan Property are pleased to present for sale Suite 1302, The Chambers, 370 Pitt Street, Sydney.

This premium offering represents an exciting opportunity to acquire a quality commercial strata property comprising 87 sqm in a popular location opposite World Square and close to Hyde Park, Town Hall, Haymarket and Museum Station.

Suite 1302 features high-rise positioning on Level 13, high ceilings, prominent lift lobby exposure and large windows providing excellent natural light throughout the entire property. The property also features expansive city skyline views incorporating landmark buildings including the HSBC Centre, Century Tower and World Square.

Internally the property is fitted out for a travel business with a mixture of offices, meeting rooms, storage and open plan

**Price** : Guide \$870,000  
**Building Size** : 87 sqm  
**Land Size** : 87 sqm  
**View** : <https://www.noonanproperty.com.au/sale/nsw/sydney-city/sydney/commercial/offices/7916106>

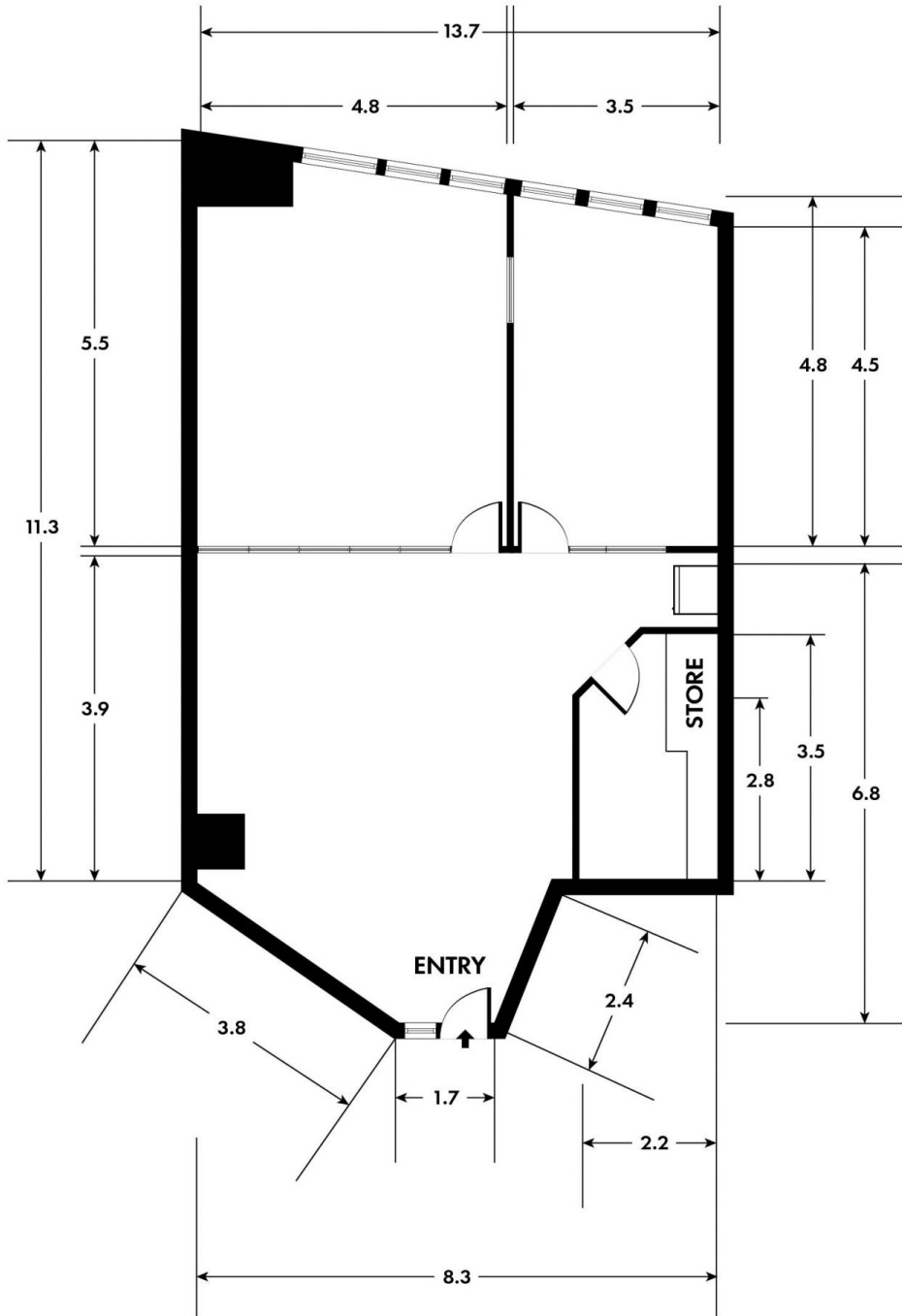


**Tim Noonan**  
02 9231 6000

# SUITE 1302/370 PITT STREET SYDNEY



PITT STREET



\*PLANS SHOWN ONLY INDICATIVE OF LAYOUT. DIMENSIONS ARE APPROXIMATE.  
Floor plan supplied by V-Mark Design Pty Ltd. This floor plan is provided for indicative purposes only. Measurements are approximate and not to scale. The vendor, agency and supplier will accept no liability for its accuracy. Interested parties are advised to make their own independent enquiries.

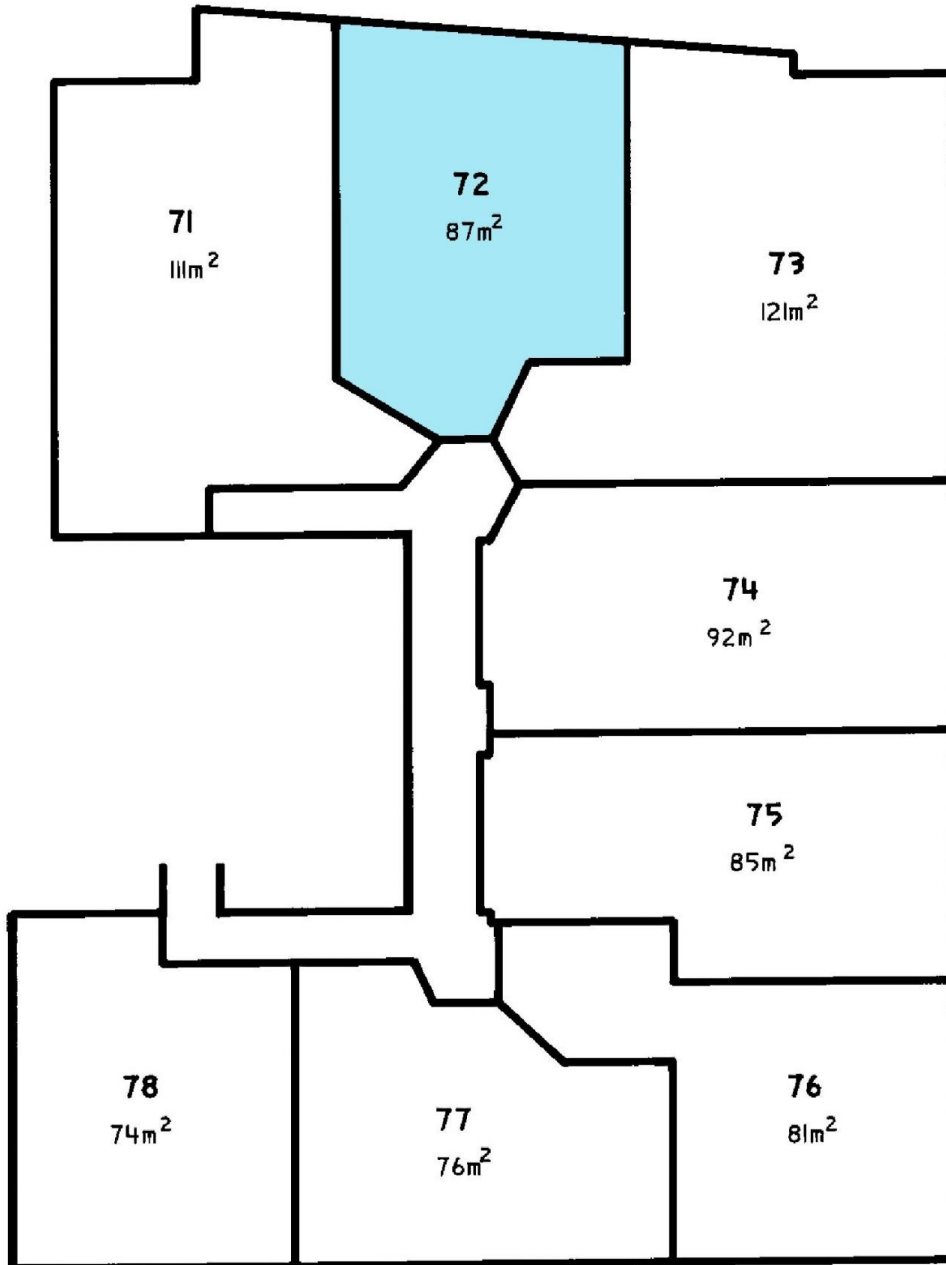
## NOONAN PROPERTY

# SUITE 1302/370 PITT STREET SYDNEY



LEVEL 13

PITT STREET



\*PLANS SHOWN ONLY INDICATIVE OF LAYOUT. DIMENSIONS ARE APPROXIMATE.  
Floor plan supplied by V-Mark Design Pty Ltd. This floor plan is provided for indicative purposes only. Measurements are approximate and not to scale. The vendor, agency and supplier will accept no liability for its accuracy. Interested parties are advised to make their own independent enquiries.

**NOONAN**  
**PROPERTY**