



8/7 Bridge Street Sydney NSW

- Striking fitout with bespoke furniture
- Professional and inspired workspace
- Stylishly renovated with quality finishes
- High ceilings maximising light and space
- Timber floors and LED pendant lighting
- Large boardroom with audio visual display
- 3 extra meeting rooms or executive offices
- Open plan area suitable for 10 workspaces
- Internal kitchen with integrated storage
- Admired and iconic commercial building
- Grand entranceway with stately finishes
- Dress circle location near Circular Quay
- Close walk to Wynyard and Martin Place
- Positioned opposite ASX and Mr Wongs

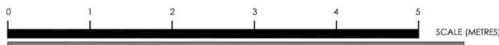
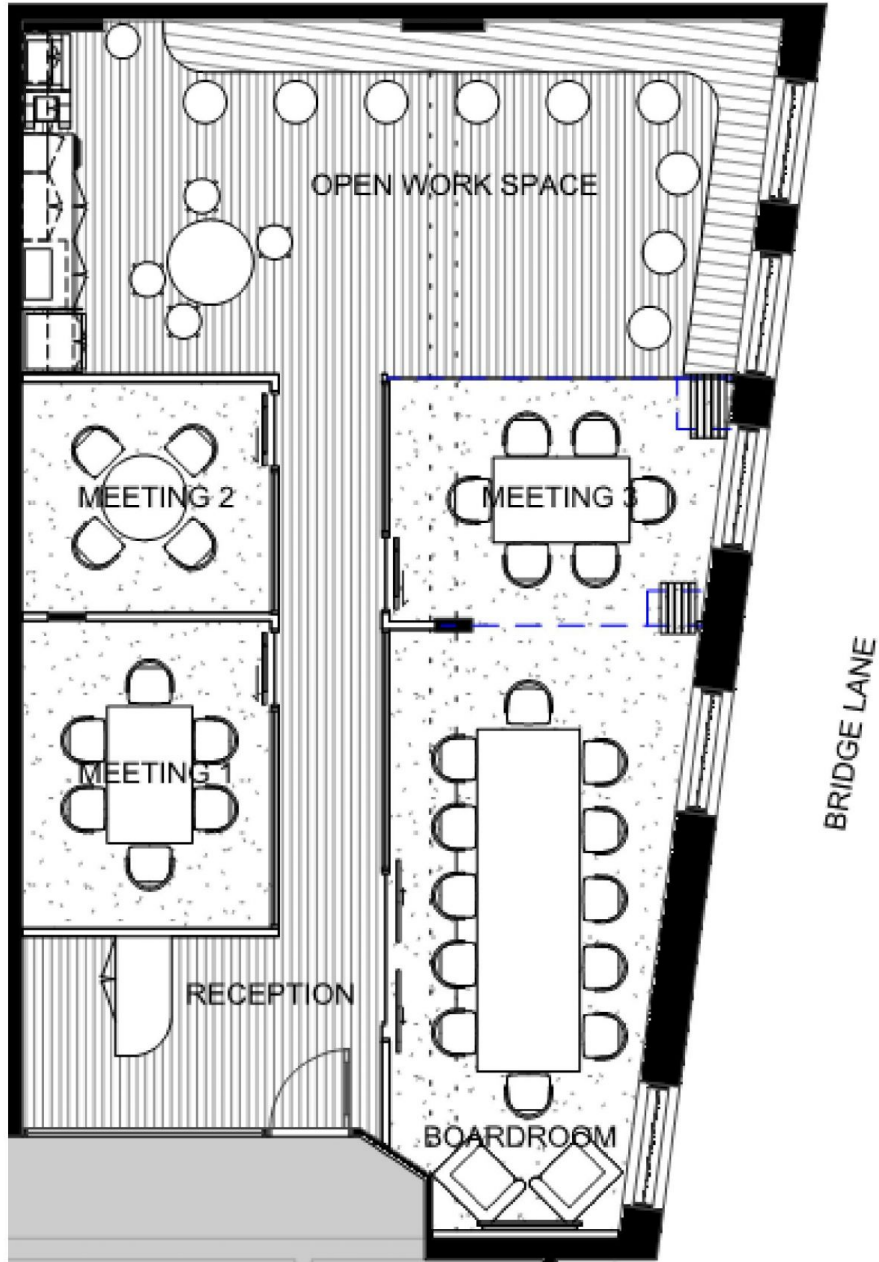
Size - 105 sqm approx.

Price : \$1050/m2 Gross PA
Building Size : 105 sqm
Land Size : 105 sqm
View : <https://www.noonanproperty.com.au/lease/nsw/sydney-city/sydney/commercial/offices/7916820>



Tim Noonan
02 9231 6000

SUITE 8, 7 BRIDGE STREET SYDNEY



*PLANS SHOWN ONLY INDICATIVE OF LAYOUT. DIMENSIONS ARE APPROXIMATE.
Floor plan supplied by V-Mark Design Pty Ltd. This floor plan is provided for indicative purposes only.
Measurements are approximate and not to scale. The vendor, agency and supplier will accept no liability
for its accuracy. Interested parties are advised to make their own independent enquiries.

NOONAN
PROPERTY