



Level 11/60 Park Street Sydney NSW

Noonan Property Sydney are pleased to present for sale Level 11, 60 Park Street, Sydney.

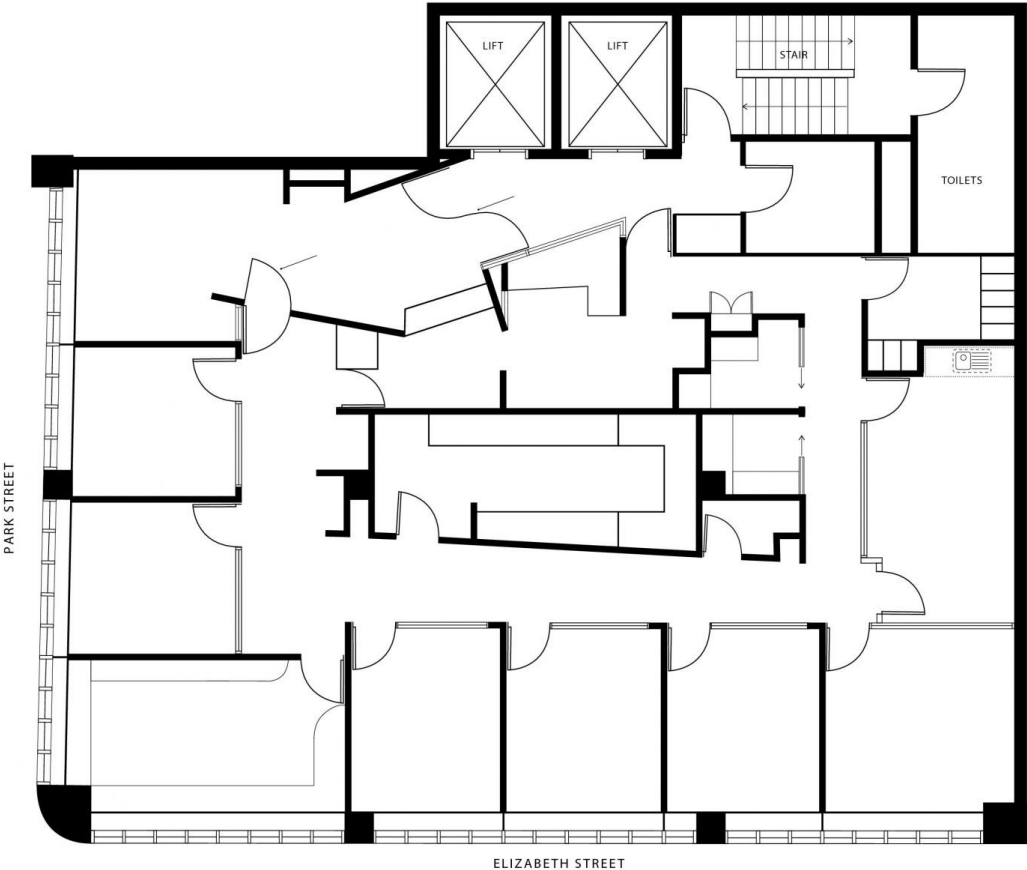
This spectacular offering provides owner occupiers and investors with a rare opportunity to acquire one of Australia's most prestigious commercial strata properties comprising 220 sqm with world class views and prime corner positioning in a dress circle location near Town Hall, Hyde Park, World Square and the highly anticipated Gadigal Station (formerly Pitt Street Metro Station) development, which is scheduled to open in 2024.

Level 11 features sub-penthouse whole floor positioning, high ceilings and a unique corner window frontage providing excellent natural light throughout the entire property. The property's elevated and magnificent views overlooking Hyde Park and Sydney Harbour are

Price	: Contact Agent
Building Size	: 220 sqm
Land Size	: 220 sqm
View	: https://www.noonanproperty.com.au/sale/nsw/sydney-city/sydney/commercial/offices/7939195



Tim Noonan
02 9231 6000



NOONAN
PROPERTY