



## 102/234 George Street Sydney NSW

Noonan Property are pleased to offer for lease this boutique and impressive commercial suite comprising 51 sqm in a highly coveted location between Circular Quay and Wynyard.

This superbly located property features large windows overlooking George Street and Grosvenor Street, which provides attractive tree line views and excellent natural light throughout the entire premises.

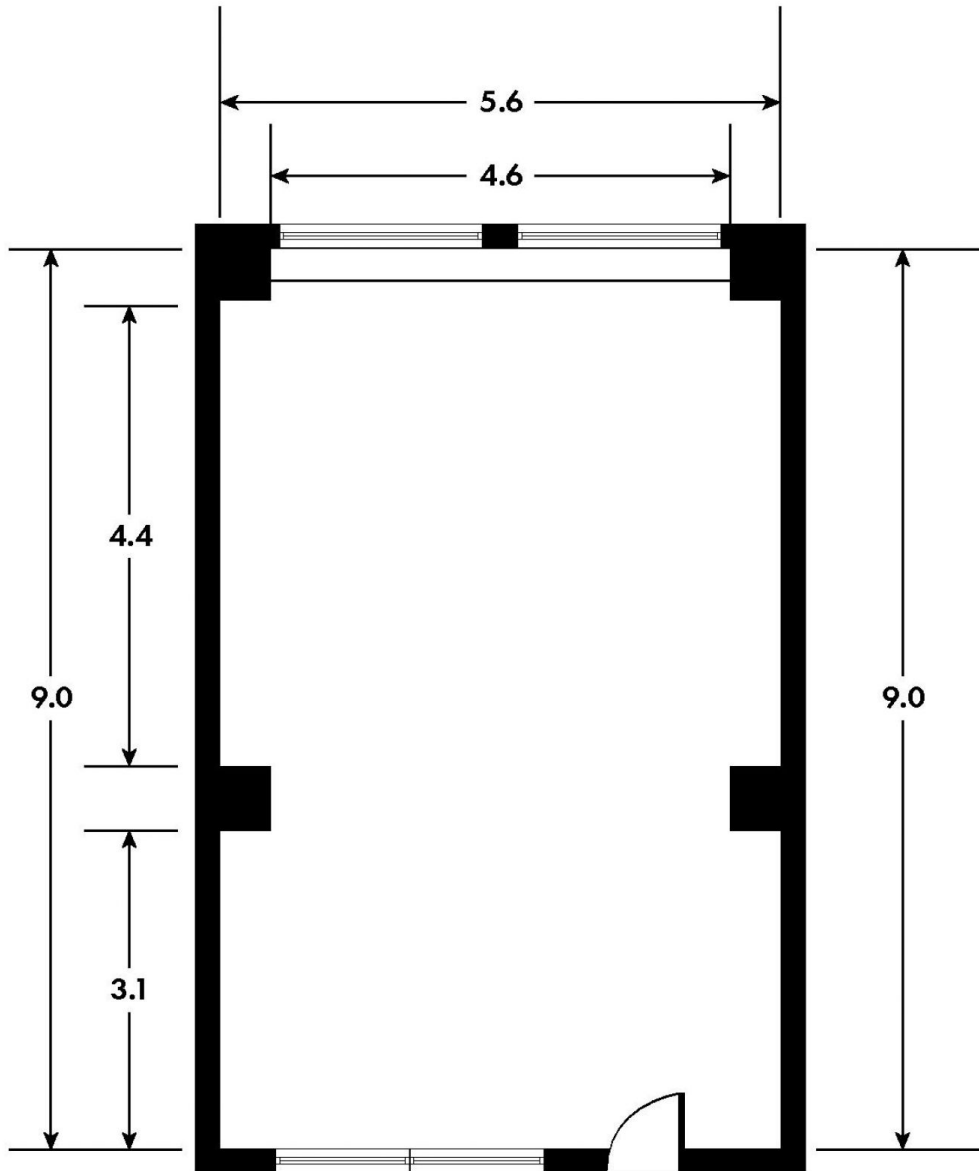
Internally the property is presented with an open plan layout that could easily accommodate 8 workstations plus ancillary meeting spaces. The property also features easy access to kitchen and bathroom amenities.

234 George Street, Sydney is one of Sydney's most popular and prestigious office buildings with a commanding

**Price** : \$750/m2 Gross PA  
**Building Size** : 51 sqm  
**Land Size** : 51 sqm  
**View** : <https://www.noonanproperty.com.au/lease/nsw/sydney-city/sydney/commercial/offices/7946034>



**Tim Noonan**  
02 9231 6000



\*PLANS SHOWN ONLY INDICATIVE OF LAYOUT. DIMENSIONS ARE APPROXIMATE.  
Floor plan supplied by V-Mark Design Pty Ltd. This floor plan is provided for indicative purposes only. Measurements are approximate and not to scale. The vendor, agency and supplier will accept no liability for its accuracy. Interested parties are advised to make their own independent enquiries.