



1001/234 George Street Sydney NSW

Noonan Property are pleased to offer for lease this modern, bright and impressive commercial suite comprising 103 sqm in a highly coveted location between Circular Quay and Wynyard.

This superbly located property features prime corner positioning and large windows overlooking George Street and Bridge Street, providing expansive city views and excellent natural light throughout the entire premises.

Internally the property features a versatile fitout incorporating meeting rooms or executive offices, integrated storage and a spacious open plan area for multiple workstations. The property also features easy access to on-floor kitchen and bathroom amenities.

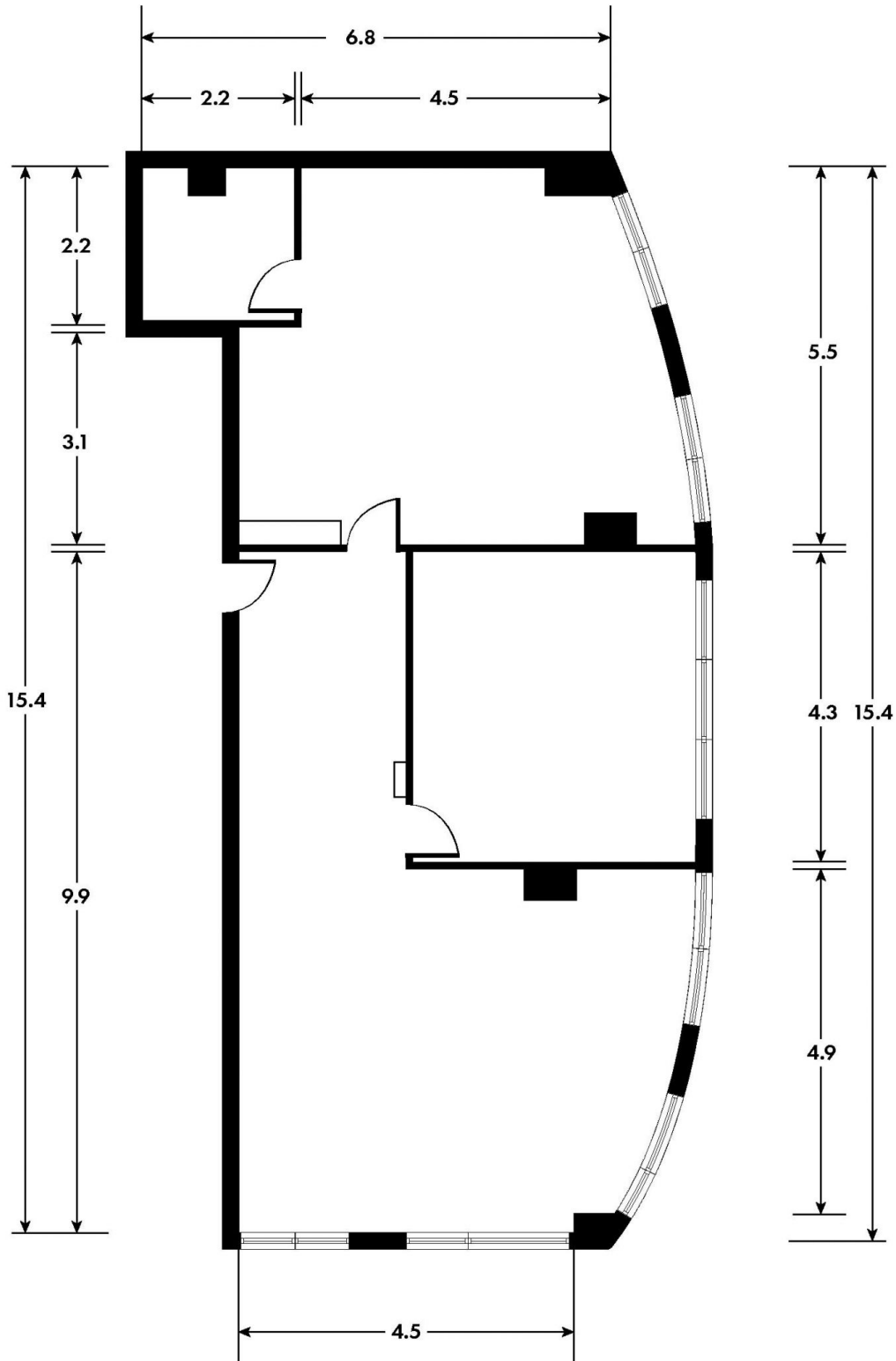
234 George Street, Sydney is one of Sydney's most

Price : \$750/m2 Gross PA
Building Size : 103 sqm
Land Size : 103 sqm
View : <https://www.noonanproperty.com.au/lease/nsw/sydney-city/sydney/commercial/offices/7946149>



Tim Noonan
02 9231 6000

SUITE 1001, 234 GEORGE STREET, SYDNEY



*PLANS SHOWN ONLY INDICATIVE OF LAYOUT. DIMENSIONS ARE APPROXIMATE.
Floor plan supplied by V-Mark Design Pty Ltd. This floor plan is provided for indicative purposes only. Measurements are approximate and not to scale. The vendor, agency and supplier will accept no liability for its accuracy. Interested parties are advised to make their own independent enquiries.

NOONAN PROPERTY