



## 450/311 Castlereagh Street Sydney NSW

2 

Noonan Property are pleased to offer for lease this high quality commercial suite comprising 151 sqm plus a double lock up garage comprising 33 sqm in a prestigious location near Museum Station, Central Station, World Square, Town Hall and Haymarket.

Suite 450 features front positioning on Level 5 with an easterly aspect, high ceilings, two car spaces within a lock up garage and large floor to ceiling glass windows overlooking Castlereagh Street providing excellent natural light throughout the entire property along with attractive leafy views.

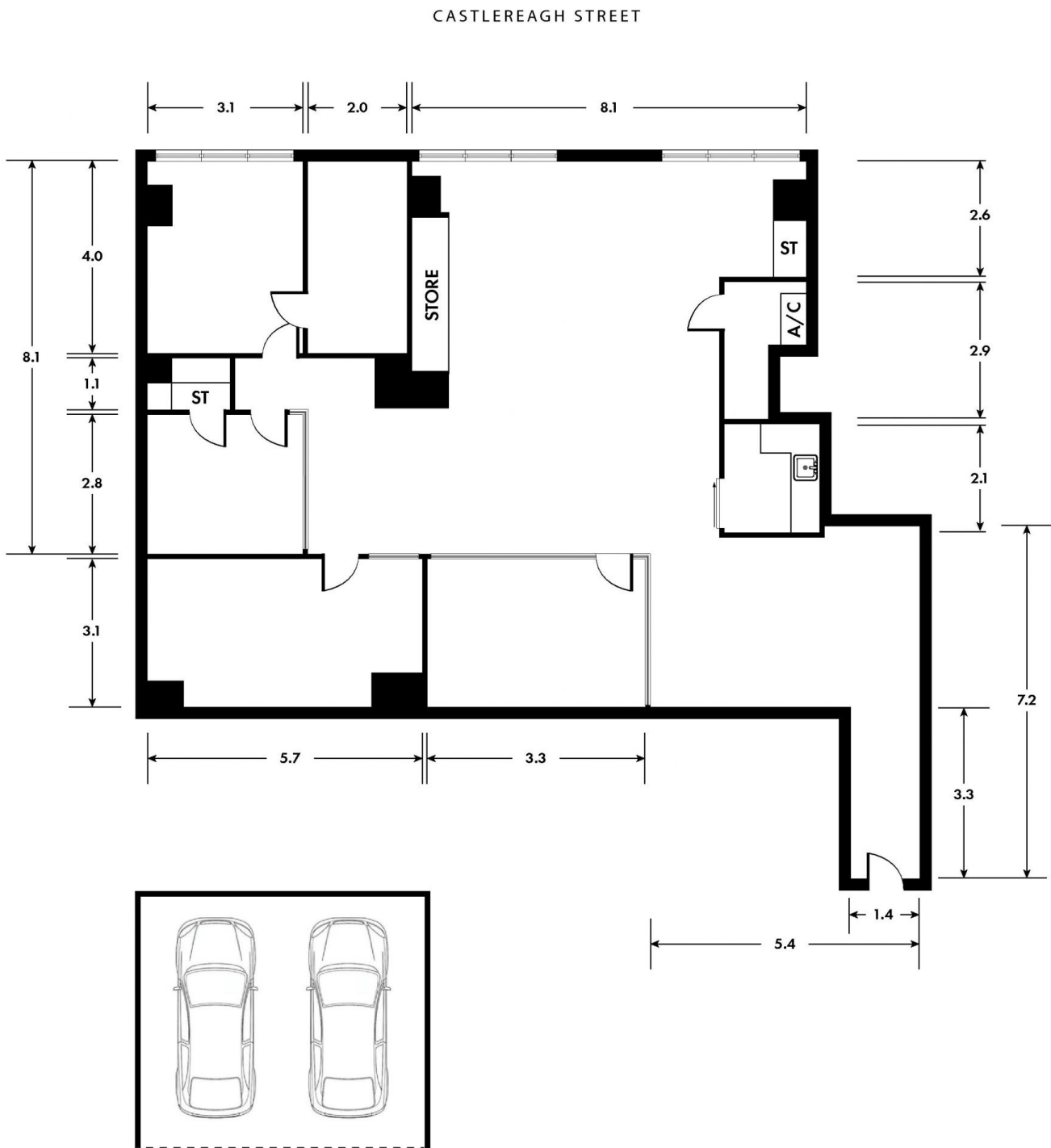
Internally the property features a stylish and comprehensive fitout incorporating a combination of executive offices or meeting rooms and a spacious open plan work area suitable for multiple workstations. The

**Price** : \$550/m2 Gross PA  
**Building Size** : 151 sqm  
**Land Size** : 151 sqm  
**View** : <https://www.noonanproperty.com.au/lease/nsw/sydney-city/sydney/commercial/offices/7949331>



**Tim Noonan**  
02 9231 6000

# SUITE 450, 311 CASTLEREAGH STREET SYDNEY



\*PLANS SHOWN ONLY INDICATIVE OF LAYOUT. DIMENSIONS ARE APPROXIMATE.

Floor plan supplied by V-Mark Design Pty Ltd. This floor plan is provided for indicative purposes only. Measurements are approximate and not to scale. The vendor, agency and supplier will accept no liability for its accuracy. Interested parties are advised to make their own independent enquiries.

**NOONAN**  
**PROPERTY**