



## 603/225 Clarence Street Sydney NSW

Noonan Property Sydney are pleased to present for sale Suite 603, 225 Clarence Street, Sydney via Expressions of Interest closing 3pm Tuesday, 30 April 2024.

This quality offering represents an exciting opportunity to acquire a modern commercial strata property comprising 152 sqm of internal office accommodation in a superb location near Wynyard, Town Hall, Queen Victoria Building, Hyde Park and Cockle Bay.

Suite 603 features high ceilings, prominent lift lobby exposure and large northeast facing windows providing excellent natural light together with expansive streetscape views overlooking Clarence Street.

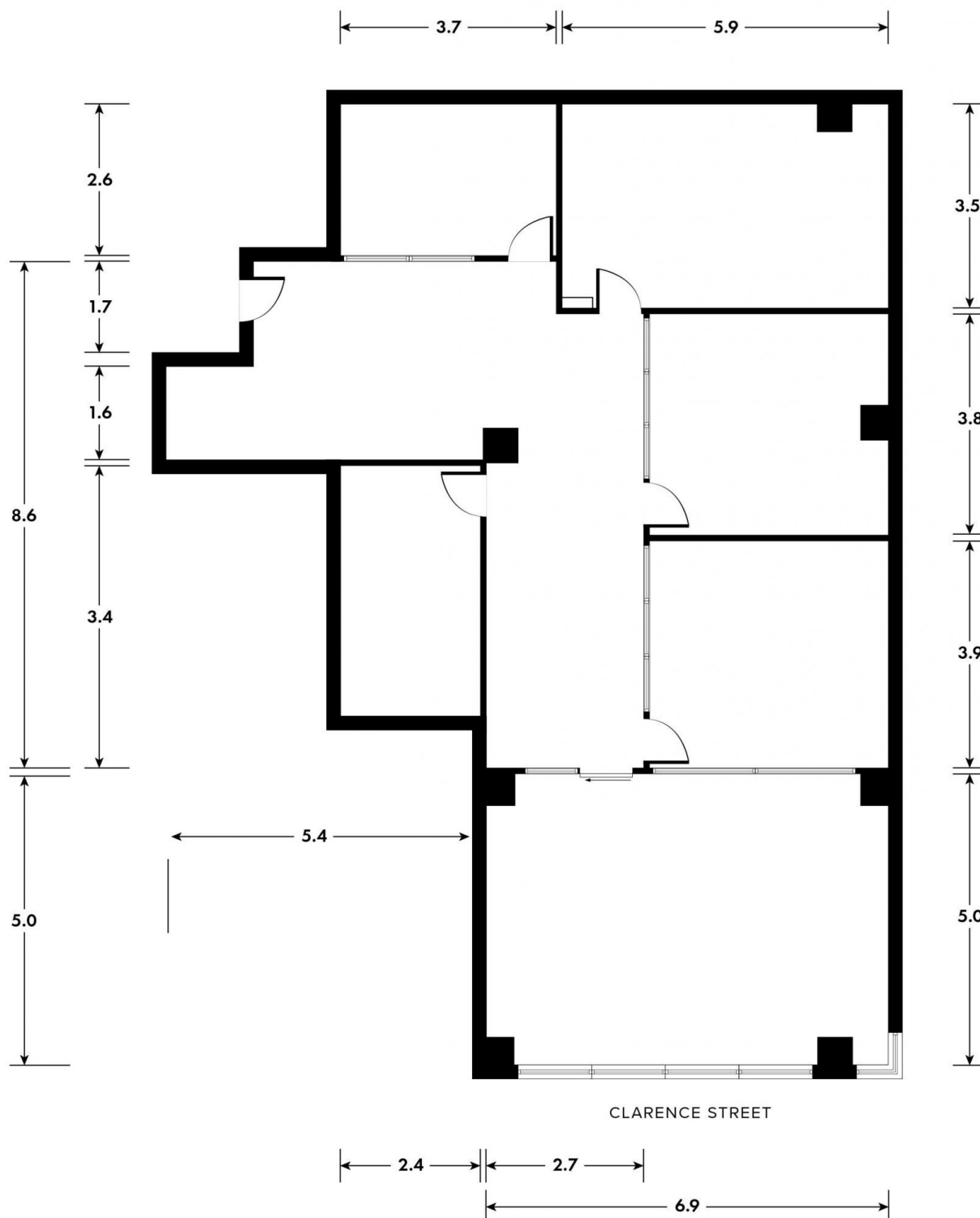
Internally the property features a stylish office fitout incorporating a spacious reception and client meeting area,

**Price** : Guide \$2,000,000  
**Building Size** : 152 sqm  
**Land Size** : 152 sqm  
**View** : <https://www.noonanproperty.com.au/sale/nsw/sydney-city/sydney/commercial/offices/7954005>



**Tim Noonan**  
02 9231 6000

# SUITE 603, 225 CLARENCE STREET SYDNEY



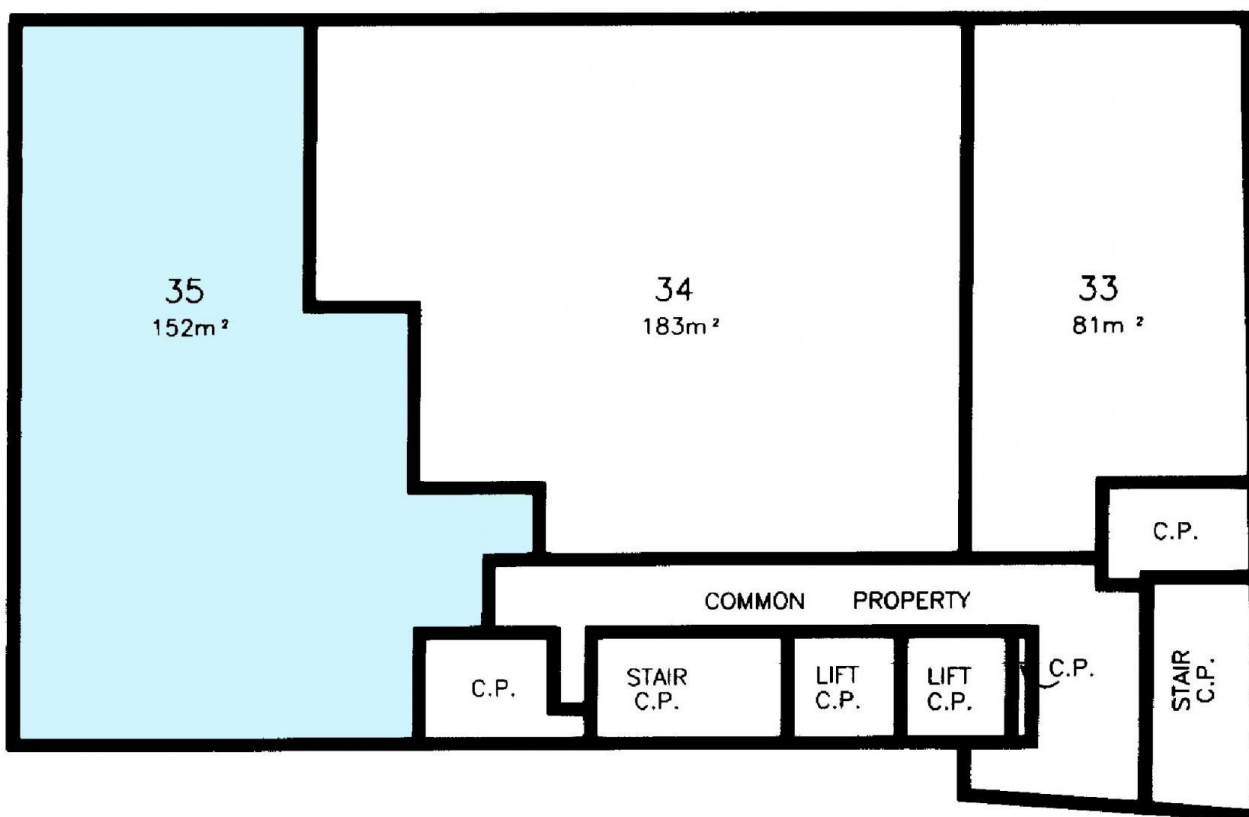
\*PLANS SHOWN ONLY INDICATIVE OF LAYOUT. DIMENSIONS ARE APPROXIMATE.  
Floor plan supplied by V-Mark Design Pty Ltd. This floor plan is provided for indicative purposes only. Measurements are approximate and not to scale. The vendor, agency and supplier will accept no liability for its accuracy. Interested parties are advised to make their own independent enquiries.

## NOONAN PROPERTY



LEVEL 6

CLARENCE STREET



\*PLANS SHOWN ONLY INDICATIVE OF LAYOUT. DIMENSIONS ARE APPROXIMATE.  
Floor plan supplied by V-Mark Design Pty Ltd. This floor plan is provided for indicative purposes only. Measurements are approximate and not to scale. The vendor, agency and supplier will accept no liability for its accuracy. Interested parties are advised to make their own independent enquiries.