



901/370 Pitt Street Sydney NSW

Noonan Property are pleased to offer for lease this modern and impressive commercial suite comprising 292 sqm in the prestigious Chambers building located at 370 Pitt Street, Sydney.

This premium offering is an exclusive opportunity to occupy an impressive office space with attractive city skyline views, three expansive window frontages, corner positioning and excellent natural light in a highly coveted location near Town Hall, Museum Station, Haymarket, World Square, Surry Hills and Hyde Park.

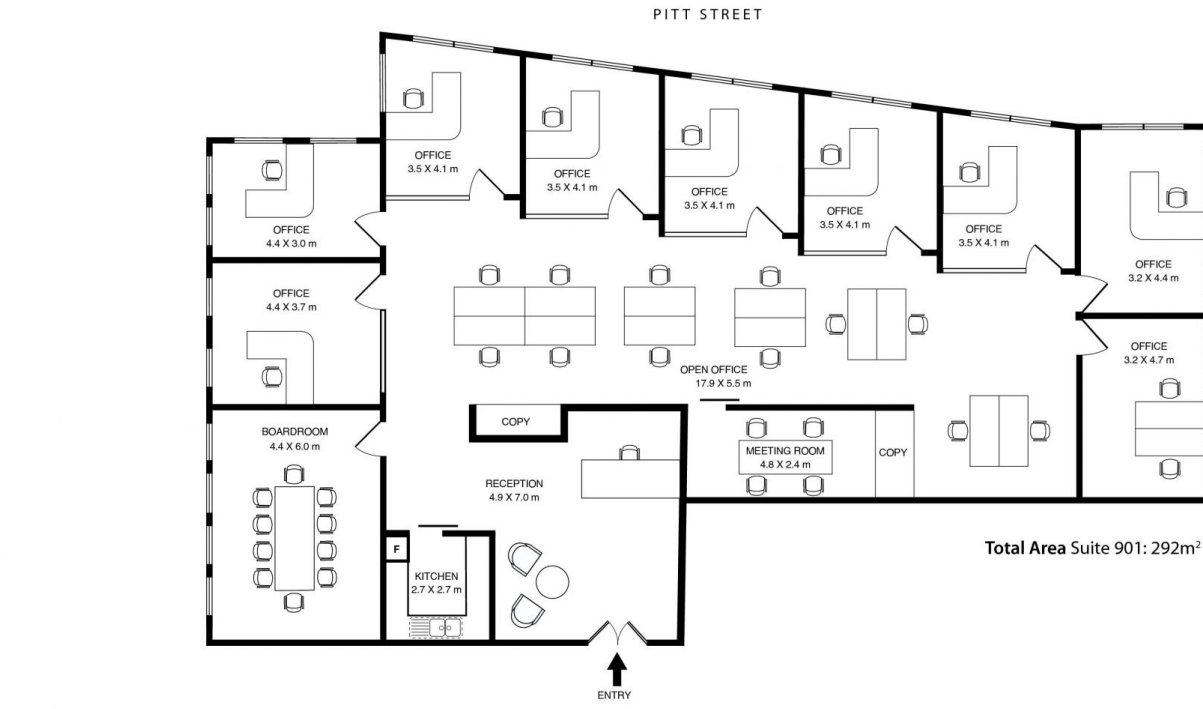
Internally the property has been stylishly designed for a legal business with a quality fitout featuring a combination of impressive meeting rooms, executive offices and open plan workspaces along with internal kitchen facilities and easy access to communal bathroom amenities.

Price : \$550/m2 Gross PA
Building Size : 292 sqm
Land Size : 292 sqm
View : <https://www.noonanproperty.com.au/lease/nsw/sydney-city/sydney/commercial/offices/7962786>



Tim Noonan
02 9231 6000

SUITE 901, 370 PITT STREET SYDNEY



0 1 2 3 4 5
SCALE (METRES)

*PLANS SHOWN ONLY INDICATIVE OF LAYOUT, DIMENSIONS ARE APPROXIMATE.
Floor plan supplied by V-Mark Design Pty Ltd. This floor plan is provided for indicative purposes only.
Measurements are approximate and not to scale. The vendor, agency and supplier will accept no liability
for its accuracy. Interested parties are advised to make their own independent enquiries.

NOONAN
PROPERTY