



1002/82 Elizabeth Street Sydney NSW

Noonan Property are pleased to offer for lease this high quality commercial office suite comprising 127 sqm in a prestigious location near Queen's Square, Hyde Park and the highly anticipated Martin Place Metro Station development, which is scheduled to open in 2024.

Suite 1002 features high rise positioning on Level 10, with dual window frontages, and excellent natural light by virtue of large windows with east facing views overlooking Elizabeth Street.

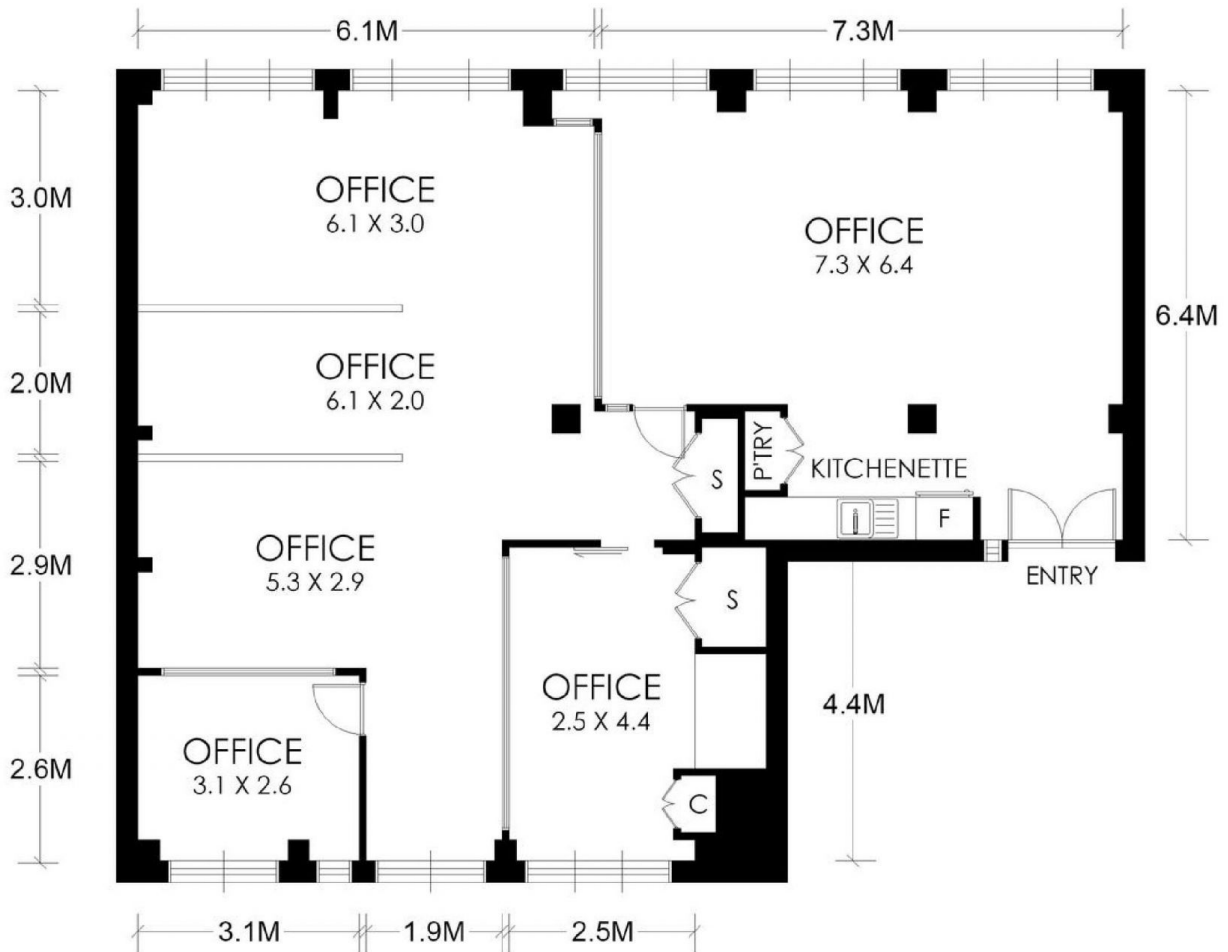
Internally the property features an impressive New York style reception and waiting area, combination of executive offices or meeting rooms, boardroom and a large open-plan work area suitable for multiple workstations. The property also includes integrated storage cupboards, internal kitchen facilities, 24 hour security access, ducted air conditioning,

Price : \$650/m2 Gross PA
Building Size : 127 sqm
Land Size : 127 sqm
View : <https://www.noonanproperty.com.au/lease/nsw/sydney-city/sydney/commercial/offices/7976785>



Tim Noonan
02 9231 6000

SUITE 1002, LEVEL 10 82 ELIZABETH STREET SYDNEY



*PLANS SHOWN ONLY INDICATIVE OF LAYOUT. DIMENSIONS ARE APPROXIMATE.
Floor plan supplied by V-Mark Design Pty Ltd. This floor plan is provided for indicative purposes only.
Measurements are approximate and not to scale. The vendor, agency and supplier will accept no liability
for its accuracy. Interested parties are advised to make their own independent enquiries.

NOONAN PROPERTY