

# NOONAN PROPERTY



## Level 4/82 Elizabeth Street Sydney NSW

Noonan Property are pleased to offer for lease this stylishly renovated and fully furnished whole floor commercial office comprising 215 sqm with excellent natural light in a prestigious location near Queen's Square, Hyde Park and Martin Place.

Level 4 features whole floor positioning and dual window frontages providing excellent natural light throughout the entire property along with attractive views overlooking Elizabeth Street.

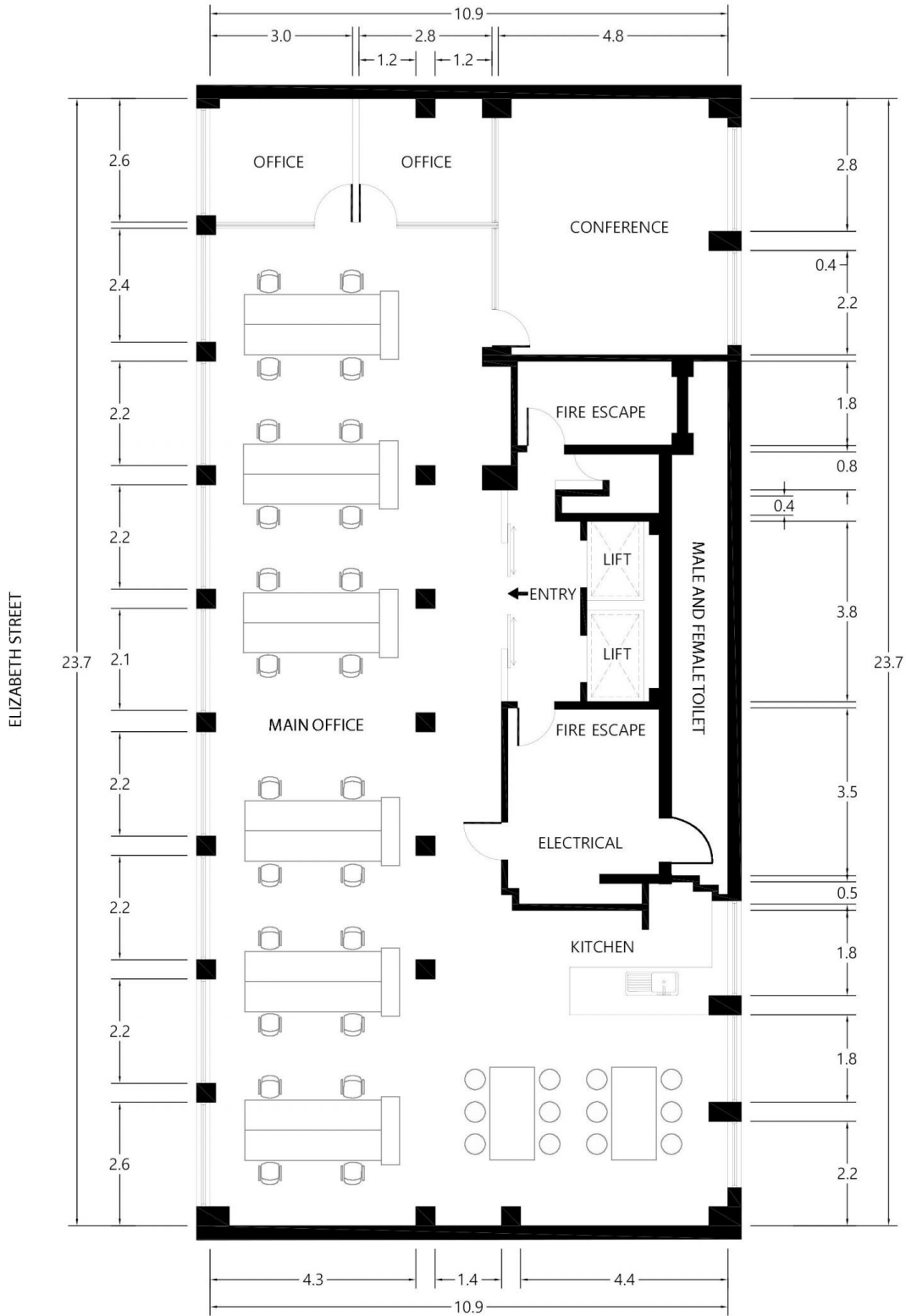
Internally the property features a stylish and comprehensive fitout incorporating a combination of executive offices or meeting rooms and a spacious open plan work area with multiple workstations. The property also includes a large staff breakout area, ducted air conditioning, established phone and data connectivity,

**Price** : \$690/m2 Gross PA  
**Building Size** : 215 sqm  
**Land Size** : 215 sqm  
**View** : <https://www.noonanproperty.com.au/lease/nsw/sydney-city/sydney/commercial/offices/7982327>



**Tim Noonan**  
02 9231 6000

# LEVEL 4 82 ELIZABETH STREET SYDNEY



\*PLANS SHOWN ONLY INDICATIVE OF LAYOUT. DIMENSIONS ARE APPROXIMATE.  
 Floor plan supplied by V-Mark Design Pty Ltd. This floor plan is provided for indicative purposes only.  
 Measurements are approximate and not to scale. The vendor, agency and supplier will accept no liability

**NOONAN  
PROPERTY**