



276 Pitt Street Sydney NSW

Noonan Property are pleased to present for sale Suites 1301-1303, McArdle Legal House, 276 Pitt Street, Sydney.

This premium offering provides owner occupiers and investors with a rare opportunity to acquire three adjoining commercial strata properties comprising 195 sqm in a prime location near Town Hall, Hyde Park, World Square and the highly anticipated Gadigal Station (formerly Pitt Street Metro Station) development, which is scheduled to open in 2024.

Suites 1301-1303 feature prime penthouse positioning, high ceilings, dual entranceways, internal kitchen amenities and large windows facing Pitt Street providing excellent natural light and expansive views overlooking the Anzac

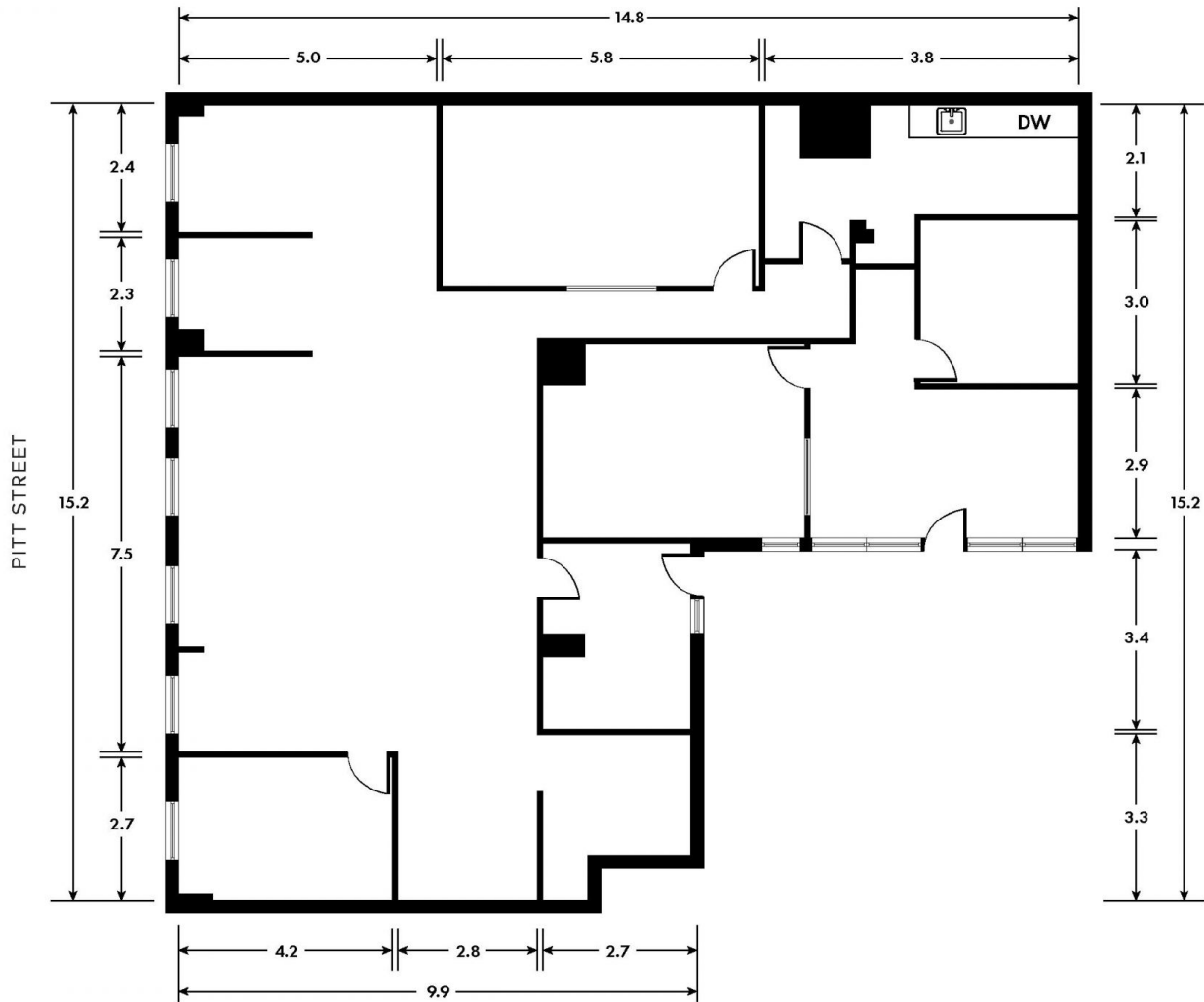
[For full version visit the website](https://www.noonanproperty.com.au/sale/nsw/sydney-city/sydney/commercial/offices/7995701)

Type	: Offices
Price	: Guide \$2,300,000
Building Size	: 195 sqm
Land Size	: 195 sqm
View	: https://www.noonanproperty.com.au/sale/nsw/sydney-city/sydney/commercial/offices/7995701



Tim Noonan
02 9231 6000

SUITES 1301 - 1303, LEVEL 13 276 PITT STREET SYDNEY



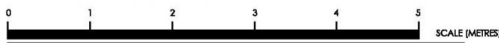
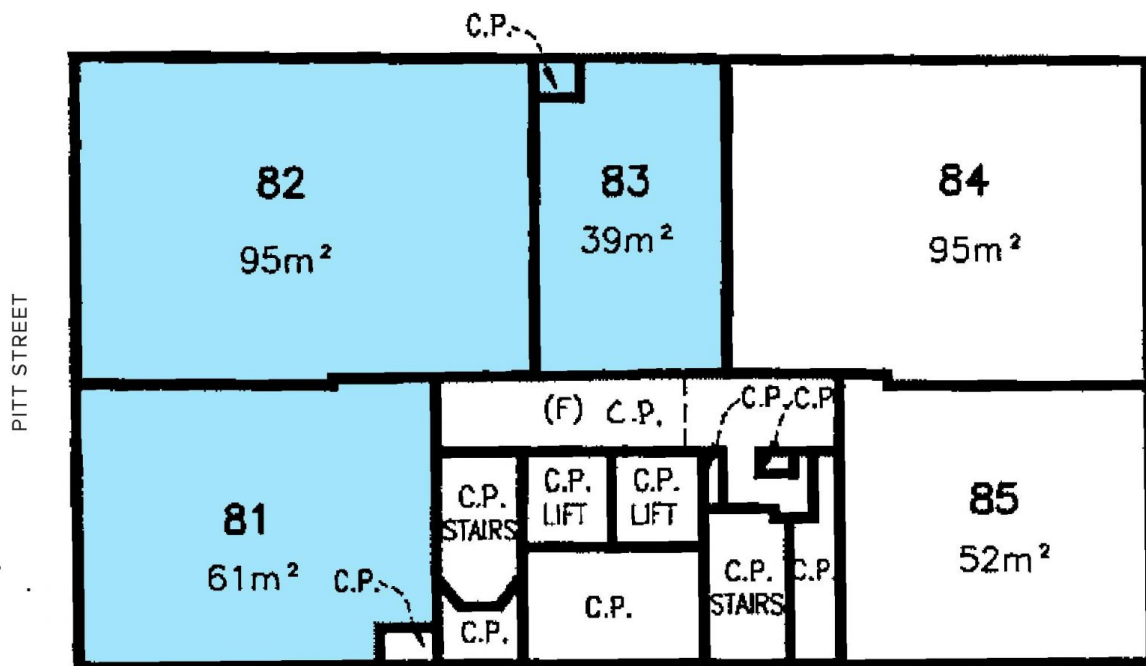
*PLANS SHOWN ONLY INDICATIVE OF LAYOUT. DIMENSIONS ARE APPROXIMATE.
Floor plan supplied by V-Mark Design Pty Ltd. This floor plan is provided for indicative purposes only.
Measurements are approximate and not to scale. The vendor, agency and supplier will accept no liability
for its accuracy. Interested parties are advised to make their own independent enquiries.

NOONAN
PROPERTY

SUITES 1301 - 1303, LEVEL 13 276 PITT STREET SYDNEY



LEVEL THIRTEEN



*PLANS SHOWN ONLY INDICATIVE OF LAYOUT. DIMENSIONS ARE APPROXIMATE.
Floor plan supplied by V-Mark Design Pty Ltd. This floor plan is provided for indicative purposes only.
Measurements are approximate and not to scale. The vendor, agency and supplier will accept no liability
for its accuracy. Interested parties are advised to make their own independent enquiries.

NOONAN
PROPERTY