



## 84 Pitt Street Sydney NSW

Noonan Property Sydney are pleased to offer for lease this spectacular retail or commercial space comprising 340 sqm with incredible positioning, presence and exposure to an endless volume of pedestrian traffic flow along Pitt Street.

This highly versatile property features an expansive street frontage, ground floor positioning, direct access to Pitt Street, ultra high ceilings and is situated in a highly coveted location between the intersections of Martin Place and Hunter Street. This prime location is convenient to transport infrastructure including the Sydney Metro Rail System at Martin Place and Hunter Street, Wynard, Martin Place and Circular Quay.

Internally the property is presented as a 'cold shell' and is

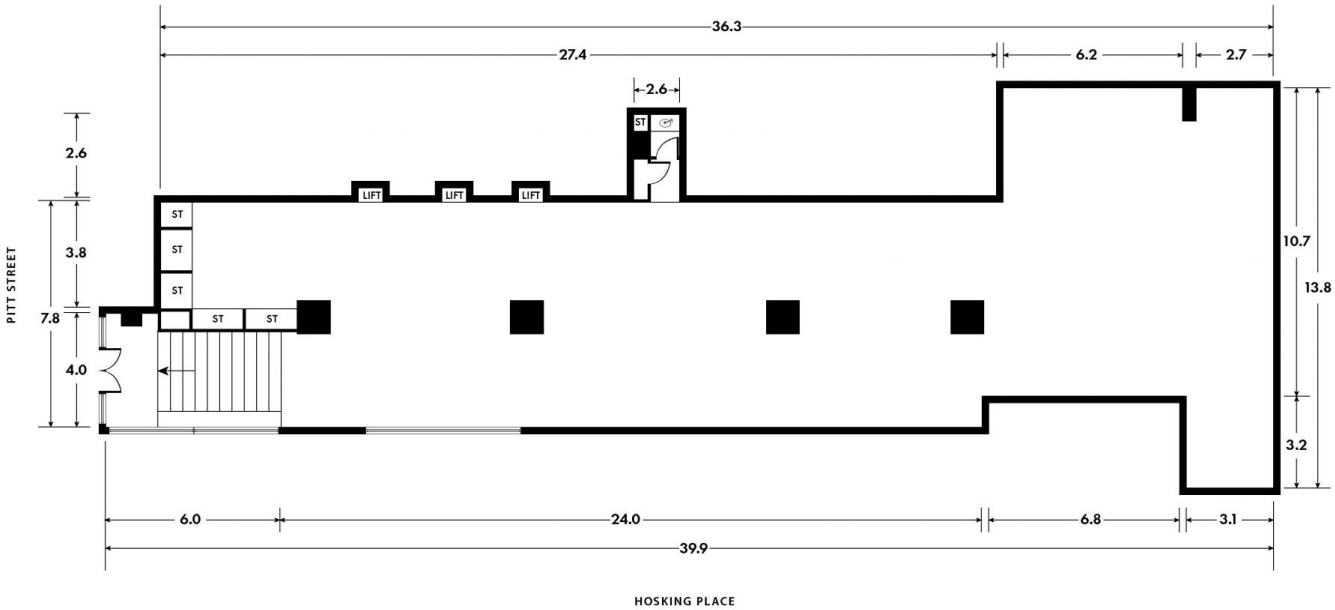
[For full version visit the website](https://www.noonanproperty.com.au)

<b>Type</b>	: Retail
<b>Price</b>	: \$1000/m2 Gross PA
<b>Building Size</b>	: 340 sqm
<b>Land Size</b>	: 340 sqm
<b>View</b>	: <a href="https://www.noonanproperty.com.au/lease/nsw/sydney-city/sydney/commercial/retail/8080479">https://www.noonanproperty.com.au/lease/nsw/sydney-city/sydney/commercial/retail/8080479</a>



**Tim Noonan**  
02 9231 6000

# RETAIL LOT 64, 84 PITT STREET SYDNEY



\*PLANS SHOWN ONLY INDICATIVE OF LAYOUT, DIMENSIONS ARE APPROXIMATE.  
Floor plan supplied by V-Mark Design Pty Ltd. This floor plan is provided for indicative purposes only. Measurements are approximate and not to scale. The vendor, agency and supplier will accept no liability for its accuracy. Interested parties are advised to make their own independent enquiries.

**NOONAN**  
PROPERTY