



206/50 Clarence Street Sydney NSW

Noonan Property are pleased to offer for lease this impressive commercial suite comprising 83 sqm in a highly coveted location near Wynyard Station.

This superbly located property features large windows overlooking York Lane, which provides good natural light throughout the entire premises.

Internally the property is presented freshly painted with new carpet tiles and LED lighting. The configuration includes a meeting room and a spacious open plan workspace. The property also features easy access to kitchen and bathroom amenities.

The Clarence is one of Sydney's most popular commercial

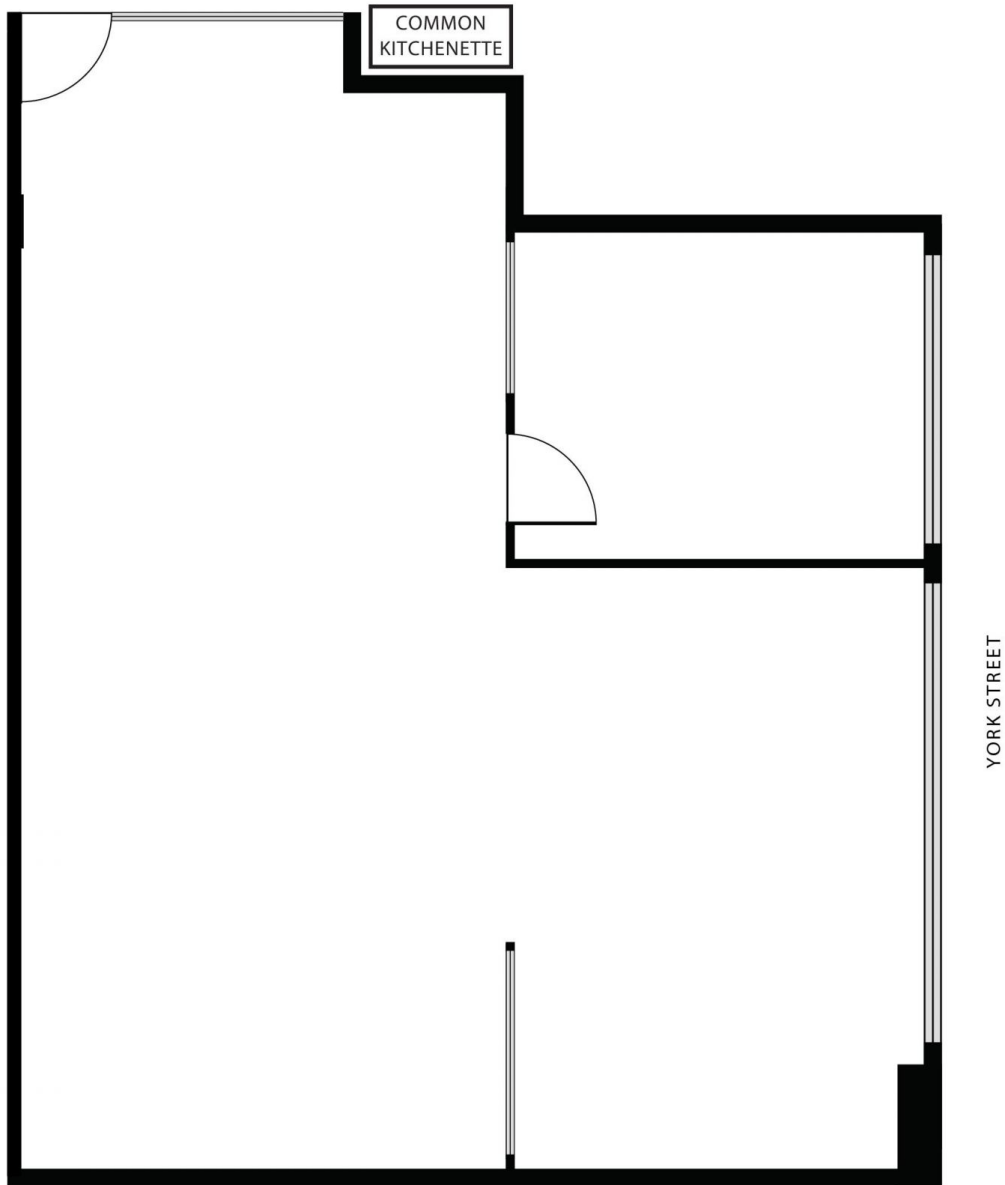
[For full version visit the website](#)

| | |
|----------------------|---|
| Type | : Offices |
| Building Size | : 83 sqm |
| Land Size | : 83 sqm |
| View | : https://www.noonanproperty.com.au/lease/nsw/sydney-city/sydney/commercial/offices/8081117 |



Tim Noonan
02 9231 6000

SUITE 206, 50 CLARENCE STREET SYDNEY



*PLANS SHOWN ONLY INDICATIVE OF LAYOUT. DIMENSIONS ARE APPROXIMATE.
Floor plan supplied by V-Mark Design Pty Ltd. This floor plan is provided for indicative purposes only.
Measurements are approximate and not to scale. The vendor, agency and supplier will accept no liability
for its accuracy. Interested parties are advised to make their own independent enquiries.

NOONAN
PROPERTY