

402/261 George Street Sydney NSW

Noonan Property are pleased to offer for lease this modern, bright and impressive commercial office suite comprising 122 sqm in a highly coveted location between Circular Quay and Wynyard.

This superbly located property features prime corner positioning and large windows overlooking George Street and Jamieson Street, providing expansive city views, Harbour Bridge glimpses and excellent natural light throughout the entire premises.

Internally the property features a versatile fitout incorporating an impressive reception and client meeting area, separate meeting rooms or executive offices, integrated storage and spacious open plan areas for

[For full version visit the website](https://www.noonanproperty.com.au/lease/nsw/sydney-city/sydney/commercial/offices/8144471)

Type : Offices
Building Size : 122 sqm
Land Size : 122 sqm
View : <https://www.noonanproperty.com.au/lease/nsw/sydney-city/sydney/commercial/offices/8144471>

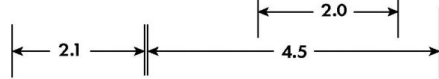
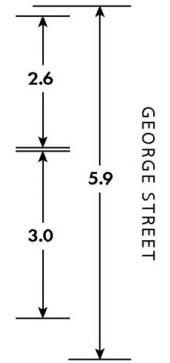
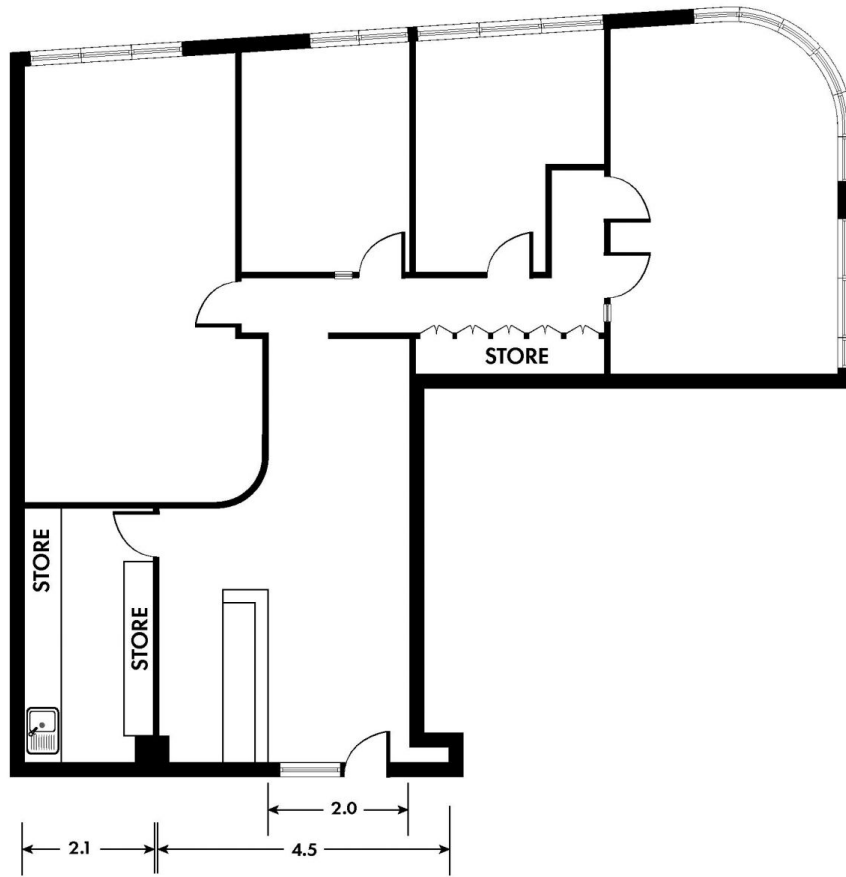
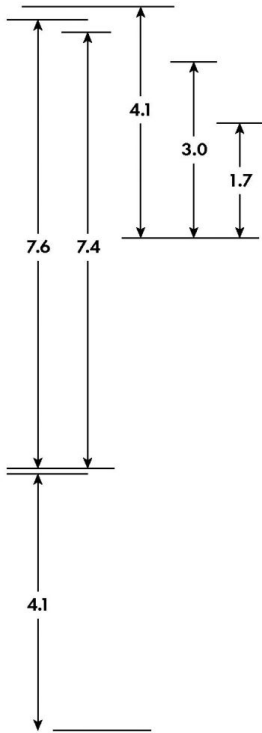
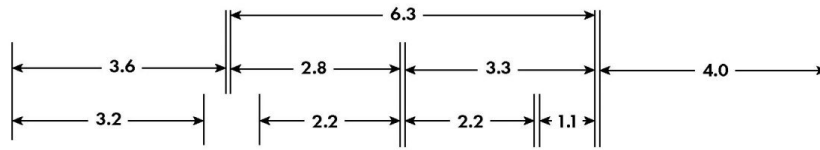


Tim Noonan
02 9231 6000

SUITE 402 LEVEL 4, 261 GEORGE STREET SYDNEY



JAMISON STREET



*PLANS SHOWN ONLY INDICATIVE OF LAYOUT. DIMENSIONS ARE APPROXIMATE.
Floor plan supplied by V-Mark Design Pty Ltd. This floor plan is provided for indicative purposes only. Measurements are approximate and not to scale. The vendor, agency and supplier will accept no liability for its accuracy. Interested parties are advised to make their own independent enquiries.

NOONAN
PROPERTY