



203-204/155 King Street Sydney NSW

Noonan Property are pleased to offer for lease this highly impressive commercial suite comprising 50 sqm in the esteemed Trust Building located at 155 King Street, Sydney.

This superbly located property features bespoke interiors, ultra high ceilings, pendant lighting, large windows, excellent natural light and attractive views overlooking Castlereagh Street and King Street.

Internally the property features a versatile fitout incorporating a spacious reception and client meeting area, separate meeting room and two executive offices suitable for multiple workstations. The property also features easy access to kitchen and bathroom amenities.

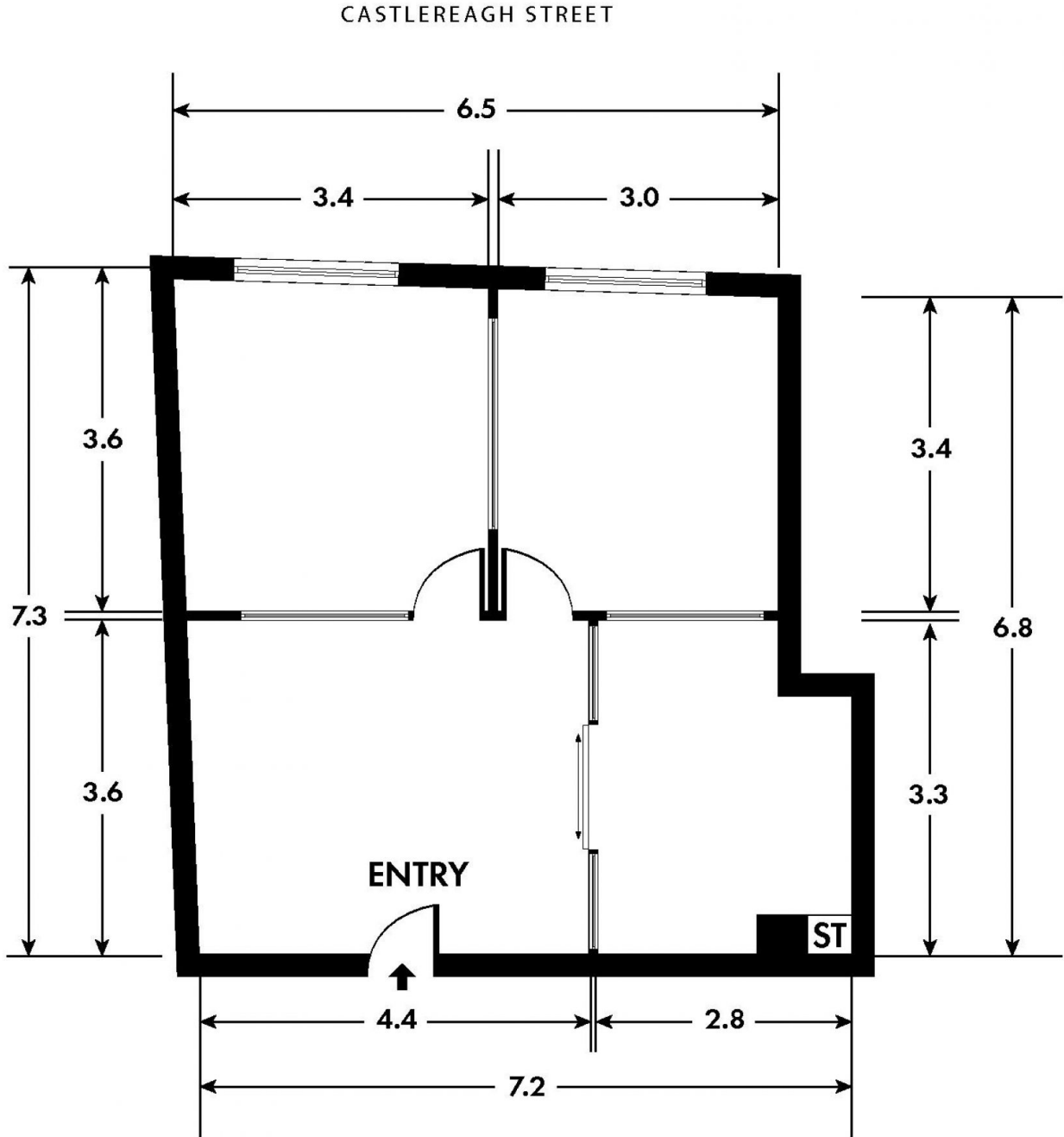
[For full version visit the website](https://www.noonanproperty.com.au/lease/nsw/sydney-city/sydney/commercial/offices/8201337)

Type	: Offices
Price	: \$800/m2 Gross PA
Building Size	: 50 sqm
Land Size	: 50 sqm
View	: https://www.noonanproperty.com.au/lease/nsw/sydney-city/sydney/commercial/offices/8201337



Tim Noonan
02 9231 6000

SUITE 203-204, 155 KING STREET SYDNEY



*PLANS SHOWN ONLY INDICATIVE OF LAYOUT. DIMENSIONS ARE APPROXIMATE.
Floor plan supplied by V-Mark Design Pty Ltd. This floor plan is provided for indicative purposes only. Measurements are approximate and not to scale. The vendor, agency and supplier will accept no liability for its accuracy. Interested parties are advised to make their own independent enquiries.

NOONAN
PROPERTY