



155 Castlereagh Street Sydney NSW

Noonan Property Sydney are pleased to present for sale 10/3B, 155 Castlereagh Street, Sydney. This is a fantastic opportunity to acquire a quality commercial office suite comprising 105 sqm in a prime location near Martin Place, Town Hall, Hyde Park, Pitt Street Mall and the newly developed Gadigal Metro Station.

Level 3 features floor to ceiling north facing windows, prominent lift lobby exposure, excellent natural light and attractive views overlooking Castlereagh Street. Internally Level 3 presents in modern condition with timber and tiled flooring, halogen downlighting and glass partitioning however, there is potential to add significant value by improving the property's fitout and configuration with innovative design features. Level 3 also includes ducted air

[For full version visit the website](#)

Type	: Offices
Price	: \$1,260,000 ONO
Building Size	: 105 sqm
Land Size	: 105 sqm
View	: https://www.noonanproperty.com.au/sale/nsw/sydney-city/sydney/commercial/offices/8201854

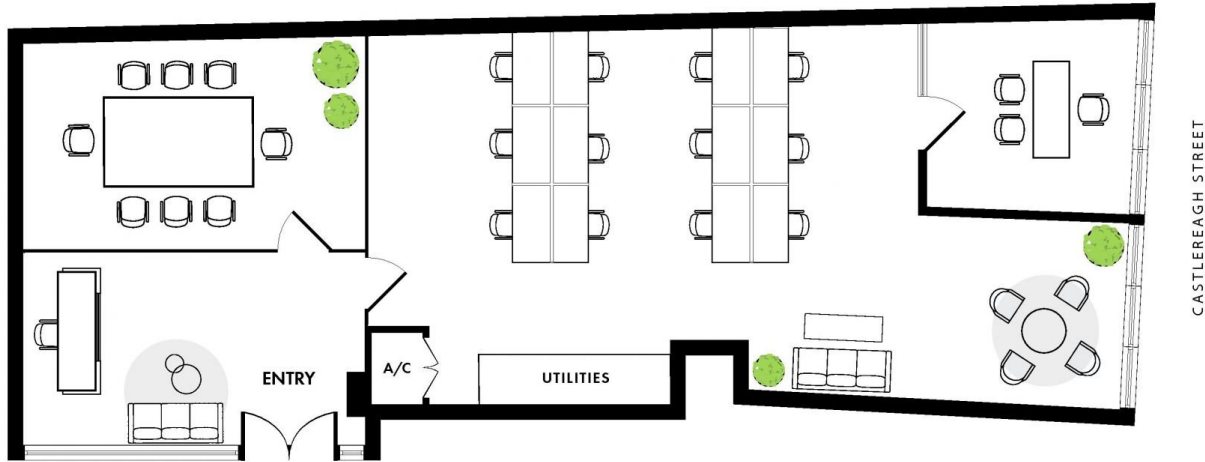


Tim Noonan
02 9231 6000

SUITE 10, LEVEL 3, 155 CASTLEREAGH STREET, SYDNEY



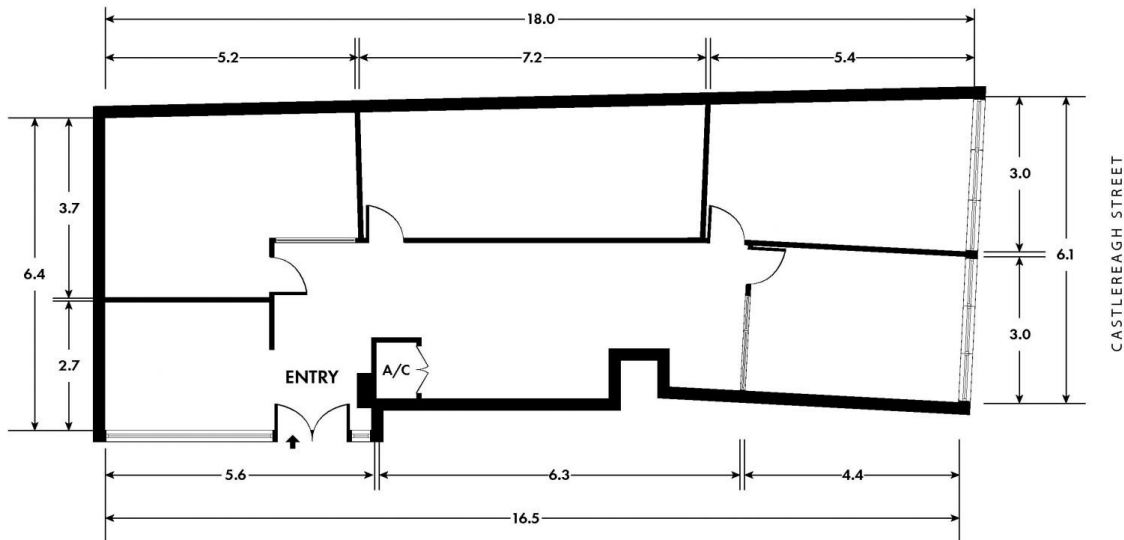
CONCEPT FITOUT DESIGN



*PLANS SHOWN ONLY INDICATIVE OF LAYOUT. DIMENSIONS ARE APPROXIMATE.
This floor plan is provided for indicative purposes only.
Measurements are approximate and not to scale. The vendor, agency and supplier will accept no liability for its accuracy. Interested parties are advised to make their own independent enquiries.

**NOONAN
PROPERTY**

SUITE 10, LEVEL 3, 155 CASTLEREAGH STREET, SYDNEY



*PLANS SHOWN ONLY INDICATIVE OF LAYOUT. DIMENSIONS ARE APPROXIMATE.
This floor plan is provided for indicative purposes only.
Measurements are approximate and not to scale. The vendor, agency and supplier will accept no liability for its accuracy. Interested parties are advised to make their own independent enquiries.

**NOONAN
PROPERTY**