



504/66 Hunter Street Sydney NSW

Noonan Property are pleased to offer for lease this stylish and modern office comprising 171 sqm in the highly prestigious City Mutual Building located opposite the entranceway to the newly opened Martin Place Metro Station.

This superbly located property features a quality fitout with modern interiors, high ceilings, pendant lighting and attractive views overlooking Hunter Street, Castlereagh Street, Elizabeth Street and the new Martin Place Metro Station.

Internally the property features a stylish fitout incorporating a reception and client meeting area, three boardrooms or executive offices with bifold walls, integrated storage and a

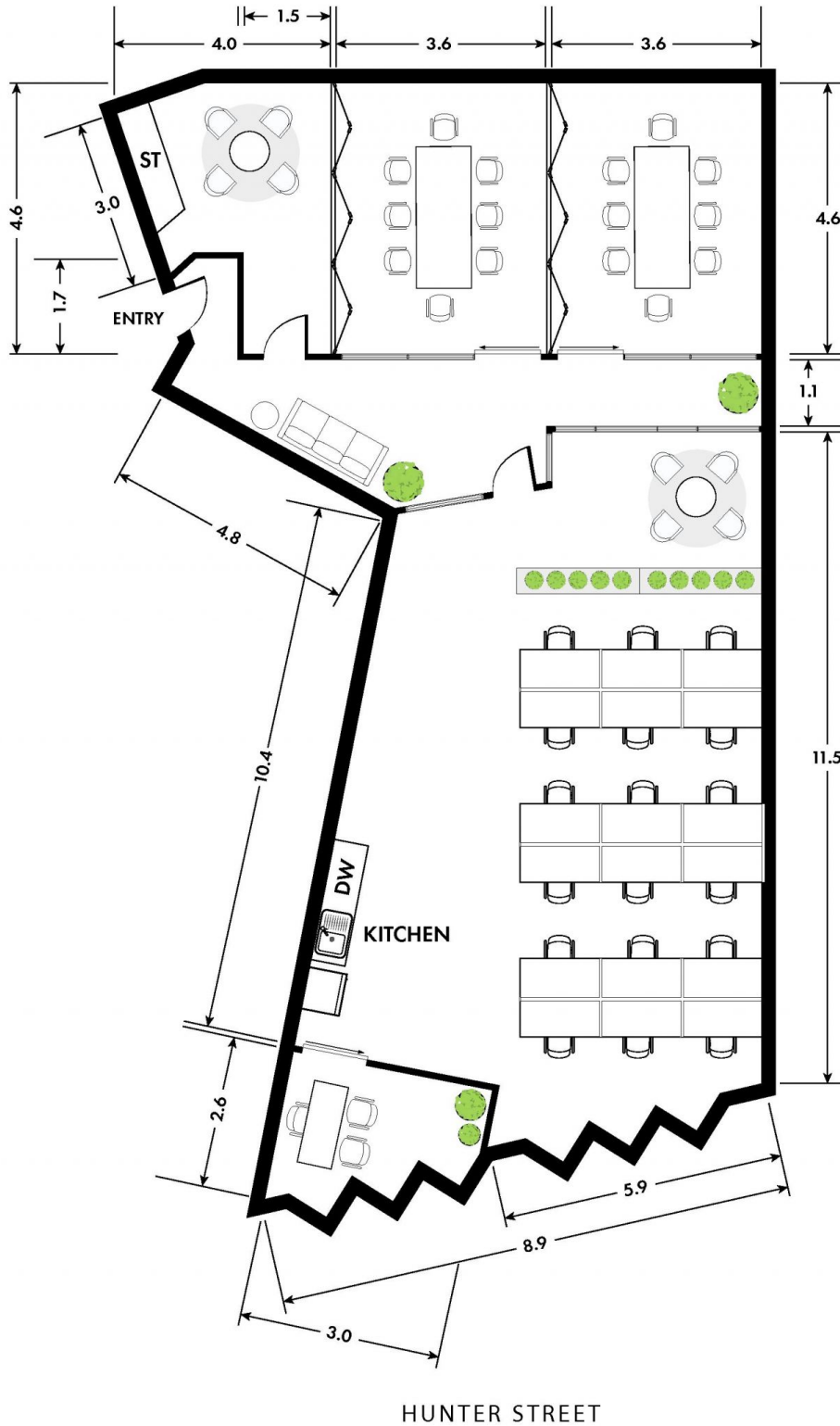
[For full version visit the website](https://www.noonanproperty.com.au/lease/nsw/sydney-city/sydney/commercial/offices/8237468)

Type	: Offices
Price	: \$850/m2 Gross PA
Building Size	: 171 sqm
Land Size	: 171 sqm
View	: https://www.noonanproperty.com.au/lease/nsw/sydney-city/sydney/commercial/offices/8237468



Tim Noonan
02 9231 6000

SUITE 504, 66 HUNTER STREET SYDNEY



*PLANS SHOWN ONLY INDICATIVE OF LAYOUT. DIMENSIONS ARE APPROXIMATE.

This floor plan is provided for indicative purposes only. Measurements are approximate and not to scale. The vendor, agency and supplier will accept no liability for its accuracy. Interested parties are advised to make their own independent enquiries.

NOONAN
PROPERTY