

Level 10/263 Clarence Street Sydney NSW

Noonan Property Sydney are pleased to present for sale Level 10, 263 Clarence Street, Sydney. This premium offering represents an exciting opportunity to acquire one of Sydney's most impressive whole floor commercial properties comprising 400 sqm in an ideal location near Town Hall Station, Queen Victoria Building, Darling Harbour, Hyde Park, Barangaroo and Haymarket.

Level 10 features an impressive fitout, high ceilings, halogen downlighting, timber flooring, full height glass partitioning, sub-penthouse whole floor positioning and an expansive east facing window frontage providing excellent natural light along with attractive streetscape views overlooking Clarence Street.

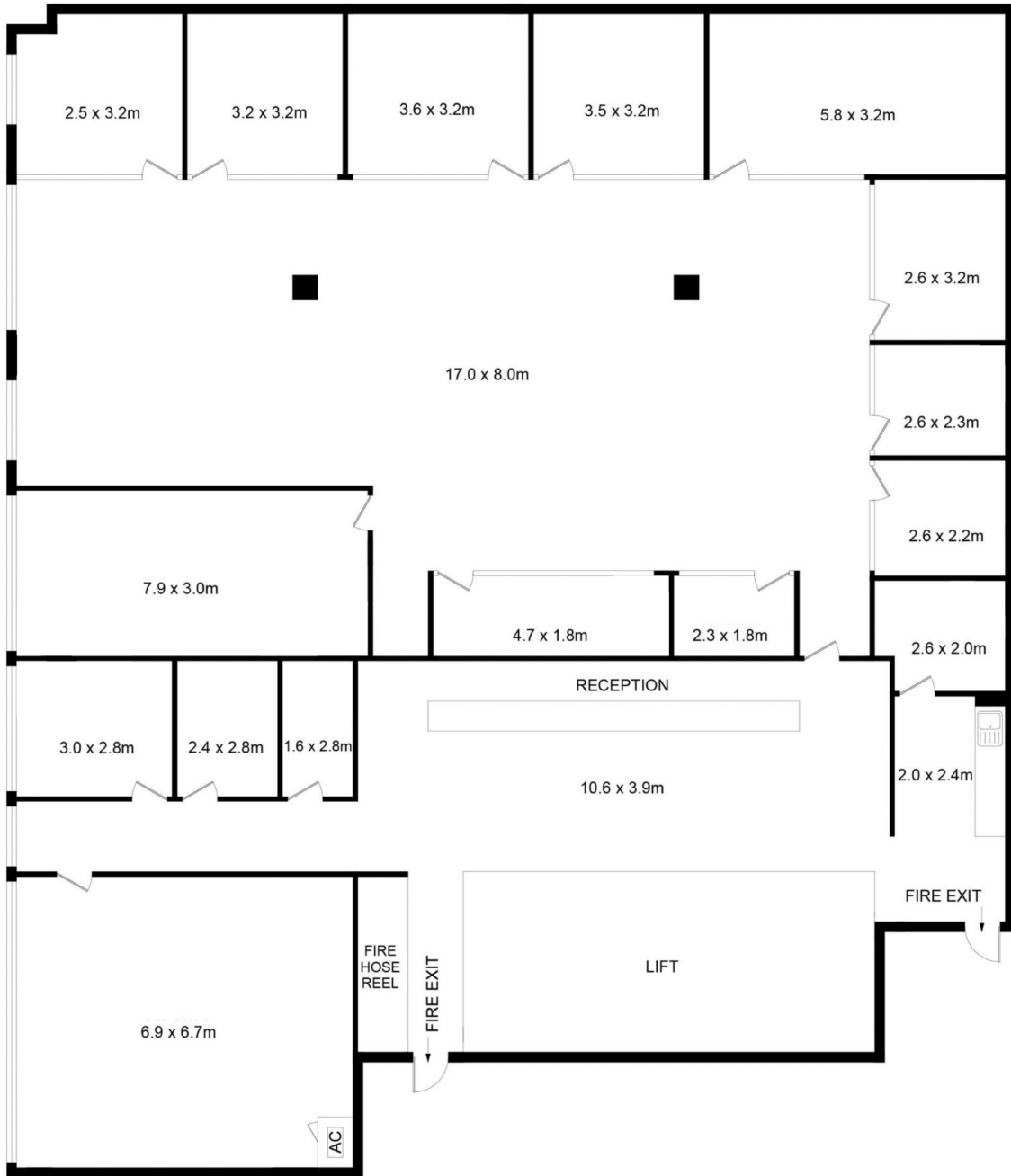
[For full version visit the website](#)

Type	: Offices
Price	: Guide \$4,500,000
Building Size	: 400 sqm
Land Size	: 400 sqm
View	: https://www.noonanproperty.com.au/sale/nsw/sydney-city/sydney/commercial/offices/8259010



Tim Noonan
02 9231 6000

LEVEL 10, 263 CLARENCE STREET SYDNEY



*PLANS SHOWN ONLY INDICATIVE OF LAYOUT. DIMENSIONS ARE APPROXIMATE.
This floor plan is provided for indicative purposes only.
Measurements are approximate and not to scale. The vendor, agency and supplier will accept no liability for its accuracy. Interested parties are advised to make their own independent enquiries.

NOONAN
PROPERTY