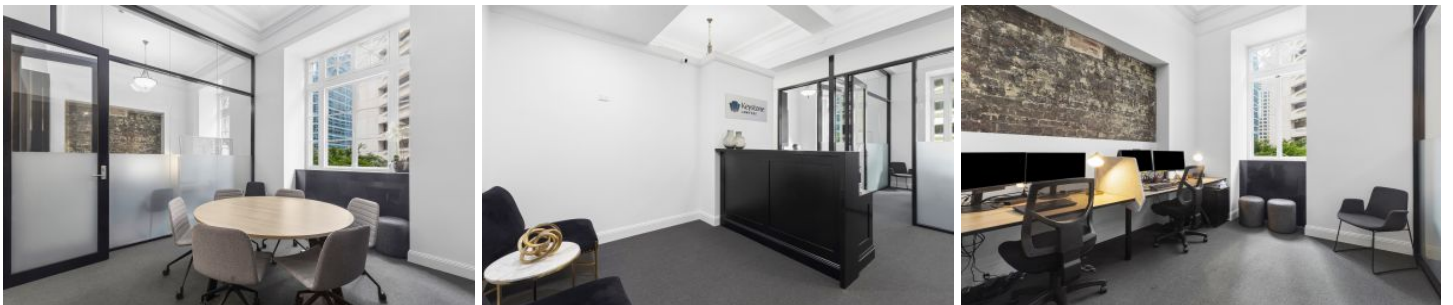


# NOONAN PROPERTY



## 36/64 Castlereagh Street Sydney NSW

Noonan Property Sydney are pleased to present for lease Suite 36, Castlereagh Chambers, 64 Castlereagh Street, Sydney. This exclusive property represents an exciting opportunity to occupy a boutique commercial suite comprising 63 sqm in one of Sydney's most prized commercial buildings with world famous neighbours including Bulgari at ground level, Hermes, Dior, Valentino, Chanel, Paspaley and Cartier.

Suite 36 features front positioning on Level 2, internal bathroom and kitchen amenities, ultra-high ornate ceilings, security intercom access, an efficient floor plan and two large windows overlooking King Street and Castlereagh Street providing excellent natural light and impressive views across to the MLC Centre.

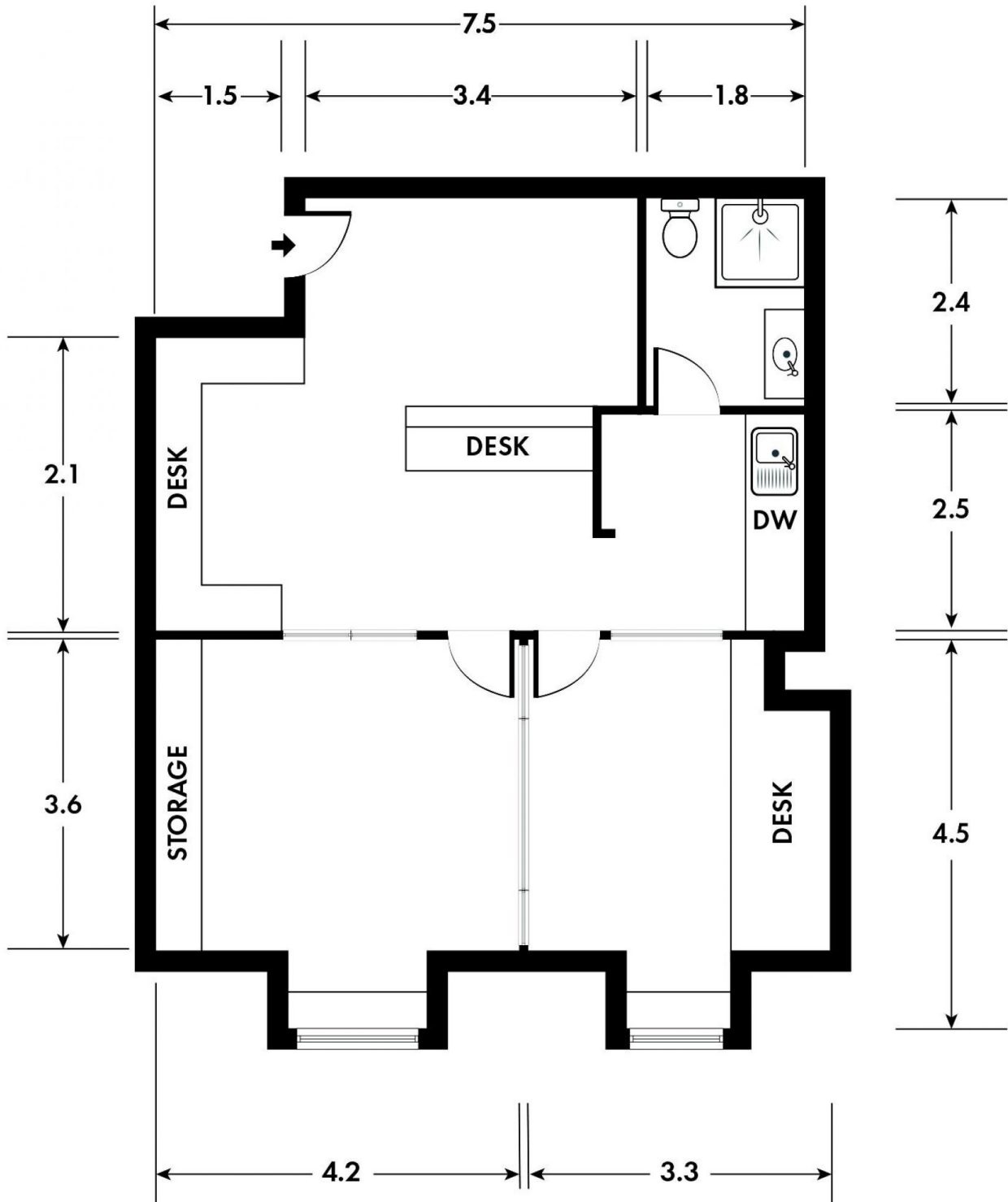
[For full version visit the website](#)

<b>Type</b>	: Offices
<b>Building Size</b>	: 63 sqm
<b>Land Size</b>	: 63 sqm
<b>View</b>	: <a href="https://www.noonanproperty.com.au/lease/nsw/sydney-city/sydney/commercial/offices/8264114">https://www.noonanproperty.com.au/lease/nsw/sydney-city/sydney/commercial/offices/8264114</a>



**Tim Noonan**  
02 9231 6000

# SUITE 36, 64 CASTLEREAGH STREET SYDNEY



\*PLANS SHOWN ONLY INDICATIVE OF LAYOUT. DIMENSIONS ARE APPROXIMATE.  
Floor plan supplied by V-Mark Design Pty Ltd. This floor plan is provided for indicative purposes only. Measurements are approximate and not to scale. The vendor, agency and supplier will accept no liability for its accuracy. Interested parties are advised to make their own independent enquiries.

**NOONAN**  
**PROPERTY**