



60 York Street Sydney NSW

Noonan Property are pleased to offer for lease this stylish and prestigious commercial suite comprising 215 sqm in a high quality commercial building located at 60 York Street, Sydney.

This superbly located property features bespoke interiors including tallow and blackbutt timber flooring, limestone clad columns, ozone glass partitioning, halogen downlighting, high ceilings, full building front positioning, large windows, excellent natural light, prominent lift lobby exposure and attractive views overlooking York Street.

Internally the property features a stylish and comprehensive fitout, designed by globally renowned Blainey North Interior Architecture. The office layout

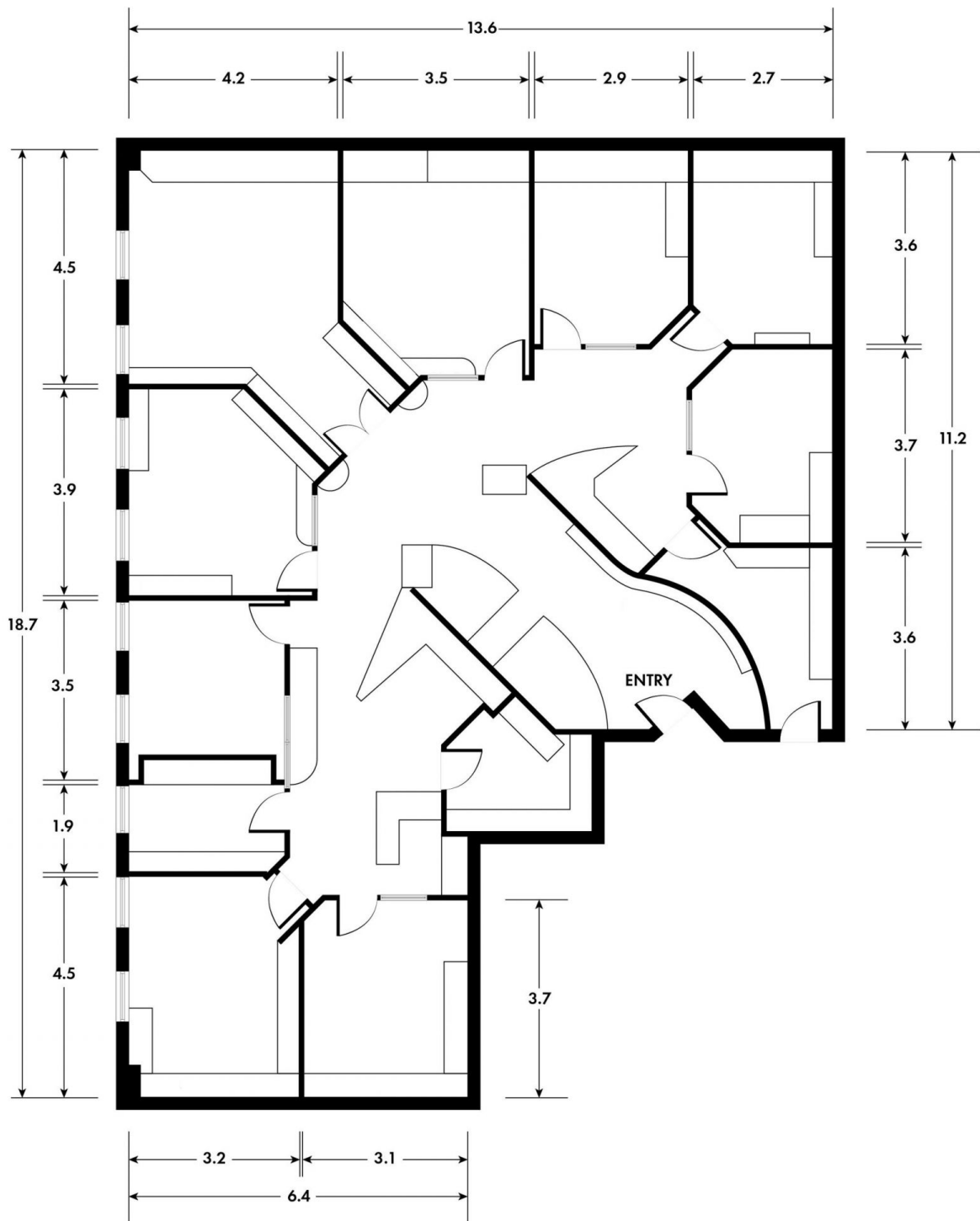
[For full version visit the website](https://www.noonanproperty.com.au/lease/nsw/sydney-city/sydney/commercial/offices/8277958)

Type	: Offices
Price	: \$750/m2 Net PA
Building Size	: 215 sqm
Land Size	: 215 sqm
View	: https://www.noonanproperty.com.au/lease/nsw/sydney-city/sydney/commercial/offices/8277958



Tim Noonan
02 9231 6000

SUITE 1001, 60 YORK STREET, SYDNEY



*PLANS SHOWN ONLY INDICATIVE OF LAYOUT. DIMENSIONS ARE APPROXIMATE.
This floor plan is provided for indicative purposes only.
Measurements are approximate and not to scale. The vendor, agency and supplier will accept no liability for its accuracy. Interested parties are advised to make their own independent enquiries.

NOONAN PROPERTY