



15A/123 Clarence Street Sydney NSW

Noonan Property are pleased to offer for lease this stylish commercial suite comprising 130 sqm in a perfectly located commercial building near Wynyard, Martin Place and Barangaroo. This quality office space features modern interiors, high ceilings, large windows, prominent lift lobby exposure and good natural light with attractive views overlooking Clarence Street.

Internally the property features a stylish and comprehensive fitout incorporating a spacious reception and client waiting area, 4 executive offices or meeting rooms and open plan space for multiple workstations. The property also features ducted air conditioning, integrated storage, internal kitchen amenities, internal shower facilities and easy access to communal bathroom amenities.

[For full version visit the website](https://www.noonanproperty.com.au/lease/nsw/sydney-city/sydney/commercial/offices/8354222)

Type	: Offices
Price	: \$500/m2 Gross PA
Building Size	: 130 sqm
Land Size	: 130 sqm
View	: https://www.noonanproperty.com.au/lease/nsw/sydney-city/sydney/commercial/offices/8354222

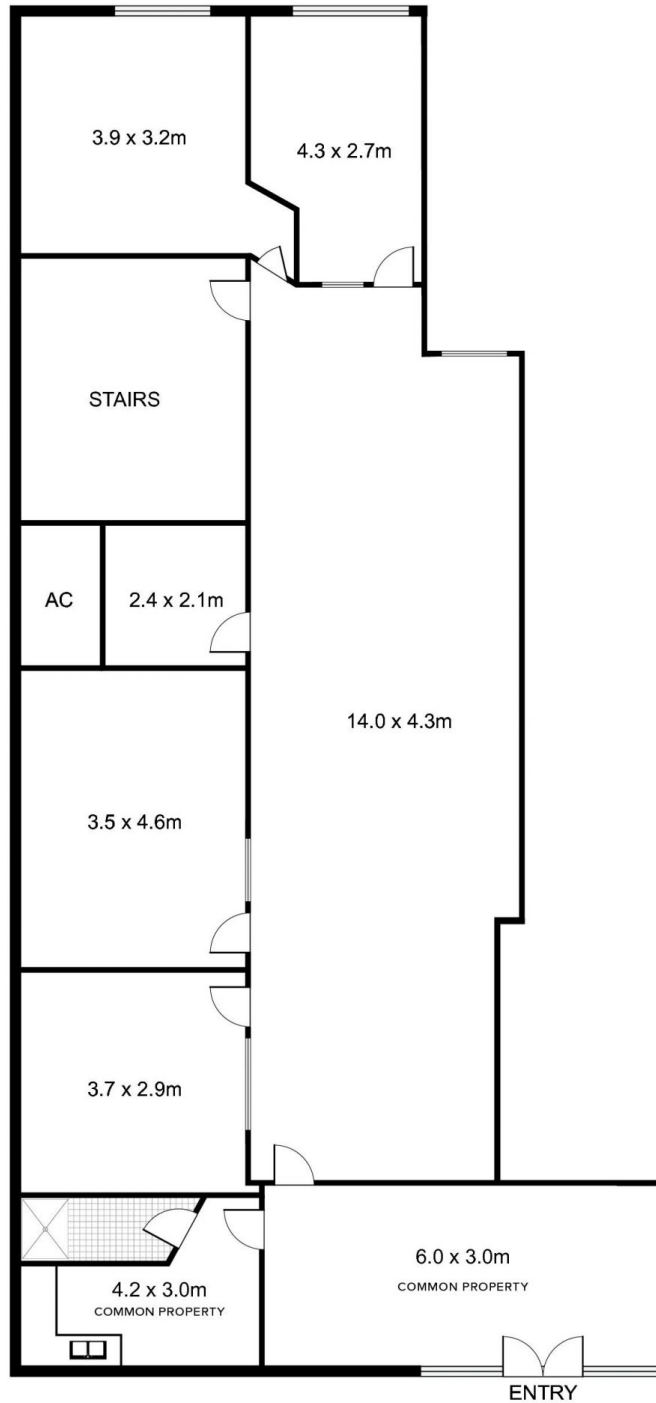


Tim Noonan
0416 286 129

LEVEL 2, 123 CLARENCE STREET SYDNEY



CLARENCE STREET



*PLANS SHOWN ONLY INDICATIVE OF LAYOUT. DIMENSIONS ARE APPROXIMATE.
This floor plan is provided for indicative purposes only.
Measurements are approximate and not to scale. The vendor, agency and supplier will accept no liability for its accuracy. Interested parties are advised to make their own independent enquiries.

NOONAN
PROPERTY