



15B/123 Clarence Street Sydney NSW

Noonan Property are pleased to offer for lease this stylish commercial suite comprising 172 sqm in a perfectly located commercial building near Wynard, Martin Place and Barangaroo. This quality office space features modern interiors, high ceilings, large windows, prominent lift lobby exposure and good natural light with attractive views overlooking Clarence Street.

Internally the property features a stylish and comprehensive fitout incorporating a spacious reception and client waiting area, boardroom, 4 executive offices or additional meeting rooms and open plan space for multiple workstations. The property also features ducted air conditioning, integrated storage, internal kitchen amenities, internal shower facilities and easy access to communal

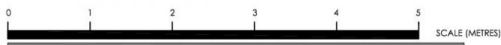
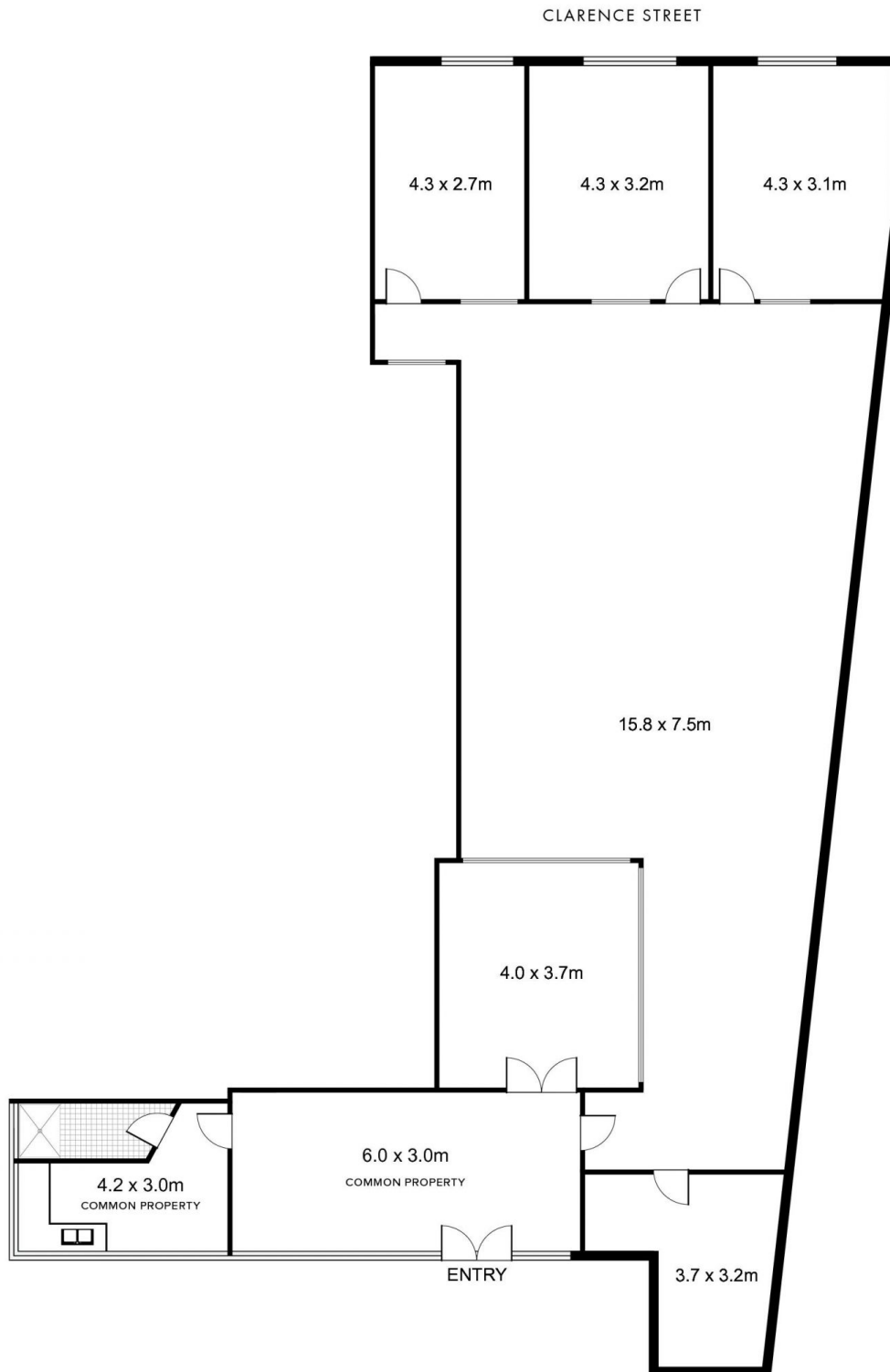
Type	: Offices
Price	: \$500/m2 Gross PA
Building Size	: 172 sqm
Land Size	: 172 sqm
View	: https://www.noonanproperty.com.au/lease/nsw/sydney-city/sydney/commercial/offices/8354237



Tim Noonan
0416 286 129

[For full version visit the website](https://www.noonanproperty.com.au)

LEVEL 2, 123 CLARENCE STREET SYDNEY



*PLANS SHOWN ONLY INDICATIVE OF LAYOUT. DIMENSIONS ARE APPROXIMATE.
This floor plan is provided for indicative purposes only.
Measurements are approximate and not to scale. The vendor, agency and supplier will accept no liability for its accuracy. Interested parties are advised to make their own independent enquiries.

NOONAN
PROPERTY